



DA0122003

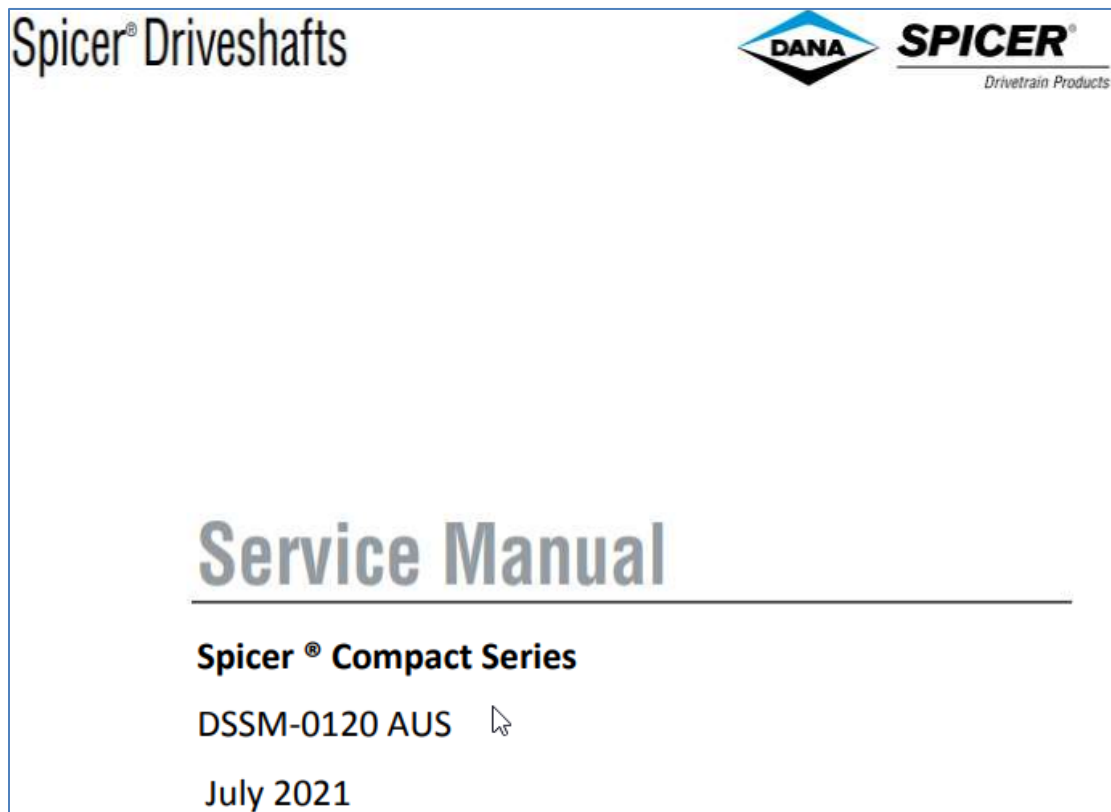
DSSM-0120 SUPPLEMENT

DATE: 12/01/2022

For Drive Shafts: Compact / SD Series

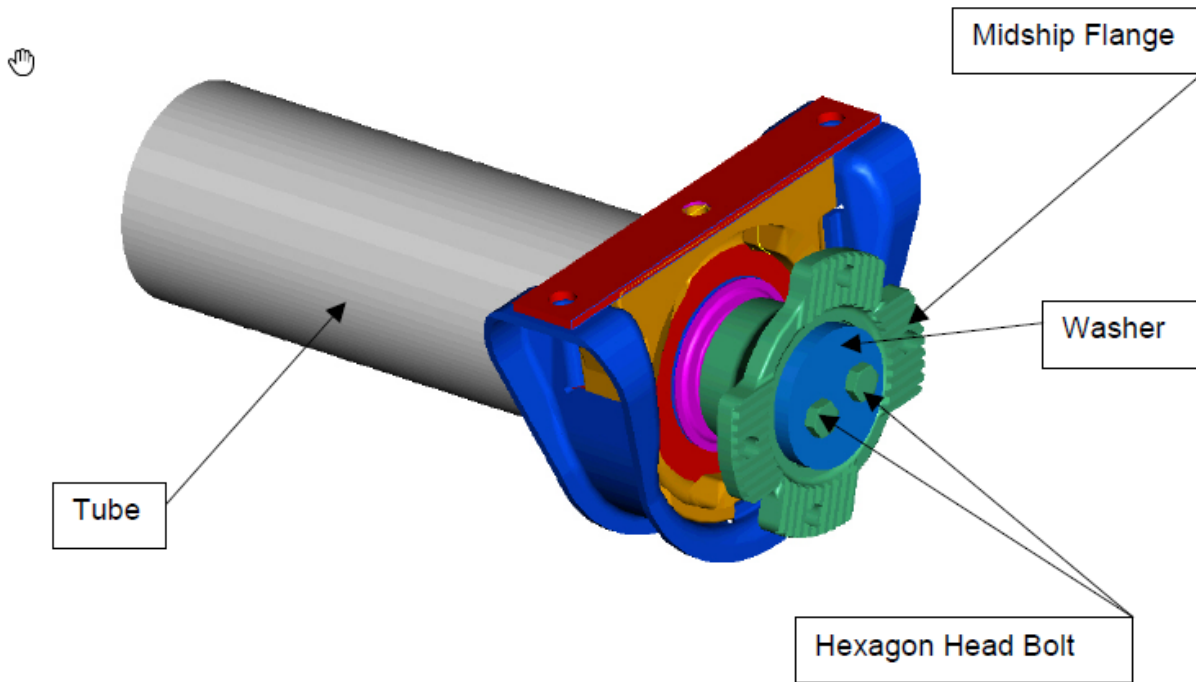
Midship Flange and C/Bearing Disassembly and Assembly

Please use this SUPPLEMENT together with the Spicer Driveshaft Service Manual (see below).

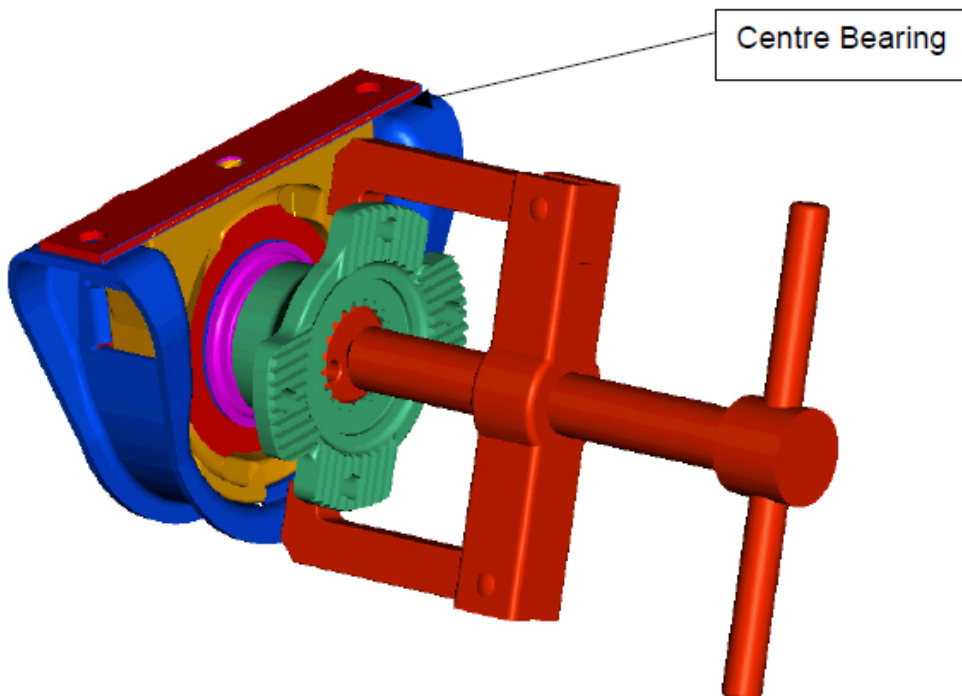


1. Disassembly

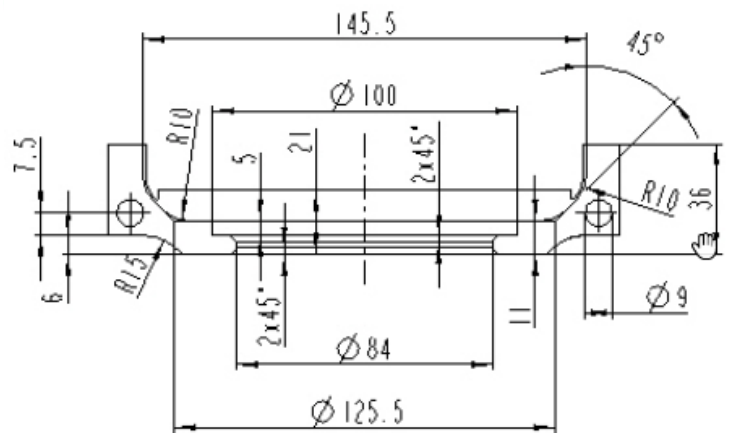
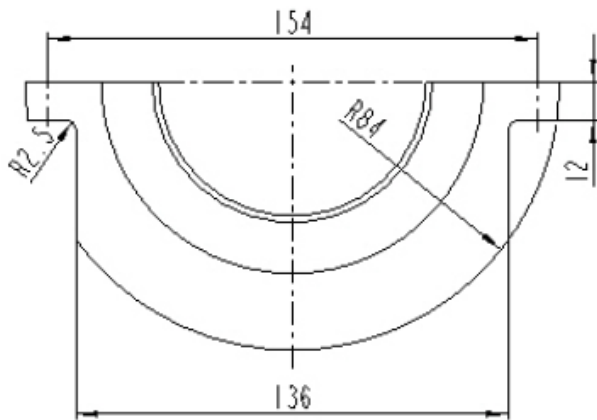
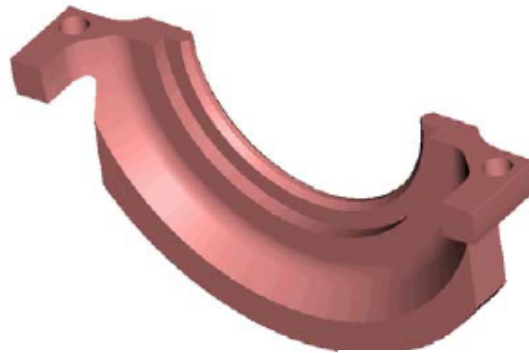
Mark the original position of the midship flange in relation to the tube.



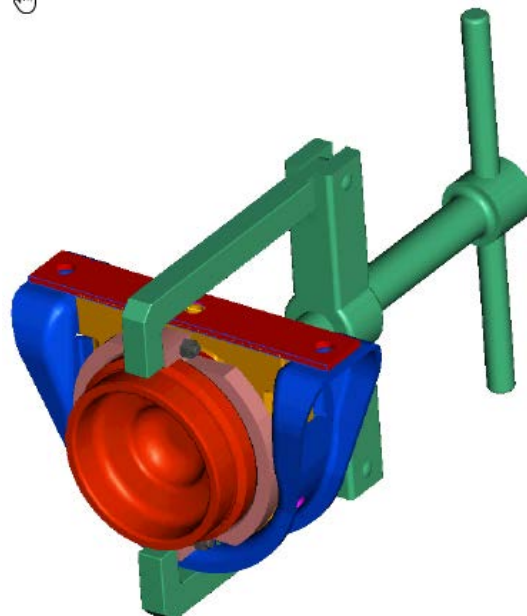
Unscrew the hexagon head bolts M12 with a suitable tool
Take off the midship flange from the midship stub shaft.



To take off the Centre Bearing $\varnothing 70$ two disassembly halfrings are necessary .



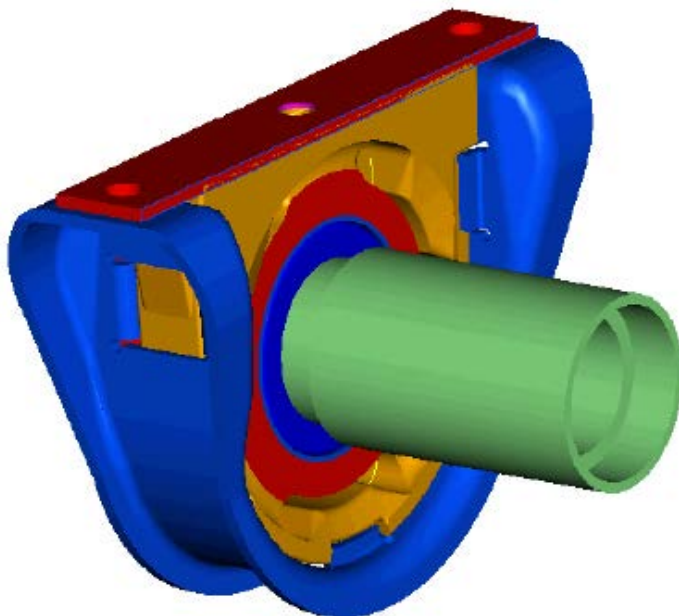
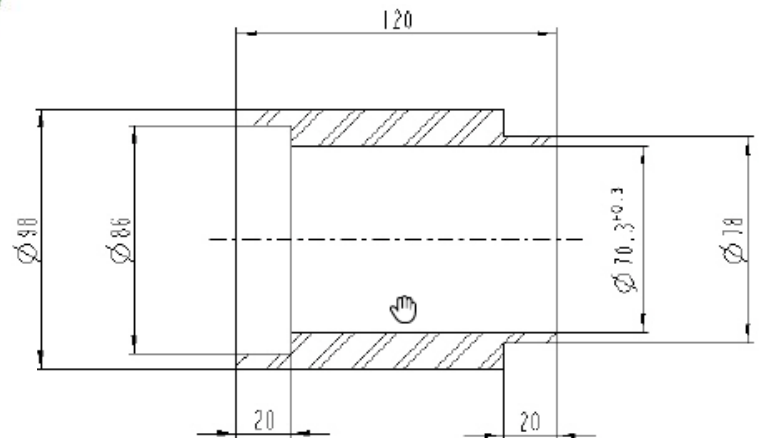
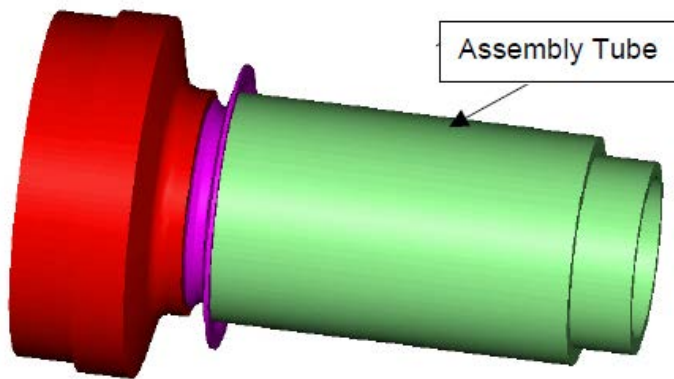
The Disassembly Halfrings will be screwed together with 2 bolts M8x35 DIN912 and 2 hexagon nuts M8 DIN934 . Make sure that the Inner- \varnothing of Halfring1 is placed in the groove of the outer flinger .Take off the Centre Bearing from the midship stub shaft.

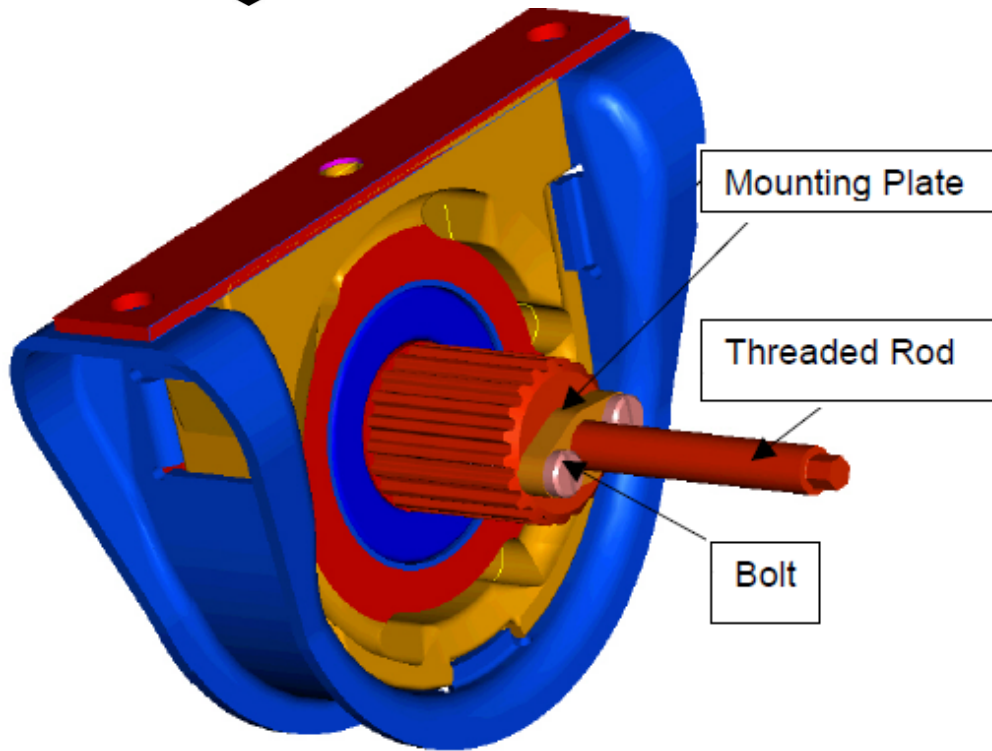


2. Assembly

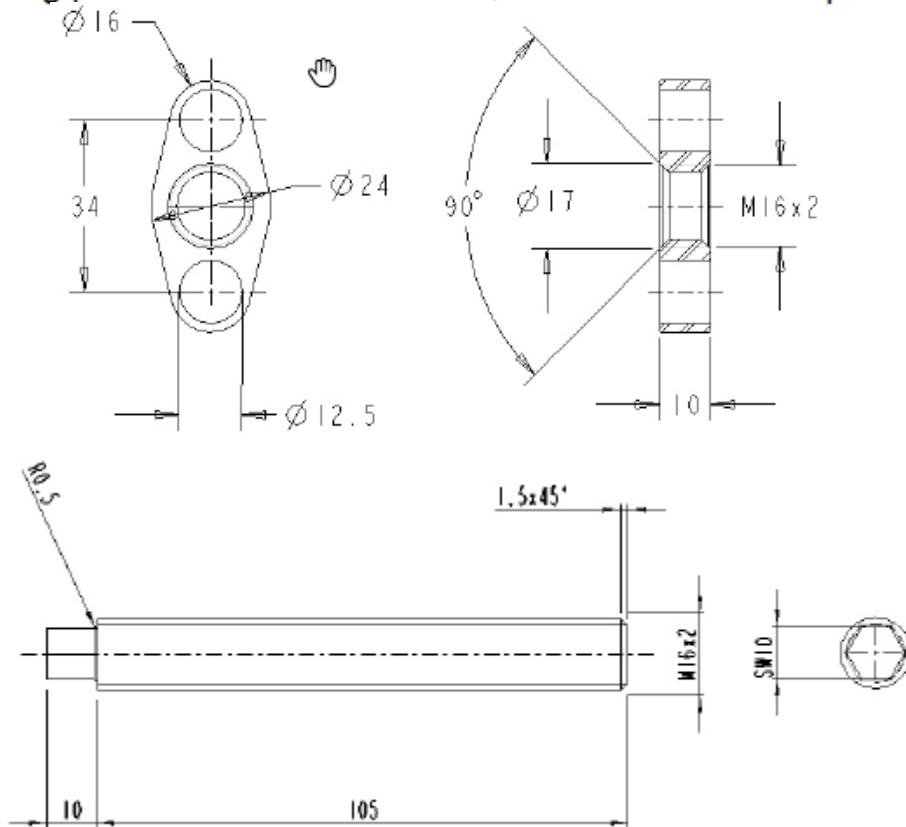
In case of deformation or damage of the outer flinger at the midship flange, take it off.

The new outer flinger will be mounted, using an assembly tube to press on.



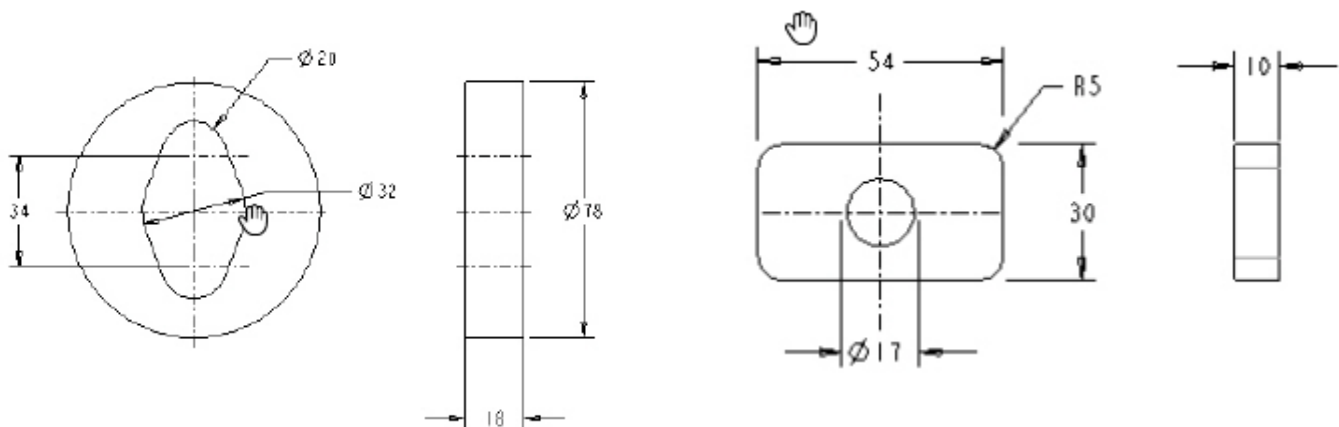
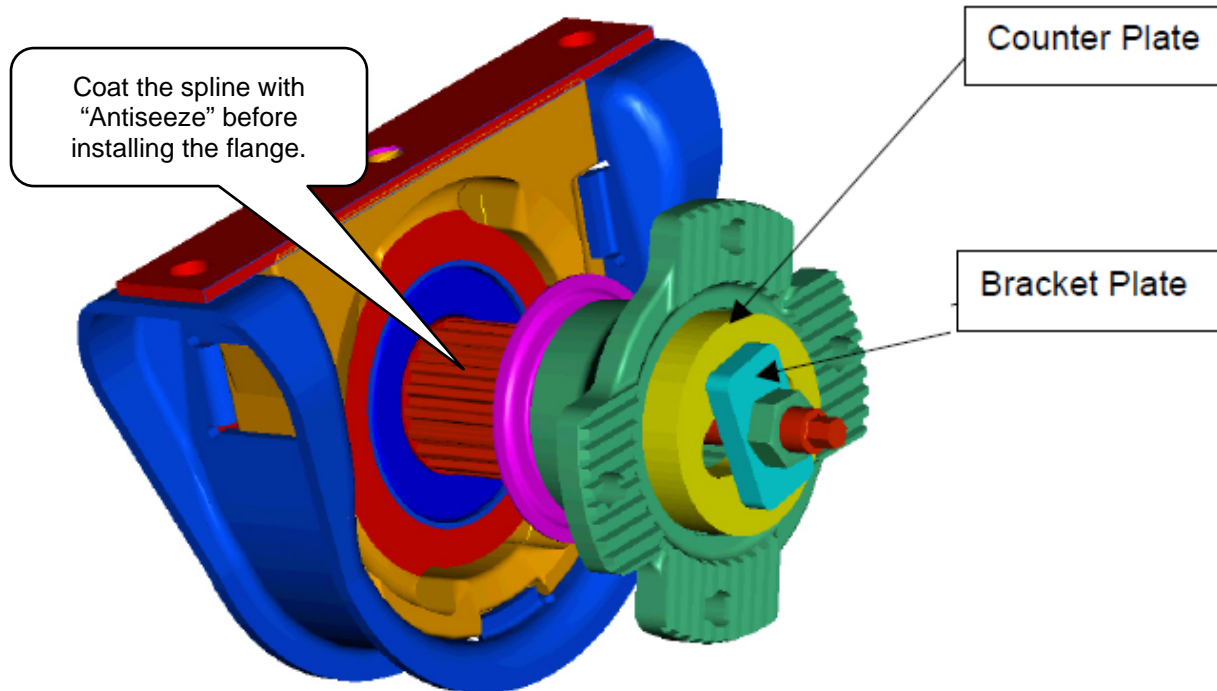


Fix the mounting plate with 2 bolts M12 x 1,5 x 30 on the midship stub shaft.



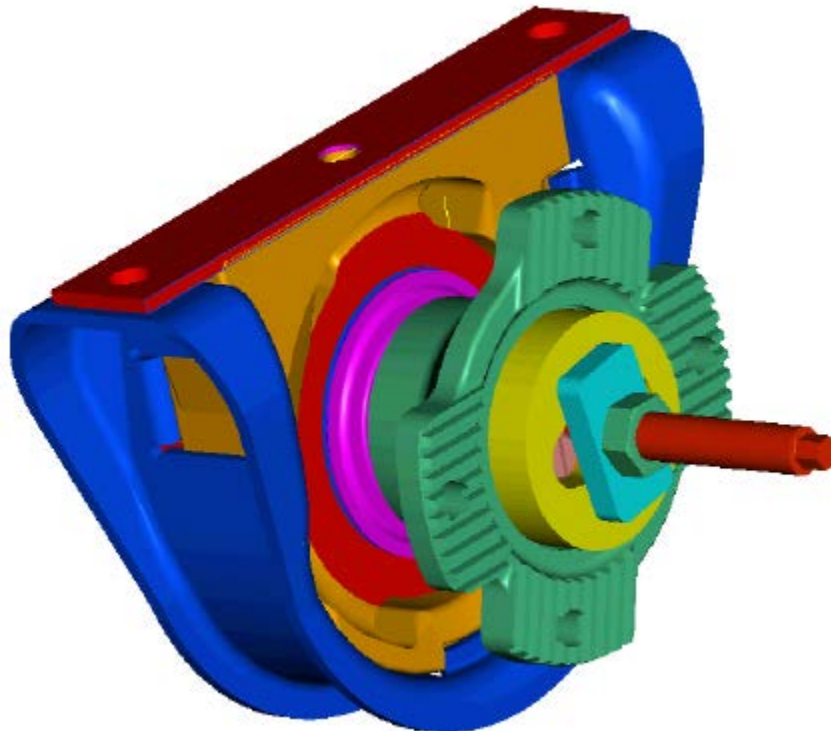


If a new midship flange is used, apply the old marking to the new flange. Unconditional the correct hole pattern has to be secured, to avoid misalignment. With attention to the markings of midship flange and tube push on the flange as much as possible.



Put the counter plate with recess oriented according to the mounting plate against the midship flange and screw it together with the bracket plate and a hexagon nut M16 by hand up to the bracket plate is close to the counter plate.

Push on the midship flange to the midship stub shaft with a suitable tool through the hexagon nut up to the shoulder of the flange is close to the ball bearing.



Remove the assembly parts and fix the washer with 2 new hexagon bolts M12 Tightening torque: 137 Nm

Part Number of the M12 Bolt: **1000008206405**.

Every time the bolts are removed, they should be replaced.

If you have any questions, please call Dana Australia on **1300 003 262** or e-mail aus.spicer@dana.com for more information.

This Document is on: www.dana.com.au