



**DRIVELINE COMPONENTS CATALOG
TUBE SHAFTS**



**J300P-7
DECEMBER 2008**

**Supersedes
Section 7, Dated
March 2006**



Determine which type of tube shaft you have

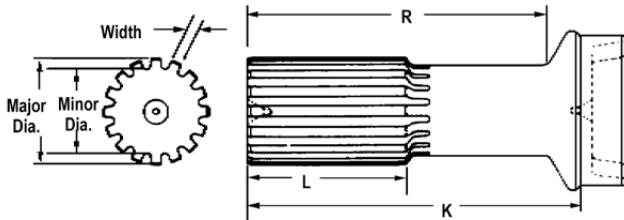
Slip tube shaft (pages 4-7)

Midship tube shaft, style used with a companion flange or end yoke (pages 8-11)

Midship tube shaft, used with outboard slip yokes (pages 12-14)

To identify a Slip Tube Shaft:

1. Determine spline O.D. and number of teeth
 2. Determine the size and wall thickness of the tube it fits
 3. Determine weld to end of spline dimension
- Check any other dimensions listed; Determine part number, check for footnotes

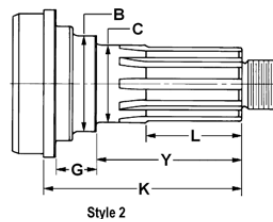
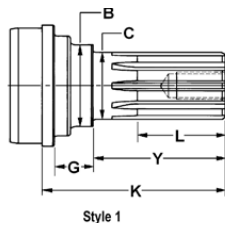


Note: Spline is Glidecote except where footnoted.

Fits Tube		K	L	R	Spicer Part Number
Diameter	Wall Thickness	End of Spline to Weld	Length of Spline	End of Spline to Radius	
1.250-16 Spline					
1.250	.120	6.125	1.906	5.375	2-40-1771
1.750	.065	4.469	2.000	3.938	2-40-971
1.750	.095	5.969	2.000	5.438	2-40-2241
2.000	.083	6.000	2.000	5.406	2-40-1741

To identify a Companion flange or End Yoke Style Midship Tube Shaft:

1. Determine spline O.D. and number of teeth
 2. Determine bearing diameter
 3. Determine the size and wall thickness of the tube it fits
 4. Determine end of spline to bearing shoulder dimension
 5. Determine weld to end of spline dimension
 6. Make sure thread type and size match part being identified
 7. Make sure style of shaft matches part being identified
- Check any other dimensions listed; Determine part number, check for footnotes



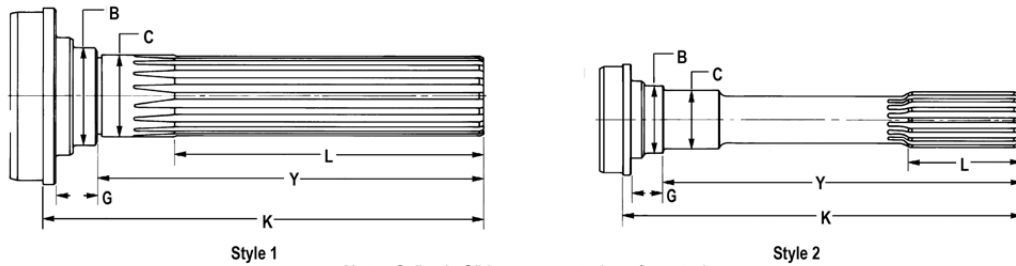
Fits Tube		Y	K	Spline	L	Thread Size	B	G	Midship Tube Shaft Part Number
Tube Dia.	Wall Thickness	End of Spline to Bearing Shoulder	End of Spline to Point of Weld	Style	Length of Spline		Shoulder Diameter	Length of Shoulder	
1.125-26 Involute Spline									
1.181 Bearing Diameter (C)									
2.500	.065	1.906	3.406	2	1.375	.625-18	1.156	.438	2-53-1321
2.500	.065	2.031	3.406	2	1.375	.625-18	1.690	.781	2-53-1011
2.500	.065	2.340	3.407	2	1.730	.625-18	1.344	—	2-53-1561
2.500	.083	1.469	3.406	2	1.375	.625-18	1.469	.393	2-54-351X

Includes slinger



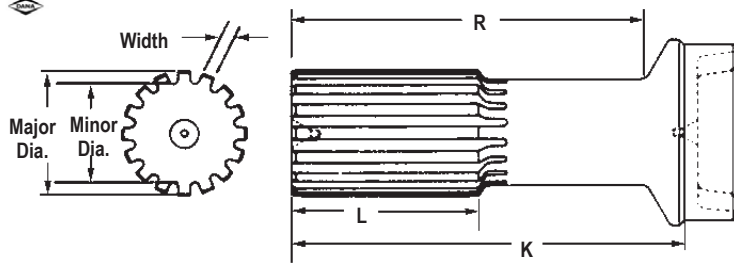
To identify an Outboard Slip Yoke Style Midship Tube Shaft:

1. Determine spline O.D. and number of teeth
 2. Determine bearing diameter
 3. Determine the size and wall thickness of the tube it fits
 4. Determine end of spline to bearing shoulder dimension
 5. Determine weld to end of spline dimension
 6. Make sure style of shaft matches part being identified
- Check any other dimensions listed; Determine part number, check for footnotes



Fits Tube		Y	K	S t y l e	L	B	G	Midship Tube Shaft Part Number
Tube Diameter	Wall Thickness	End of Spline to Bearing Shoulder	End of Spline to Point of Weld		Length of Spline	Shoulder Diameter	Length of Shoulder	
1.3750-16 Spline								
1.378 Bearing Diameter (C)								
2.000	.083	5.969	7.281	1	4.438	1.688	.812	2-53-121
2.000	.083	6.938	8.250	1	5.406	1.688	.812	2-53-511
2.500	.065	6.938	8.000	1	5.406	1.688	.812	2-53-531
2.500	.083	5.969	7.031	1	4.438	1.688	.812	3-53-211•
2.500	.083	6.750	8.094	1	4.969	1.719	1.125	3-53-1351
2.500	.083	6.938	8.000	1	5.406	1.688	.812	2-53-471





Note: Spline is Glidecote except where footnoted.

Fits Tube		K End of Spline to Weld	L Length of Spline	R End of Spline to Radius	Spicer Part Number
Diameter	Wall Thickness				
1.062-16 Spline					
1.250	.095	4.281	1.750	4.000	1-42-31
1.250	.095	5.344	2.000	4.938	1-42-101• <i>Spline not Glidecoted</i>
1.125-26 Involute Spline					
2.500	.065	7.320	1.583	6.665	27-40-31•
1.148-26 Involute Spline					
1.250	.095	4.438	2.000	4.188	10-40-11 <i>Spline not Glidecoted</i>
1.250-15 Based On 16 Spline					
1.750	.065	4.469	2.000	3.938	2-40-1071
1.250-16 Spline					
1.250	.120	6.125	1.906	5.375	2-40-1771
1.750	.065	4.469	2.000	3.938	2-40-971
1.750	.095	5.969	2.000	5.438	2-40-2241
2.000	.083	6.000	2.000	5.406	2-40-1741
2.000	.120	6.000	2.000	5.406	2-40-2381
2.500	.065	6.125	2.000	5.406	2-40-2211
2.500	.065	6.125	3.625	5.406	2-40-2481•
2.500	.065	7.750	2.500	7.031	2-40-2301•
1.290-20 Involute Spline					
3.500	.065	7.880	3.500	6.880	5002972
1.312-19 Based On 20 Spline					
2.000	.120	6.913	3.500	6.338	5001930
2.500	.083	7.530	3.500	6.840	2-40-2841•
3.500	.065	7.880	3.500	6.880	5001918
1.375-15 Based On 16 Spline					
2.500	.095	7.531	3.625	6.812	2-40-2791
					<i>2-40-2791 was replaced by 2-40-2461</i>
1.375-16 Spline					
1.250	.095	5.090	2.750	4.690	2-42-581
1.250	.188	8.125	3.625	7.640	2-40-2781•
1.750	.095	7.750	3.625	7.240	2-40-2681
2.000	.083	5.188	2.250	4.625	2-40-1031
2.000	.083	6.188	2.250	5.625	2-40-2451
2.000	.083	6.562	2.125	6.000	2-40-1841
2.000	.120	5.188	2.250	4.625	2-40-2021
2.000	.120	6.188	2.250	5.625	2-40-1701
2.000	.120	6.188	3.625	5.625	2-40-2441
2.000	.120	6.190	2.250	5.620	2-40-2851•
					<i>.310 x 30 degree chamfer on spline end</i>
2.000	.120	7.906	3.625	7.328	2-40-2661
2.500	.065	5.344	2.250	4.625	2-40-1041
2.500	.065	6.344	2.250	5.625	2-40-1811
2.500	.065	6.844	2.250	6.125	2-40-1291
2.500	.065	8.000	3.625	7.312	2-40-2671•
2.500	.083	5.344	2.250	4.625	2-40-1131
2.500	.083	6.344	2.250	5.625	2-40-1711

• Part is discontinued

■ Part is available until supply is exhausted

▲ Not sold separately

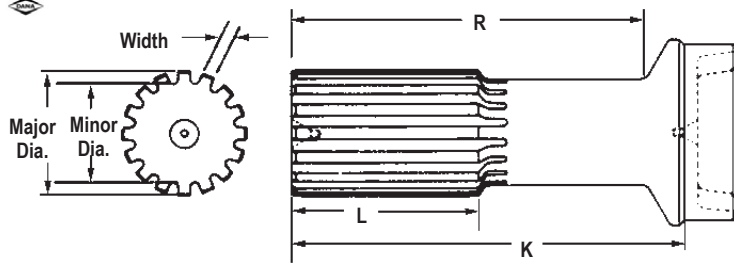


Fits Tube		K	L	R	Spicer Part Number
Diameter	Wall Thickness	End of Spline to Weld	Length of Spline	End of Spline to Radius	
1.375-16 Spline (Continued)					
2.500	.083	7.100	3.188	6.375	2-40-2801•
2.500	.083	7.375	3.000	6.656	2-40-2871•
2.500	.083	7.531	2.250	6.812	2-40-1851
2.500	.083	7.531	2.250	6.812	2-40-2631
					<i>Special center in spline end</i>
2.500	.083	7.531	3.625	6.813	2-40-2461
2.500	.083	8.000	3.000	7.310	2-40-2941•
2.500	.083	10.000	3.000	9.375	2-40-2611
2.750	.083	7.390	3.000	6.540	2-40-2891•
3.000	.065	5.625	2.250	4.812	2-40-1211
3.000	.065	6.438	2.250	5.625	2-40-1221
3.000	.065	7.625	2.250	6.812	2-40-2051
3.000	.083	6.050	2.250	5.625	2-40-2811
3.000	.083	6.438	2.250	5.625	2-40-1521
3.000	.083	7.625	2.250	6.812	2-40-2231
3.000	.083	7.625	3.620	6.812	2-40-2691
3.000	.083	8.641	6.781	7.828	2-40-1871
3.500	.065	6.625	2.250	5.625	2-40-1671
3.500	.065	7.875	3.625	6.875	2-40-2761
3.500	.083	6.625	2.250	5.625	2-40-1531
3.500	.083	7.906	2.250	6.906	2-40-2041
3.500	.083	7.906	3.625	6.906	2-40-2531
3.500	.083	8.969	6.906	7.969	2-40-2091
1.375-31 Based On 32 Spline					
2.000	.120	6.312	3.000	5.750	2-40-2421•
2.000	.120	7.438	3.531	6.875	2-40-2361
					<i>Spline not Glidecoted</i>
2.500	.083	6.344	2.250	5.625	2-40-2501•
					<i>Spline not Glidecoted</i>
1.437-21 Based On 22 Spline					
3.500	.083	8.281	3.500	7.344	3-40-2241
1.500-15 Based On 16 Spline					
2.500	.156	7.812	2.500	7.094	3-42-451
1.500-16 Spline					
2.500	.083	5.625	2.500	4.969	3-40-1471
3.000	.083	5.938	2.500	5.125	3-40-1101
3.000	.083	6.281	3.000	5.469	3-40-1511
3.000	.083	7.250	2.500	6.438	3-40-1611
3.000	.083	7.406	3.000	6.594	3-40-1421
3.000	.083	8.250	3.000	7.406	3-40-1911
3.000	.095	6.437	2.500	5.610	3-40-1961
3.500	.065	6.562	3.000	5.625	3-40-1521▪
3.500	.065	7.344	2.500	6.406	3-40-481
3.500	.083	5.375	2.000	4.438	3-40-2071
3.500	.083	6.562	3.000	5.625	3-40-1531
3.500	.083	6.844	2.500	5.828	3-40-1431
3.500	.083	7.344	2.500	6.406	3-40-1621
3.500	.083	7.531	3.000	6.594	3-40-1491
4.000	.083	7.875	3.000	6.688	3-40-1501
4.500	.095	7.688	2.500	6.438	3-40-1281•
1.562-16 Spline					
3.500	.083	6.750	3.000	5.810	3-40-1571
3.500	.083	8.750	3.000	7.810	3-40-1871
3.500	.083	10.750	3.000	9.810	3-40-1411
4.000	.083	6.940	3.000	5.810	3-40-1381

• Part is discontinued ■ Part is available until supply is exhausted ▲ Not sold separately



Important: See Safety Information in General Information Section (J300P-GI)



Note: Spline is Glidecote except where footnoted.

Fits Tube		K End of Spline to Weld	L Length of Spline	R End of Spline to Radius	Spicer Part Number
Diameter	Wall Thickness				
1.562-16 Spline (Continued)					
4.000	.083	8.940	3.000	7.810	3-40-1551•
1.562-23 Based On 24 Spline					
3.500	.083	8.000	3.000	7.060	3-40-2091
					<i>3-40-2091 was replaced by 3-40-2171</i>
1.563-23 Based On 24 Spline					
3.500	.083	7.402	3.500	5.781	55-40-61X
3.500	.083	8.000	3.000	7.060	3-40-2171
3.500	.083	8.701	3.500	7.080	55-40-81X•
4.000	.083	7.402	3.500	5.781	55-40-21X•
4.000	.083	8.701	3.500	7.080	55-40-41X•
1.750-16 Spline					
3.000	.095	6.750	3.000	5.906	4-40-821
3.500	.095	6.781	3.000	5.812	4-40-761
3.500	.095	7.938	3.000	6.969	4-40-741•
3.500	.095	9.219	3.000	8.250	4-40-721
3.500	.095	12.000	5.000	11.030	4-40-1031•
3.500	.095	14.219	3.000	13.360	4-40-981•
3.500	.095	15.469	3.000	14.610	4-40-1021
3.500	.095	20.120	3.000	19.250	4-40-1011•
3.500	.095	20.750	3.000	19.870	4-40-1061
3.500	.156	6.781	3.000	5.812	4-40-951
4.000	.083	6.938	3.000	5.812	4-40-781
4.000	.134	6.938	3.000	5.812	4-40-991
1.752-26 Based On 27 Spline					
3.500	.095	8.752	3.500	7.140	70-40-81X•
4.000	.083	7.953	3.500	6.531	70-40-21X
4.000	.083	8.751	3.500	7.330	70-40-41X
1.812-28 Involute Spline					
3.500	.095	9.812	4.000	8.906	4-40-961•
1.937-29 Based On 30 Spline					
4.000	.095	8.799	4.000	6.841	100-40-21X•
					<i>Refer to bulletin JOI-TEC-41 for important spline data</i>
4.000	.095	9.590	4.000	7.831	100-40-31
					<i>100-40-31 was replaced by 100-40-41X</i>
					<i>Refer to bulletin JOI-TEC-41 for important spline data</i>
4.000	.095	9.590	4.000	7.831	100-40-41X
					<i>Refer to bulletin JOI-TEC-41 for important spline data</i>
1.937-30 Involute Spline					
2.756	.159	7.185	2.953	6.161	6C-40-21X•
					<i>Includes 212114-1X tube and seal assembly</i>
4.000	.095	8.281	4.000	7.188	90-40-21
4.000	.134	10.094	4.000	9.000	90-40-11
4.000	.134	8.281	4.000	7.190	90-40-41
2.000-15 Based On 16 Spline					
3.500	.095	8.562	3.500	7.656	5-40-491•

• Part is discontinued ■ Part is available until supply is exhausted ▲ Not sold separately

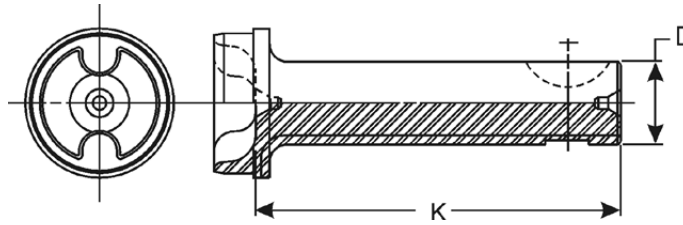


Fits Tube		K	L	R	Spicer Part Number
Diameter	Wall Thickness	End of Spline to Weld	Length of Spline	End of Spline to Radius	
2.000-16 Spline					
3.500	.095	7.562	3.500	6.656	5-40-451
3.500	.095	8.562	3.500	7.625	5-40-471
3.500	.095	9.562	3.500	8.656	5-40-501
3.500	.134	10.188	3.500	9.281	5-40-1041
3.500	.134	7.562	3.500	6.656	5-40-1191
3.500	.134	7.844	4.000	6.938	4-40-891
3.500	.134	8.562	3.500	7.656	5-40-1101
<i>5-40-1101 was replaced by 5-40-1151</i>					
3.500	.134	8.562	3.500	7.656	5-40-1151
3.500	.134	9.688	3.500	8.781	5-40-1011
3.500	.156	8.562	3.500	7.656	5-40-1121▪
3.500	.156	9.562	3.500	8.688	5-40-1031
3.550	.207	7.562	3.500	6.656	5-40-1241•
4.000	.134	9.844	3.500	8.781	5-40-1051
2.500-10 Spline					
3.500	.156	10.344	4.000	9.500	6-40-61
3.500	.156	8.344	4.000	7.500	6-40-51•
2.500-15 Based On 16 Spline					
4.000	.134	10.562	4.000	9.562	6-40-831
2.500-16 Spline					
3.500	.156	9.250	4.000	8.375	6-40-741
3.550	.207	10.344	4.000	9.500	6-40-701
4.000	.134	10.562	4.000	9.562	6-40-521
4.000	.134	10.562	3.500	9.562	6-40-891•
4.000	.134	13.500	4.000	12.500	6-40-821•
4.000	.134	8.438	4.000	7.438	6-40-711
4.000	.134	9.250	4.000	8.250	6-40-541
4.500	.134	10.656	4.000	9.469	6-40-621
4.500	.134	9.500	4.000	8.312	6-40-631
2.500-9 Based On 10 Spline					
3.500	.156	10.344	4.000	9.500	6-40-111
2.672-18 Involute Spline					
3.500	.134	3.594	1.500	3.281	5-40-1181 <i>Spline not Glidecoted</i>
3.550	.207	3.594	2.000	3.281	5-40-1341• <i>Spline not Glidecoted</i>
3.000-16 Spline					
3.550	.207	10.812	4.500	10.000	6.5-40-141•
4.500	.134	11.250	4.500	10.031	6.5-40-191
4.500	.134	11.250	5.500	10.031	6.5-40-251•
4.500	.134	9.469	4.500	8.406	6.5-40-201
4.500	.259	11.531	4.500	10.219	8-40-101
4.500	.259	9.906	4.500	8.594	8-40-91
3.250-18 Involute Spline					
3.500	.156	4.250	2.000	3.906	6-40-181 <i>Spline not Glidecoted</i>

• Part is discontinued ■ Part is available until supply is exhausted ▲ Not sold separately

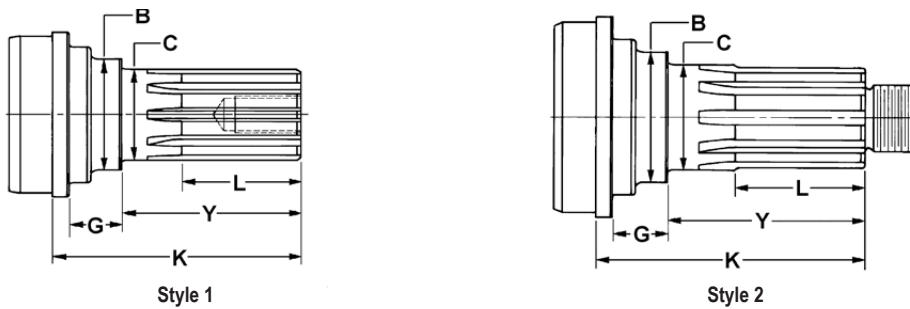


Important: See Safety Information in General Information Section (J300P-GI)



D	K	Fits Tube		Spicer® Assembly Number
Diameter	End of Shaft to Weld	Diameter	Wall Thickness	
.999	4.310	1.750	.065	10-53-18X* <i>Key Included</i>

SPLINED MIDSHIP TUBE SHAFTS Companion Flange or End Yoke Design



Fits Tube		Y	K	S t y l e	L Length of Spline	Thread Size	B	G	Midship Tube Shaft Part Number
Tube Dia.	Wall Thickness	End of Spline to Bearing Shoulder	End of Spline to Point of Weld				Shoulder Diameter	Length of Shoulder	

1.125-26 Involute Spline

1.181 Bearing Diameter (C)

2.500	.065	1.906	3.406	2	1.375	.625-18	1.156	.438	2-53-1321
2.500	.065	2.031	3.406	2	1.375	.625-18	1.690	.781	2-53-1011•
2.500	.065	2.340	3.407	2	1.730	.625-18	1.344	.852	2-53-1561•
2.500	.083	1.469	3.406	2	1.375	.625-18	1.469	.393	2-54-351X• <i>Includes slinger</i>
2.500	.083	1.469	3.406	2	1.375	.625-18	1.469	.393	2-54-361•
2.500	.083	1.906	3.406	2	1.375	.625-18	1.181	.665	2-53-1351
2.500	.083	2.031	3.406	2	1.359	.625-18	1.500	.750	2-53-1051
2.500	.083	2.031	3.406	2	1.344	.625-18	1.188	1.165	2-53-1331•
3.000	.065	2.125	3.410	2	1.344	.625-18	1.656	.703	2-53-1161•
3.000	.065	2.340	3.406	2	1.568	.625-18	1.344	.852	2-53-1571•
3.000	.065	2.438	4.300	2	1.875	.625-18	1.500	1.859	2-53-1311
3.000	.083	2.031	3.406	2	1.344	.625-18	1.453	.400	2-53-1071•
3.000	.083	2.440	4.531	2	1.875	.625-18	1.496	1.859	5001931
3.000	.083	2.440	5.066	2	1.902	.625-18	1.500	2.394	5002332 <i>Hardened seal surface</i>

1.125-26 Involute Spline

1.260 Bearing Diameter (C)

2.000	.083	2.280	3.297	2	1.469	.625-18	1.688	.703	2-53-901
-------	------	-------	-------	---	-------	---------	-------	------	----------

1.250-29 Involute Spline

1.378 Bearing Diameter (C)

3.000	.083	2.440	3.190	2	1.530	1.000-20	1.690	.500	2-53-1411•
-------	------	-------	-------	---	-------	----------	-------	------	------------

• Part is discontinued ■ Part is available until supply is exhausted ▲ Not sold separately



SPLINED MIDSHIP TUBE SHAFTS

Companion Flange or End Yoke Design



Fits Tube		Y	K	S t y l e	L	Thread Size	B	G	Midship Tube Shaft Part Number
Tube Dia.	Wall Thickness	End of Spline to Bearing Shoulder	End of Spline to Point of Weld		Length of Spline		Shoulder Diameter	Length of Shoulder	
1.250-29 Involute Spline									
1.574 Bearing Diameter (C)									
3.500	.083	2.340	3.460	2	1.530	1.000-20	1.810	.880	3-53-2541
1.375-10 Spline									
1.378 Bearing Diameter (C)									
2.500	.065	2.688	3.750	2	1.781	1.000-20	1.688	.812	2-53-1211•
2.500	.083	2.688	3.750	2	1.781	1.000-20	1.688	.812	2-53-1191
3.000	.083	2.291	3.969	1	2.000	.500-20	1.688	1.062	3-53-191
3.000	.083	2.656	4.000	2	1.688	1.000-20	1.719	1.125	3-54-611
3.000	.083	2.688	3.750	2	1.781	1.000-20	1.688	.812	2-53-1151
1.500-10 Spline									
1.574 Bearing Diameter (C)									
3.000	.083	2.650	3.875	2	1.938	1.000-20	1.812	1.040	3-53-2361•
3.000	.083	2.650	3.875	2	1.938	1.000-20	1.812	1.040	3-53-2371X•
3.000	.083	2.750	3.875	2	1.940	1.000-20	1.810	.875	3-53-1781
3.000	.083	2.938	4.000	2	1.844	1.000-20	1.938	.812	3-53-1811
3.000	.083	3.590	4.650	2	1.940	1.000-20	1.940	.810	3-53-2321•
3.000	.095	2.750	3.875	2	1.938	1.000-20	1.812	.875	3-53-1891
3.500	.065	3.625	3.875	2	1.812	1.000-20	1.812	.875	3-53-2061
3.500	.083	2.750	3.875	2	1.812	1.000-20	1.812	.540	3-53-2301
3.500	.083	2.750	3.880	2	1.940	1.000-20	1.810	.890	3-53-1791
3.500	.083	2.969	4.031	2	2.000	1.000-20	1.938	.812	3-53-1821
3.500	.083	3.000	4.406	2	2.031	1.000-20	2.062	1.156	3-53-421•
3.500	.095	2.969	4.031	2	2.000	1.000-20	1.938	.812	4-53-361
4.000	.083	2.750	3.875	2	1.938	1.000-20	1.812	1.125	3-53-1801
4.000	.083	2.969	4.031	2	2.000	1.000-20	1.938	.812	3-53-1831
1.500-10 Spline									
1.771 Bearing Diameter (C)									
3.500	.095	2.969	4.062	2	2.000	1.000-20	2.190	.810	4-53-401
4.000	.083	2.969	4.062	2	2.000	1.000-20	2.188	.810	4-53-271
1.500-10 Spline									
2.000 Bearing Diameter (C)									
3.500	.095	5.375	5.875	2	1.938	1.000-20	2.500	.230	4-53-351• <i>used with pillow block</i>
1.543-36 Involute Spline									
1.574 Bearing Diameter (C)									
3.500	.083	2.740	3.538	2	1.875	1.000-20	1.803	.559	55-53-101
1.750-10 Spline									
1.771 Bearing Diameter (C)									
3.500	.095	3.250	4.344	2	2.281	1.250-18	2.188	.812	5-53-111•
3.500	.134	3.188	4.281	2	2.000	1.250-18	2.188	.812	5-53-141
4.000	.134	3.250	4.344	2	2.281	1.250-18	2.188	.812	5-53-191
1.750-34 Involute Spline									
1.771 Bearing Diameter (C)									
3.500	.095	3.188	5.050	2	2.060	1.250-18	2.153	.322	70-53-61 <i>Spline has helix on tooth. End yokes will be a tight fit.</i>
3.500	.134	3.250	4.344	2	2.062	1.250-18	2.188	.812	5-53-261 <i>Spline has helix on tooth. End yokes will be a tight fit.</i>
4.000	.095	3.189	4.327	2	2.059	1.250-18	2.154	—	100-53-31 <i>Spline has helix on tooth. End yokes will be a tight fit.</i>
4.000	.095	3.250	4.344	2	2.125	1.250-18	2.188	.812	90-53-31 <i>Spline has helix on tooth. End yokes will be a tight fit.</i>
4.000	.134	3.125	4.219	2	2.000	1.250-18	2.188	.812	90-53-11 <i>Spline has helix on tooth. End yokes will be a tight fit.</i>

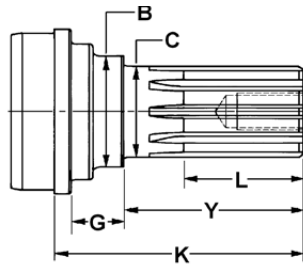
• Part is discontinued ■ Part is available until supply is exhausted ▲ Not sold separately



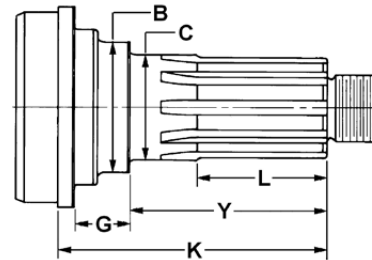
Important: See Safety Information in General Information Section (J300P-GI)

SPLINED MIDSHIP TUBE SHAFTS

Companion Flange or End Yoke Design



Style 1



Style 2

Fits Tube		Y	K	S t y l e	L	Thread Size	B	G	Midship Tube Shaft Part Number
Tube Dia.	Wall Thickness	End of Spline to Bearing Shoulder	End of Spline to Point of Weld		Length of Spline		Shoulder Diameter	Length of Shoulder	
1.750-34 Involute Spline (Continued)									
1.771 Bearing Diameter (C)									
4.000	.134	3.250	4.344	2	2.125	1.250-18	2.188	.812	5-53-271
1.752-34 Involute Spline									
1.772 Bearing Diameter (C)									
4.000	.083	3.188	3.988	2	2.059	1.250-18	2.154	.559	70-53-31•
1.950-38 Involute Spline									
1.968 Bearing Diameter (C)									
4.000	.134	4.060	5.150	2	2.840	1.250-18	2.440	.812	6-53-411
<i>Spline has helix on tooth. End yokes will be a tight fit.</i>									
4.330	.197	3.811	5.055	2	2.618	M30X2-6G	2.440	.811	140-53-11
4.562	.165	4.062	5.156	2	2.844	1.250-18	2.438	.812	6-53-421
<i>Spline has helix on tooth. End yokes will be a tight fit.</i>									
4.566	.157	3.346	4.591	2	2.125	M30X2-6G	2.441	.811	140-53-41•
4.567	.157	3.811	5.055	2	2.618	M30X2-6G	2.441	.811	140-53-31•
1.958-10 Spline									
1.967 Bearing Diameter (C)									
4.000	.134	3.000	4.438	2	1.938	1.250-18	2.625	1.062	6-53-211•
1.958-10 Spline									
1.968 Bearing Diameter (C)									
3.500	.156	4.062	5.156	2	3.000	1.250-18	2.438	.812	6-53-151•
4.000	.134	4.062	5.156	2	2.875	1.250-18	2.438	.812	6-53-201
4.500	.134	4.062	5.156	2	2.875	1.250-18	2.438	.812	6-53-241
1.983-31 Involute Spline									
2.363 Bearing Diameter (C)									
3.500	.134	4.484	7.406	2	2.141	.500-20	2.774	1.281	4-53-331•
1.983-31 Involute Spline									
2.437 Bearing Diameter (C)									
3.500	.134	7.531	8.562	1	1.859	M12X1.750-6H	—	4.719	4-53-501•
<i>.268 key width in shoulder; Metric thread</i>									
2.000-10 Spline									
2.165 Bearing Diameter (C)									
4.000	.134	4.250	6.844	2	2.875	1.250-18	2.938	1.875	6-53-331
4.000	.134	4.562	7.875	2	2.625	1.250-18	2.562	2.938	6-53-261•
2.250-10 Spline									
2.361 Bearing Diameter (C)									
4.500	.259	3.750	5.281	2	2.562	1.250-18	2.875	1.156	8-53-41•
2.350-16 Spline									
2.362 Bearing Diameter (C)									
3.500	.188	4.000	5.310	2	2.750	1.250-18	2.880	.810	6.5-53-21•
4.000	.134	4.000	5.312	2	2.625	1.250-18	2.875	.812	6-53-311
4.500	.134	4.000	5.312	2	2.750	1.250-18	2.875	1.312	6.5-53-91
4.500	.259	4.000	5.438	2	2.750	1.250-18	2.875	.812	6.5-53-51

• Part is discontinued ■ Part is available until supply is exhausted ▲ Not sold separately



SPLINED MIDSHIP TUBE SHAFTS

Companion Flange or End Yoke Design

Fits Tube		Y	K	S t y l e	L	Thread Size	B	G	Midship Tube Shaft Part Number
Tube Dia.	Wall Thickness	End of Spline to Bearing Shoulder	End of Spline Spline to Point of Weld		Length of Spline		Shoulder Diameter	Length of Shoulder	
2.350-46 Involute Spline									
2.362 Bearing Diameter (C)									
4.062	.165	4.000	5.312	2	2.625	1.250-18	2.875	.812	6.3-53-21
<i>Spline has helix on tooth. End yokes will be a tight fit.</i>									
4.330	.197	4.000	5.311		2.618	M30X2-6G	2.886	.811	140-53-21
<i>Spline has helix on tooth. End yokes will be a tight fit.</i>									
4.500	.134	4.000	5.312	2	2.625	1.250-18	2.875	.812	6.5-53-171
<i>Spline has helix on tooth. End yokes will be a tight fit.</i>									
4.500	.259	4.000	5.312	2	2.625	1.250-18	2.875	.812	6.5-53-181
<i>Spline has helix on tooth. End yokes will be a tight fit.</i>									
5.197	.236	3.980	5.291	2	2.618	M30X2-6G	2.886	.812	250-53-11
<i>Spline has helix on tooth. End yokes will be a tight fit.</i>									
2.350-46 Involute Spline									
2.560 Bearing Diameter (C)									
3.500	.134	6.703	7.000	1	2.469	.500-20	3.125	1.234	4-53-301•
4.095	.180	5.156	7.406	1	2.812	.500-20	3.125	1.312	6-53-351•
2.350-46 Involute Spline									
2.750 Bearing Diameter (C)									
4.500	.259	5.490	6.310	2	2.750	1.250-18	3.620	—	6.5-53-201•
2.360-16 Spline									
2.361 Bearing Diameter (C)									
4.000	.134	4.688	7.562	2	3.000	1.250-18	3.000	1.188	6-53-271
2.500-10 Spline									
2.559 Bearing Diameter (C)									
4.500	.134	6.281	7.000	2	2.938	1.500-18	3.500	1.500	6.5-53-111
2.656-18 Involute Spline									
2.756 Bearing Diameter (C)									
4.500	.259	4.562	6.000	2	2.875	1.500-18	3.312	.812	8-53-61

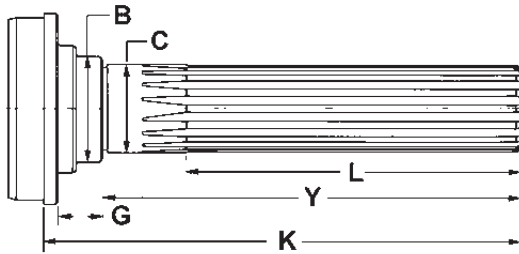
• Part is discontinued ■ Part is available until supply is exhausted ▲ Not sold separately



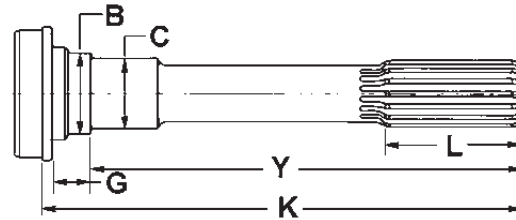
Important: See Safety Information in General Information Section (J300P-GI)

SPLINED MIDSHIP TUBE SHAFTS

Slip Yoke Design For Use with Outboard Slip Yokes



Style 1



Style 2

Note: Spline is Glidecote except where footnoted.

Fits Tube		Y	K	S t y l e	L	B	G	Midship Tube Shaft Part Number
Tube Diameter	Wall Thickness	End of Spline to Bearing Shoulder	End of Spline to Point of Weld		Length of Spline	Shoulder Diameter	Length of Shoulder	
1.3120-19 Based On 20 Spline								
1.575 Bearing Diameter (C)								
3.000	.065	6.851	7.466	2	3.500	1.800	.375	2-53-1441 <i>May use boot 212094X, order separate</i>
3.000	.083	6.850	7.598	2	3.500	1.690	.500	5003448 <i>May use boot 212094X, order separate</i>
1.3750-15 Based On 16 Spline								
1.378 Bearing Diameter (C)								
2.500	.083	7.406	8.469	2	2.500	1.688	.812	2-53-921
2.500	.083	7.812	8.875	2	2.500	1.688	.812	2-53-681
3.000	.065	7.812	8.875	2	2.500	1.688	.812	2-53-691
3.000	.083	7.969	9.031	2	2.500	1.688	.812	2-53-711 <i>May use boot 211916X or dust cap 211121X, order separate</i>
3.000	.083	8.480	9.540	2	3.500	1.688	.810	2-53-1511▪ <i>May use boot 211932X, order separate</i>
1.3750-16 Spline								
1.378 Bearing Diameter (C)								
2.000	.083	5.969	7.281	1	4.438	1.688	.812	2-53-121
2.000	.083	6.938	8.250	1	5.406	1.688	.812	2-53-511
2.500	.065	6.938	8.000	1	5.406	1.688	.812	2-53-531
2.500	.083	5.969	7.031	1	4.438	1.688	.812	3-53-211•
2.500	.083	6.750	8.094	1	4.969	1.719	1.125	3-53-1351
2.500	.083	6.938	8.000	1	5.406	1.688	.812	2-53-471
3.000	.065	6.938	8.000	1	5.406	1.688	.812	2-53-491
3.000	.083	6.750	8.094	1	4.969	1.719	1.125	3-53-1361
3.000	.083	6.781	7.031	1	4.438	1.688	.812	3-53-1371
3.000	.083	6.938	8.000	1	5.406	1.688	.812	2-53-501
3.000	.083	7.848	8.908	2	2.500	1.688	.812	2-53-1131
3.500	.065	6.750	8.094	1	4.969	1.719	1.125	3-53-1381•
1.3750-31 Based On 32 Spline								
1.378 Bearing Diameter (C)								
3.500	.083	7.469	8.812	2	3.344	1.719	1.125	3-53-1301 <i>Spline not Glidecoted</i>
1.3760-31 Based On 32 Spline								
1.378 Bearing Diameter (C)								
2.750	.065	7.469	8.812	2	3.344	1.719	1.125	3-53-1991
3.000	.083	7.469	8.812	2	3.344	1.719	1.125	3-53-1181

• Part is discontinued ▪ Part is available until supply is exhausted ▲ Not sold separately



SPLINED MIDSHIP TUBE SHAFTS

Slip Yoke Design For Use with Outboard Slip Yokes

Fits Tube		Y	K	S t y l e	L	B	G	Midship Tube Shaft Part Number
Tube Diameter	Wall Thickness	End of Spline to Bearing Shoulder	End of Spline to Point of Weld		Length of Spline	Shoulder Diameter	Length of Shoulder	
1.4370-21 Based On 22 Spline								
1.575 Bearing Diameter (C)								
3.000	.083	8.838	9.618	2	3.500	1.809	.540	5008002
3.000	.083	9.500	10.620	2	3.500	1.810	.880	3-53-2451 <i>May use boot 211503X, order separate</i>
3.500	.065	7.385	8.000	2	3.500	1.812	.375	3-53-2381 <i>May use boot 212094X, order separate</i>
3.500	.065	7.492	8.240	2	3.500	1.690	.500	5002410 <i>May use boot 212094X, order separate</i>
3.500	.083	7.715	8.080	2	3.500	1.800	.375	3-53-2441 <i>May use boot 212094X, order separate</i>
3.500	.083	9.510	10.630	2	3.500	1.810	.880	3-53-2591 <i>May use boot 212094X or 211010X, order separate</i>
1.5000-15 Based On 16 Spline								
1.575 Bearing Diameter (C)								
3.000	.083	8.240	9.375	2	3.000	1.812	.812	3-53-1551 <i>May use 211158X dust cap (or) 211600X or 212010X boot kit,</i>
3.000	.083	9.500	10.625	2	3.000	1.810	.875	3-53-1951 <i>May use boot 211503X, order separate</i>
3.000	.095	8.234	9.350	2	3.000	1.812	.875	3-53-2291 <i>May use boot 212010X, order separate</i>
3.500	.065	8.230	9.350	2	3.000	1.810	.875	3-53-2011
3.500	.083	9.625	10.719	2	3.000	1.810	.875	3-53-2281 <i>May use boot 211916X or dust cap 211121X, order separate</i>
4.000	.083	9.500	10.625	2	3.000	1.810	.875	3-53-2181• <i>May use boot 211503X, order separate</i>
4.095	.180	9.500	10.625	2	3.000	1.810	.875	3-53-1981•
1.5000-16 Spline								
1.575 Bearing Diameter (C)								
3.000	.083	5.940	7.062	1	4.438	1.810	.875	3-53-1031
3.000	.083	7.188	8.312	1	5.688	1.810	.875	3-53-1041•
3.000	.083	8.080	9.200	1	6.580	1.810	.875	3-53-1531
3.000	.083	9.040	10.160	1	7.540	1.810	.875	3-53-1481
3.500	.083	5.940	7.062	1	4.440	1.810	.875	3-53-1121
4.000	.083	5.940	7.062	1	4.438	1.810	.875	3-53-1131
1.5620-16 Spline								
1.575 Bearing Diameter (C)								
3.000	.083	7.470	8.531	1	5.940	1.940	.875	3-53-411•
3.500	.083	7.410	8.531	1	5.906	1.810	.875	3-53-1311
3.500	.083	7.470	8.531	2	5.938	1.940	.812	3-53-451 <i>3-53-451 was replaced by 5007832</i>
3.500	.083	7.470	8.578	2	3.000	1.940	.810	5007832
3.500	.083	7.880	9.290	1	5.938	2.060	1.156	3-53-441•
4.000	.083	7.470	8.531	1	5.938	1.940	.812	3-53-1191
1.5620-16 Spline								
1.772 Bearing Diameter (C)								
3.500	.095	7.480	8.570	1	5.940	2.190	.810	4-53-531•
1.5620-23 Based On 24 Spline								
1.575 Bearing Diameter (C)								
3.500	.083	7.531	8.331	2	3.500	1.803	.555	55-53-11 <i>May use boot 212094X, order separate</i>
3.500	.083	8.704	9.500	2	3.500	1.803	.555	55-53-51 <i>May use boot 212094X, order separate</i>
3.500	.083	8.732	9.512	2	3.000	1.811	.540	5008004

• Part is discontinued ■ Part is available until supply is exhausted ▲ Not sold separately

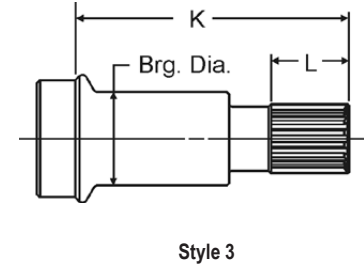
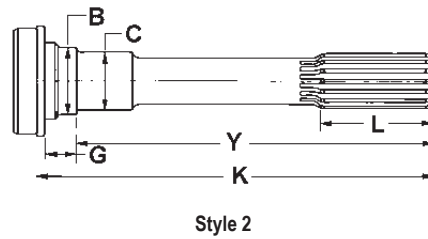
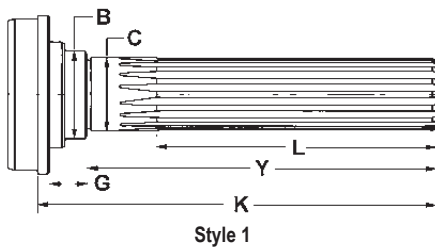


Important: See Safety Information in General Information Section (J300P-GI)

SPLINED MIDSHIP TUBE SHAFTS

Slip Yoke Design For Use with Outboard Slip Yokes

J300P-7



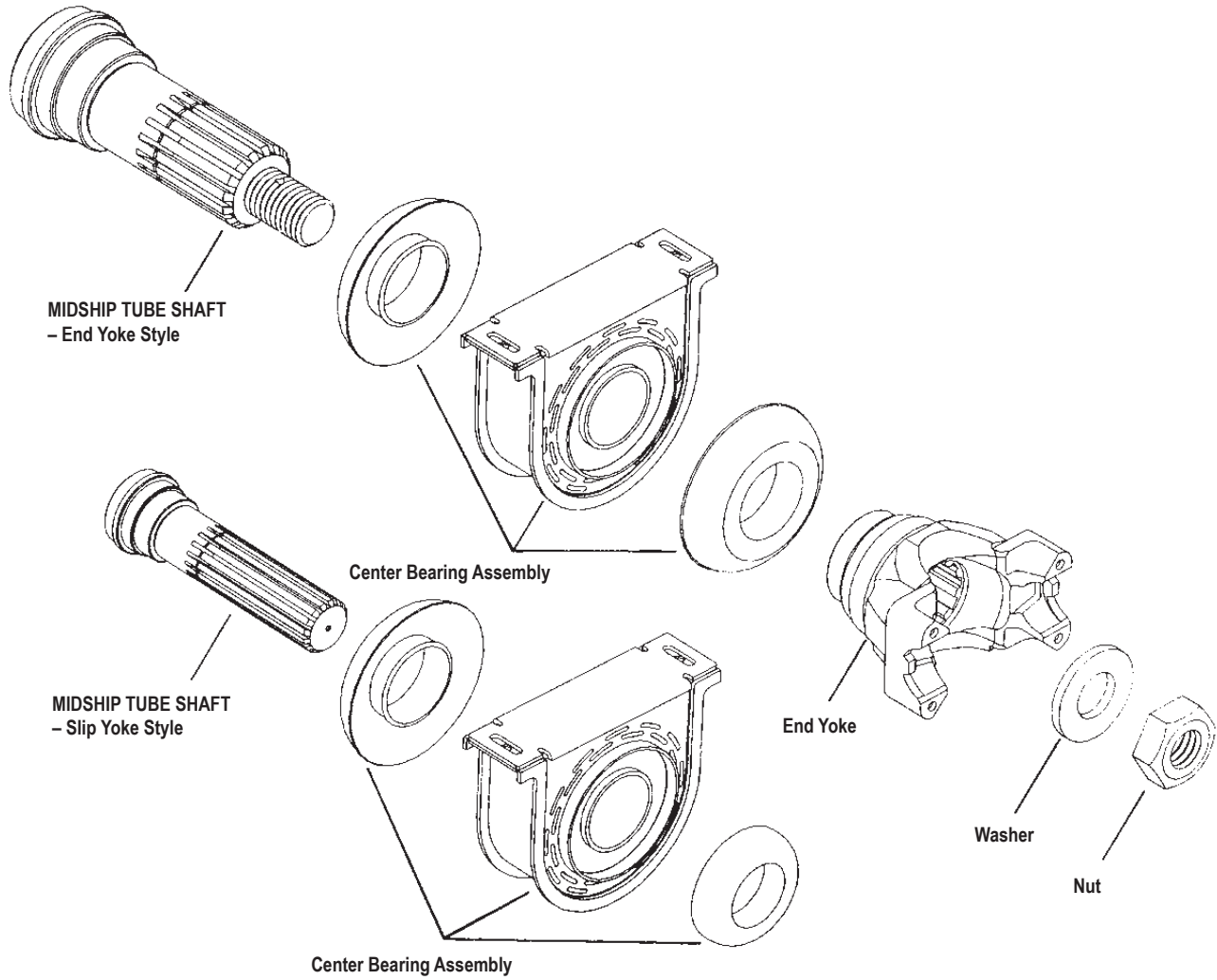
Note: Spline is Glidecote except where footnoted.

Fits Tube		Y	K	S t y l e	L	B	G	Midship Tube Shaft Part Number
Tube Diameter	Wall Thickness	End of Spline to Bearing Shoulder	End of Spline to Point of Weld		Length of Spline	Shoulder Diameter	Length of Shoulder	
1.5620-23 Based On 24 Spline (Continued)								
1.575 Bearing Diameter (C)								
3.500	.083	8.750	9.875	2	3.000	1.812	.880	3-53-2571 <i>Use boot 212007X, order separate</i>
1.5620-23 Based On 24 Spline (Continued)								
1.575 Bearing Diameter (C)								
4.000	.083	7.531	8.331	2	3.500	1.803	.555	55-53-21• <i>May use boot 212094X, order separate</i>
4.000	.083	8.689	9.468	2	3.000	1.809	.540	5008003
4.000	.083	8.704	9.500	2	3.500	1.803	.555	55-53-31• <i>May use boot 212094X, order separate</i>
1.7500-16 Spline								
1.772 Bearing Diameter (C)								
3.500	.095	7.469	8.562	1	5.938	2.188	.812	4-53-61
4.000	.083	7.469	8.562	1	5.938	2.188	.812	4-53-101
1.7500-34 Spline								
2.185 Bearing Diameter (C)								
3.500	.134	—	7.000	3	2.031	—	—	5-53-331• <i>Has .625-18 thread at spline end</i>
1.7520-26 Based On 27 Spline								
1.772 Bearing Diameter (C)								
3.500	.095	8.902	9.693	2	3.500	2.154	.554	70-53-51 <i>Use boot 212146X, order separate</i>
4.000	.083	8.102	8.902	2	3.500	2.154	.554	70-53-11 <i>Use boot 212146X, order separate</i>
4.000	.083	8.902	9.693	2	3.500	2.154	.554	70-53-21■ <i>Use boot 212146X, order separate</i>
1.9370-29 Based On 30 Spline								
1.968 Bearing Diameter (C)								
4.000	.095	8.720	9.862	2	4.000	2.441	—	100-53-11■ <i>Use boot 212146X, order separate</i>
4.000	.095	9.520	10.661	2	4.000	2.441	—	100-53-21 <i>Use boot 212146X, order separate</i>
1.9370-30 Involute Spline								
1.968 Bearing Diameter (C)								
4.000	.095	8.906	10.000	2	4.000	2.438	.812	90-53-21 <i>Mates with 90-3-41X</i>
4.000	.134	8.906	10.000	2	4.000	2.438	.812	90-53-41
1.9830-31 Involute Spline								
2.436 Bearing Diameter (C)								
3.500	.134	—	9.540	3	2.810	2.400	—	70-53-81▲ <i>.268 Keyway. Metric Thrd. Used w/pillow block</i>

• Part is discontinued ■ Part is available until supply is exhausted ▲ Not sold separately



Exploded View



Tube Shaft Part Number	Center Bearing Number	End Yoke/ Flange Number	Series	Washer	Nut	Bolt	Cotter Pin
100-53-11	212142-1X	-	-	-	-	-	-
100-53-21	212142-1X	-	-	-	-	-	-
100-53-21	212153-1X	-	-	-	-	-	-
140-53-11	210121-1X	140-4-11-1	SPL140	230123-6	250-74-11	-	-
140-53-11	210881-1X	140-4-11-1	SPL140	230123-6	250-74-11	-	-
140-53-11	212156-1X	140-4-11-1	SPL140	230123-6	250-74-11	-	-
140-53-21	210661-1X	140-4-1011-1	SPL140	230123-6	250-74-11	-	-
140-53-21	210875-1X	140-4-1011-1	SPL140	230123-6	250-74-11	-	-
140-53-31	210121-1X	140-4-11-1	SPL140	230123-6	250-74-11	-	-
140-53-41	210121-1X	140-1-15	SPL140	230123-6	250-74-11	-	-
140-53-41	210881-1X	140-1-15	SPL140	230123-6	250-74-11	-	-
140-53-41	210881-1X	140-1-25	SPL140	230123-6	250-74-11	-	-
250-53-11	210661-1X	170-4-1271-1	SPL170	230123-6	250-74-11	-	-
250-53-11	210661-1X	250-1-15	SPL250	230123-6	250-74-11	-	-
250-53-11	210661-1X	250-4-21-1	SPL250	230123-6	250-74-11	-	-
250-53-11	210875-1X	250-1-11	SPL250	230123-6	250-74-11	-	-
250-53-11	210875-1X	250-1-15	SPL250	230123-6	250-74-11	-	-
250-53-11	210875-1X	250-4-21-1	SPL250	230123-6	250-74-11	-	-
250-53-11	212066-1X	250-4-21-1	SPL250	230123-6	250-74-11	-	-
2-53-1011	211590-1X	2-4-7021-1	1310	230123-12	231781	-	-
2-53-1021X	211590-1X	2-4-7021-1	1310	230123-12	231781	-	-
2-53-1051	211574-1X	2-4-7201-1X	1310	230123-12	231781	-	-
2-53-1051	211589-1X	2-4-7291-1X	1310	230123-12	231781	-	-
2-53-1051	211938-1X	2-4-7291-1X	1310	230123-12	231781	-	-
2-53-1061X	211574-1X	2-4-7291-1X	1310	230123-12	231781	-	-
2-53-1071	211502X	2-4-6411-1X	1210	230123-12	231781	-	-
2-53-1081X	211502X	2-4-6411-1X	1310	230123-12	231781	-	-
2-53-1121	211618X	2-4-7281-1X	1310	230123-12	231781	-	-
2-53-1131	211579-1X	-	-	-	-	-	-
2-53-1141X	211589-1X	2-4-7291-1X	1310	230123-12	231781	-	-
2-53-1141X	211938-1X	2-4-7291-1X	1310	230123-12	231781	-	-
2-53-1151	210090-1X	2-4-2671	1310	-	16-74-101	-	-
2-53-1151	210090-1X	2-4-2671-1	1310	-	16-74-101	-	-
2-53-1161	211406X	2-4-6181-1X	1310	230123-6	231781	-	-
2-53-1161	211406X	2-4-7501-1X	1310	230123-6	231781	-	-
2-53-1171X	211406X	2-4-7501-1X	1310	230123-12	231781	-	-
2-53-1191	210090-1X	2-4-2671	1310	-	16-74-101	-	-
2-53-1191	210090-1X	2-4-2671-1	1310	-	16-74-101	-	-
2-53-1191	211134X	2-4-2671	1310	-	16-74-101	-	-
2-53-1191	211134X	2-4-2671-1	1330	-	16-74-101	-	-
2-53-1191	211161X	2-4-4071	1310	-	16-74-101	-	-
2-53-1191	211173X	2-4-5671	1330	-	16-74-101	-	-
2-53-1191	211569-1X	2-4-2671-1	1310	-	16-74-101	-	-
2-53-121	210088-1X	-	-	-	-	-	-
2-53-1211	210090-1X	2-4-2671	1310	-	16-74-101	-	-
2-53-1211	210090-1X	2-4-2671-1	1310	-	16-74-101	-	-
2-53-1211	211757-1X	2-4-2671	1310	-	16-74-101	-	-
2-53-1271X	211747-1X	2-4-7571-1X	1310	230123-12	231781	-	-
2-53-1311	211750-1X	2-4-7561X	1310	230123-14	10-74-101	-	-
2-53-1321	211872-1X	2-4-7021-1	1310	230123-12	231781	-	-
2-53-1331	211590-1X	2-4-7021-1	1310	230123-12	231781	-	-
2-53-1351	211872-1X	2-4-7711	1310	230123-12	231781	-	-
2-53-1351	211872-1X	2-4-7021-1	1310	230123-12	231781	-	-
2-53-1371	211925-1X	-	-	-	-	-	-
2-53-1371	211986-1X	-	-	-	-	-	-
2-53-1411	212169X	3-4-13611-1	1350	-	16-74-101	-	-
2-53-1411	212169X	3-4-14581-1	1350	-	16-74-101	-	-
2-53-1411	212169X	3-4-5721-1	1350	-	16-74-101	-	-

Note: For detail information on Center Bearings, refer to J300P-9A.



Tube Shaft Part Number	Center Bearing Number	End Yoke/ Flange Number	Series	Washer	Nut	Bolt	Cotter Pin
2-53-1411	212273X	3-4-14581-1	1350	-	16-74-101	-	-
2-53-1411	212275X	3-4-14581-1	1350	-	16-74-101	-	-
2-53-1411	211924X	3-4-5721-1	1350	-	16-74-101	-	-
2-53-1411	211985X	3-4-13611-1	1350	-	16-74-101	-	-
2-53-1411	211985X	3-4-14581-1	1350	-	16-74-101	-	-
2-53-1411	211985X	3-4-5721-1	1350	-	16-74-101	-	-
2-53-1511	5001874	-	1330	-	-	-	-
2-53-1511	212088-1X	-	1330	-	-	-	-
2-53-1571	212165-1X	2-4-8541-1X	1310	230123-14	231781	-	-
2-53-1571	212166-1X	2-4-8541-1X	1310	230123-14	231781	-	-
2-53-331	210090-1X	2-4-2671	1310	230123-11	-	500412-11	-
2-53-361	210090-1X	2-4-2671	1310	230123-11	-	500412-11	-
2-53-381X	211341X	2-4-6411-1X	1310	230123-12	231781	-	-
2-53-471	211175X	-	-	-	-	-	-
2-53-491	211175X	-	-	-	-	-	-
2-53-501	210088-1X	-	-	-	-	-	-
2-53-501	211175X	-	-	-	-	-	-
2-53-511	211175X	-	-	-	-	-	-
2-53-531	211175X	-	-	-	-	-	-
2-53-681	211175X	-	-	-	-	-	-
2-53-691	211175X	-	-	-	-	-	-
2-53-711	211130X	-	-	-	-	-	-
2-53-711	211131X	-	-	-	-	-	-
2-53-711	211175X	-	-	-	-	-	-
2-53-901	211431X	2-4-6191	1210	230123-12	231781	-	-
2-53-901	211431X	2-4-6191-1	1210	230123-12	231781	-	-
2-53-901	211748-1X	2-4-6731-1X	1210	230123-12	231781	-	-
2-53-921	211415X	-	-	-	-	-	-
2-53-991	211478-1X	2-4-6731-1X	1210	230123-12	231781	-	-
2-54-351X	211406X	2-4-6181-1X	1310	230123-12	231781	-	-
2-54-351X	211406X	2-4-7501-1X	1310	230123-12	231781	-	-
2-54-361	211406X	2-4-6181-1X	1310	230123-12	231781	-	-
2-54-361	211406X	2-4-7501-1X	1310	230123-12	231781	-	-
2-54-371	211502X	2-4-8211-1X	1310	230123-12	231781	-	-
2-54-381X	211505X	2-4-6411-1X	1310	230123-12	231781	-	-
3-53-1031	210866-1X	-	-	-	-	-	-
3-53-1041	210866-1X	-	-	-	-	-	-
3-53-1121	210866-1X	-	-	-	-	-	-
3-53-1131	210866-1X	-	-	-	-	-	-
3-53-1181	210370-1X	-	-	-	-	-	-
3-53-1191	210391-1X	-	-	-	-	-	-
3-53-1191	210433-1X	-	-	-	-	-	-
3-53-1211	210866-1X	-	-	-	-	-	-
3-53-1301	210370-1X	-	-	-	-	-	-
3-53-1311	210866-1X	-	-	-	-	-	-
3-53-1351	210370-1X	-	-	-	-	-	-
3-53-1361	210370-1X	-	-	-	-	-	-
3-53-1391	210088-1X	-	-	-	-	-	-
3-53-1391	211200X	-	-	-	-	-	-
3-53-1481	210866-1X	-	-	-	-	-	-
3-53-1531	210866-1X	-	-	-	-	-	-
3-53-1551	211359X	-	-	-	-	-	-
3-53-1551	211499-1X	-	-	-	-	-	-
3-53-1551	211793-1X	-	-	-	-	-	-
3-53-1561	210866-1X	-	-	-	-	-	-
3-53-1781	210873-1X	3-4-6561	1410	-	16-74-101	-	-
3-53-1781	210873-1X	3-4-6901-1	1410	-	16-74-101	-	-
3-53-1781	210873-1X	3-4-6561-1	1410	-	16-74-101	-	-

Note: For detail information on Center Bearings, refer to J300P-9A.



Important: See Safety Information in General Information Section (J300P-GI)

Tube Shaft Part Number	Center Bearing Number	End Yoke/ Flange Number	Series	Washer	Nut	Bolt	Cotter Pin
3-53-1781	210873-1X	3-4-6631X	1410	-	16-74-101	-	-
3-53-1791	210873-1X	3-4-6561	1410	-	16-74-101	-	-
3-53-1791	210873-1X	3-4-6901-1	1410	-	16-74-101	-	-
3-53-1791	210873-1X	3-4-6901	1410	-	16-74-101	-	-
3-53-1791	210873-1X	3-4-6561-1	1410	-	16-74-101	-	-
3-53-1791	210873-1X	3-4-6631X	1410	-	16-74-101	-	-
3-53-1801	210873-1X	3-4-6561	1410	-	16-74-101	-	-
3-53-1801	210873-1X	3-4-6561-1	1410	-	16-74-101	-	-
3-53-1801	210873-1X	3-4-6561-2	1410	-	16-74-101	-	-
3-53-1801	210873-1X	3-4-6901	1480	-	16-74-101	-	-
3-53-1801	210873-1X	3-4-6901-1	1480	-	16-74-101	-	-
3-53-181	210088-1X	-	-	-	-	-	-
3-53-1811	210391-1X	3-4-2941	1410	-	16-74-101	-	-
3-53-1821	210391-1X	3-4-2941	1410	-	16-74-101	-	-
3-53-1821	210391-1X	3-4-2941-1	1410	-	16-74-101	-	-
3-53-1821	210391-1X	3-4-4421X	1480	-	16-74-101	-	-
3-53-1831	210391-1X	3-4-2941	1410	-	16-74-101	-	-
3-53-1831	210391-1X	3-4-4421X	1480	-	16-74-101	-	-
3-53-1831	210391-1X	4-1-4451	1550	-	16-74-101	-	-
3-53-1831	210391-1X	4-4-2051	1550	-	16-74-101	-	-
3-53-1881	210391-1X	3-1-4631	1410	-	16-74-101	-	-
3-53-1891	210873-1X	3-4-6561	1410	-	16-74-101	-	-
3-53-1891	210873-1X	3-4-6561-1	1410	-	16-74-101	-	-
3-53-1891	210873-1X	3-4-6561-2	1410	-	16-74-101	-	-
3-53-1891	210873-1X	3-4-6631X	1410	-	16-74-101	-	-
3-53-1921	211453X	3-4-10551-1	1410	98-216	16-74-11	-	500024-11
3-53-1951	211359X	-	-	-	-	-	-
3-53-1951	211499X	-	-	-	-	-	-
3-53-1951	211793-1X	-	-	-	-	-	-
3-53-1951	211848-1X	-	-	-	-	-	-
3-53-1951	211963-1X	-	-	-	-	-	-
3-53-1981	211359X	-	-	-	-	-	-
3-53-2011	211793-1X	-	-	-	-	-	-
3-53-2061	210873-1X	3-4-6561	-	-	16-74-101	-	-
3-53-2061	210873-1X	3-4-11451-1	-	-	16-74-101	-	-
3-53-2061	210873-1X	3-4-6561-1	-	-	16-74-101	-	-
3-53-2061	210873-1X	3-4-6561-2	-	-	16-74-101	-	-
3-53-211	211175X	-	-	-	-	-	-
3-53-2171	232429	3-4-12271-1M	1480	232430	-	232431	-
3-53-2181	211848-1X	-	-	-	-	-	-
3-53-2181	211963-1X	-	-	-	-	-	-
3-53-2281	211359X	-	-	-	-	-	-
3-53-2281	211499X	-	-	-	-	-	-
3-53-2281	211848-1X	-	-	-	-	-	-
3-53-2281	211963-1X	-	-	-	-	-	-
3-53-2281	212093-2X	-	-	-	-	-	-
3-53-2291	211793-2X	-	-	-	-	-	-
3-53-2301	211966-1X	3-4-7391-1X	1480	-	16-74-101	-	-
3-53-2301	212053-1X	3-4-13881-1	1350	-	16-74-101	-	-
3-53-2301	212053-1X	3-4-13871-1	1410	-	16-74-101	-	-
3-53-2301	212053-1X	3-4-13921-1	1480	-	16-74-101	-	-
3-53-2331	211359X	-	-	-	-	-	-
3-53-2331	211499X	-	-	-	-	-	-
3-53-2331	211793-1X	-	-	-	-	-	-
3-53-2351	210433-1X	-	-	-	-	-	-
3-53-2361	212004-1X	3-4-13721-1X	1410	-	16-74-101	-	-
3-53-2381	212028-1X	-	-	-	-	-	-

Note: For detail information on Center Bearings, refer to J300P-9A.



Tube Shaft Part Number	Center Bearing Number	End Yoke/ Flange Number	Series	Washer	Nut	Bolt	Cotter Pin
3-53-2381	212030-1X	-	-	-	-	-	-
3-53-2381	212031-1X	-	-	-	-	-	-
3-53-2381	212032-1X	-	-	-	-	-	-
3-53-2441	212030-1X	-	-	-	-	-	-
3-53-2441	212031-1X	-	-	-	-	-	-
3-53-2441	212177-1X	-	-	-	-	-	-
3-53-2451	211359X	-	-	-	-	-	-
3-53-2451	211499X	-	-	-	-	-	-
3-53-2451	212020-1X	-	-	-	-	-	-
3-53-2471	211359X	-	-	-	-	-	-
3-53-2541	211966-1X	3-4-14621-1	1350	-	16-74-101	-	-
3-53-2541	211966-1X	3-4-14591-1	1410	-	16-74-101	-	-
3-53-2541	212053-1X	3-4-14621-1	1350	-	16-74-101	-	-
3-53-2541	212053-1X	3-4-14591-1	1410	-	16-74-101	-	-
3-53-2571	211499X	-	-	-	-	-	-
3-53-411	210433-1X	-	-	-	-	-	-
3-53-421	210119-1X	3-4-3331X	1480	-	16-74-101	-	-
3-53-421	210119-1X	4-4-2031	1550	-	16-74-101	-	-
3-53-421	210144-1X	3-4-3331X	1480	-	16-74-101	-	-
3-53-441	210140-1X	-	-	-	-	-	-
3-53-451	210433-1X	-	-	-	-	-	-
3-54-611	210367-1X	3-4-178-1X	1350	-	16-74-101	-	-
3-54-611	210367-1X	3-4-2851X	1410	-	16-74-101	-	-
3-54-611	210367-2X	3-4-178-1X	1350	-	16-74-101	-	-
4-53-101	210084-2X	-	-	-	-	-	-
4-53-101	210207-1X	-	-	-	-	-	-
4-53-111	210209-1X	-	1550	-	-	-	-
4-53-131	NO DATA	-	-	-	-	-	-
4-53-261	210084-2X	4-4-4211	1550	-	16-74-101	-	-
4-53-261	210084-2X	4-4-4211-1	1550	-	16-74-101	-	-
4-53-271	210084-2X	4-4-4211	1550	-	16-74-101	-	-
4-53-271	210084-2X	4-4-4211-1	1550	-	16-74-101	-	-
4-53-301	-	4-4-7101	1550	-	-	-	-
4-53-341	210084-2X	4-4-6031-1	1550	-	231502	-	-
4-53-361	210391-1X	4-4-2051	1550	-	16-74-101	-	-
4-53-361	210391-1X	4-4-2051-1	1550	-	16-74-101	-	-
4-53-401	210084-2X	4-4-4211	1550	-	16-74-101	-	-
4-53-401	210084-2X	4-4-4211-1	1550	-	16-74-101	-	-
4-53-401	210084-2X	4-4-4211-2	1550	-	16-74-101	-	-
4-53-461	4-4-2051-1	-	-	-	-	-	-
4-53-501	232373	4-4-7101-1M	1550	-	-	-	-
4-53-531	210207-1X	-	1480	-	-	-	-
4-53-61	210084-2X	-	-	-	-	-	-
4-53-61	210207-1X	-	-	-	-	-	-
4-53-91	211118X	4-4-2031	1550	-	16-74-101	-	-
4-53-91	211118X	4-4-2031	1550	-	16-74-101	-	-
5-53-111	210084-2X	5-1-6001	1610	-	231502	-	-
5-53-111	210084-2X	5-4-1721	1610	-	231502	-	-
5-53-131	210084-2X	5-4-1721	1610	-	231502	-	-
5-53-141	210084-2X	5-1-6001	1610	-	231502	-	-
5-53-141	210084-2X	5-4-1721	1610	-	231502	-	-
5-53-141	210084-2X	5-4-1721-1	1610	-	231502	-	-
5-53-141	210084-2X	5-4-2111	1650	-	231502	-	-
5-53-171	NO DATA	-	-	-	-	-	-
5-53-191	210084-2X	5-1-6001	1610	-	231502	-	-
5-53-191	210084-2X	5-4-1721	1610	-	231502	-	-
5-53-191	210084-2X	5-4-1721-1	1610	-	231502	-	-

Note: For detail information on Center Bearings, refer to J300P-9A.



Important: See Safety Information in General Information Section (J300P-GI)

Tube Shaft Part Number	Center Bearing Number	End Yoke/ Flange Number	Series	Washer	Nut	Bolt	Cotter Pin
5-53-231	210121-1X	5-4-4721	1610	-	231502	-	-
5-53-261	210084-2X	5-4-7171-1	1610	-	231502	-	-
5-53-271	210084-2X	5-4-7171-1	1610	-	231502	-	-
5-53-271	210084-2X	90-4-11-1	SPL90	-	231502	-	-
5-53-301	231995	4-4-6461-1	1550	-	-	-	-
5-53-301	231995	5-4-8071-1	1610	-	-	-	-
5-53-341	232634	6-4-9161-1M	1710	232374	-	232375	-
5-53-341	232634	6-4-9761-1M	1710	232374	-	232375	-
55-53-11	212028-1X	-	-	-	-	-	-
55-53-11	212031-1X	-	-	-	-	-	-
55-53-11	212032-1X	-	-	-	-	-	-
55-53-11	212144-1X	-	-	-	-	-	-
55-53-21	212031-1X	-	-	-	-	-	-
55-53-21	212144-1X	-	-	-	-	-	-
55-53-31	212031-1X	-	-	-	-	-	-
55-53-41	212031X	55-4-11-1	SPL55	230123-15	16-74-101	-	-
55-53-51	212031-1X	-	SPL55	-	-	-	-
6.3-53-21	210661-1X	6-4-7481-1	1710	-	231502	-	-
6.3-53-21	210661-1X	6.3-4-821-1	1760	-	231502	-	-
6.5-53-111	-	6.5-4-2151	1810	231296	231297	-	-
6.5-53-171	210661-1X	6.5-4-3591-1	1810	230123-6	231502	-	-
6.5-53-171	210875-1X	6.3-4-821-1	1760	230123-6	20-74-91	-	-
6.5-53-181	210661-1X	6.5-4-3591-1	1810	230123-6	231502	-	-
6.5-53-181	210875-1X	6.5-4-3591-1	1810	230123-6	20-74-91	-	-
6.5-53-191	210661-1X	6.3-1-25	1810	230123-6	20-74-91	-	-
6.5-53-21	210661-1X	6.5-4-1891	1810	230123-6	231502	-	-
6.5-53-21	210661-1X	6.5-4-1891-1	1810	230123-6	231502	-	-
6.5-53-21	210875-1X	6.5-4-1891	1810	230123-6	231502	-	-
6.5-53-21	210875-1X	6.5-4-1891-1	1810	230123-6	231502	-	-
6.5-53-51	210661-1X	6.5-4-1891	1810	230123-6	231502	-	-
6.5-53-51	210661-1X	6.5-4-1891-1	1810	230123-6	231502	-	-
6.5-53-51	210661-1X	8-4-851 (WB)	1880	230123-6	231502	-	-
6.5-53-51	210875-1X	6.5-4-1891-1	1760	230123-6	231502	-	-
6.5-53-51	210875-1X	6.5-1-1811	1810	230123-6	231502	-	-
6.5-53-91	210661-1X	6-4-5071-1X	1710	230123-6	20-74-91	-	-
6.5-53-91	210661-1X	6-4-5071X	1710	230123-6	20-74-91	-	-
6.5-53-91	210661-1X	6.5-1-1811	1810	230123-6	20-74-91	-	-
6.5-53-91	210661-1X	6.5-4-1891	1810	230123-6	20-74-91	-	-
6.5-53-91	210661-1X	6.5-4-1891-1	1810	230123-6	20-74-91	-	-
6.5-53-91	210661-1X	8-4-851(WB)	1810	230123-6	20-74-91	-	-
6.5-53-91	210875-1X	6-4-5071-1X	1710	230123-6	20-74-91	-	-
6.5-53-91	210875-1X	6-4-5071X	1710	230123-6	20-74-91	-	-
6.5-53-91	210875-1X	6.3-4-161	1760	230123-6	231502	-	-
6.5-53-91	210875-1X	6.3-4-161-1	1760	230123-6	231502	-	-
6.5-53-91	210875-1X	6.5-1-1811	1810	230123-6	231502	-	-
6.5-53-91	210875-1X	6.5-4-1891	1810	230123-6	231502	-	-
6.5-53-91	210875-1X	6.5-4-1891-1	1810	230123-6	231502	-	-
6.5-53-91	210875-1X	8-4-851(WB)	1810	230123-6	231502	-	-
6-53-201	210121-1X	6-1-4641	1710	230123-6	231502	-	-
6-53-201	210121-1X	6-4-1981	1710	230123-6	231502	-	-
6-53-201	210881-1X	6-1-4641	1710	230123-6	231502	-	-
6-53-201	210881-1X	6-4-1981	1710	230123-6	231502	-	-
6-53-211	211594-1X	6-4-2391-1	1710	230123-6	231502	-	-
6-53-241	210121-1X	6-4-1981	1710	230123-6	231502	-	-
6-53-241	210881-1X	6-4-1981	1710	230123-6	231502	-	-
6-53-261	-	6-4-2001	1710	230123-6	231502	-	-
6-53-311	210661-1X	6-4-5071-1X	1710	230123-6	231502	-	-
6-53-311	210661-1X	6-4-5071X	1710	230123-6	231502	-	-

Note: For detail information on Center Bearings, refer to J300P-9A.



Tube Shaft Part Number	Center Bearing Number	End Yoke/ Flange Number	Series	Washer	Nut	Bolt	Cotter Pin
6-53-311	210661-1X	6.3-4-161	1760	230123-6	231502	-	-
6-53-311	210661-1X	6.3-4-161-1	1760	230123-6	231502	-	-
6-53-311	210661-1X	6.5-1-1811	1810	230123-6	231502	-	-
6-53-311	210661-1X	6.5-4-1891	1810	230123-6	231502	-	-
6-53-311	210875-1X	6-4-5071-1X	1710	230123-6	231502	-	-
6-53-311	210875-1X	6-4-5071X	1710	230123-6	231502	-	-
6-53-311	210875-1X	6.3-4-161	1760	230123-6	231502	-	-
6-53-311	210875-1X	6.3-4-161-1	1760	230123-6	231502	-	-
6-53-311	210875-1X	6.5-1-1811	1810	230123-6	231502	-	-
6-53-311	210875-1X	6.5-4-1891	1810	230123-6	231502	-	-
6-53-331	-	6-4-2191	1710	-	500898J	-	-
6-53-411	210121-1X	6-4-7141	1710	230123-6	231502	-	-
6-53-411	210121-1X	6-4-7141-1	1710	230123-6	231502	-	-
6-53-421	210121-1X	6-4-7141	1710	230123-6	231502	-	-
6-53-421	210121-1X	6-4-7141-1	1710	230123-6	231502	-	-
6-53-471	210121-1X	6-4-5071X	1710	230123-6	231502	-	-
70-53-11	211963-1X	-	-	-	-	-	-
70-53-11	212135-1X	-	-	-	-	-	-
70-53-11	212145-1X	-	-	-	-	-	-
70-53-21	212135-1X	-	-	-	-	-	-
70-53-31	212134-1X	70-4-11-1	SPL70	230123-6	20-74-91	-	-
70-53-31	212145X	70-4-11-1	SPL70	230123-6	20-74-91	-	-
70-53-51	212135-1X	-	-	-	-	-	-
70-53-61	212134-1X	70-4-11-1	SPL70	230123-6	20-74-91	-	-
70-53-61	212261-1X	70-4-11-1	SPL70	230123-6	20-74-91	-	-
8-53-41	211759-1X	6.5-4-2131	1810	230123-6	231502	-	-
8-53-61	210748-1X	8-4-351	1880	230123-7	24-74-21	-	500024-16
90-53-11	210084-2X	90-4-11-1	SPL90	-	231502	-	-
90-53-21	211625-1X	-	-	-	-	-	-
90-53-31	210084-2X	90-4-11-1	SPL90	-	231502	-	-
90-53-41	211625-1X	-	-	-	-	-	-

Note: For detail information on Center Bearings, refer to J300P-9A.



Important: See Safety Information in General Information Section (J300P-GI)

1-42-314	2-40-28514	3-40-1611.....5	3-53-244113
1-42-1014	2-40-28715	3-40-16215	3-53-245113
2-40-9714	2-40-28915	3-40-18715	3-53-25419
2-40-10314	2-40-29415	3-40-1911.....5	3-53-257113
2-40-10414	2-42-5814	3-40-19615	3-53-259113
2-40-10714	2-53-12112	3-40-20715	3-53-2371X.....9
2-40-1131.....4	2-53-47112	3-40-20916	3-54-611.....9
2-40-1211.....5	2-53-49112	3-40-21716	4-40-7216
2-40-12215	2-53-50112	3-40-22415	4-40-7416
2-40-12914	2-53-511.....12	3-42-4515	4-40-7616
2-40-15215	2-53-53112	3-53-1919	4-40-7816
2-40-15315	2-53-68112	3-53-211.....12	4-40-8216
2-40-16715	2-53-69112	3-53-411.....13	4-40-8917
2-40-17014	2-53-711.....12	3-53-4219	4-40-9516
2-40-1711.....4	2-53-9018	3-53-44113	4-40-9616
2-40-17414	2-53-92112	3-53-45113	4-40-9816
2-40-17714	2-53-1011.....8	3-53-103113	4-40-9916
2-40-1811.....4	2-53-10518	3-53-104113	4-40-1011.....6
2-40-18414	2-53-10718	3-53-1121.....13	4-40-10216
2-40-18515	2-53-1131.....12	3-53-1131.....13	4-40-10316
2-40-18715	2-53-1151.....9	3-53-1181.....12	4-40-10616
2-40-20214	2-53-1161.....8	3-53-1191.....13	4-53-6114
2-40-20415	2-53-1191.....9	3-53-130112	4-53-10114
2-40-20515	2-53-1211.....9	3-53-1311.....13	4-53-2719
2-40-20915	2-53-1311.....8	3-53-135112	4-53-30111
2-40-2211.....4	2-53-13218	3-53-136112	4-53-33110
2-40-22315	2-53-13318	3-53-137112	4-53-3519
2-40-22414	2-53-13518	3-53-138112	4-53-3619
2-40-23014	2-53-14118	3-53-148113	4-53-4019
2-40-23615	2-53-144112	3-53-153113	4-53-50110
2-40-23814	2-53-1511.....12	3-53-155113	4-53-53113
2-40-24215	2-53-15618	3-53-17819	5-40-4517
2-40-24414	2-53-15718	3-53-17919	5-40-4717
2-40-24514	2-54-3618	3-53-18019	5-40-4916
2-40-24615	2-54-351X.....8	3-53-1811.....9	5-40-5017
2-40-24814	3-40-4815	3-53-18219	5-40-1011.....7
2-40-25015	3-40-1101.....5	3-53-18319	5-40-10317
2-40-25315	3-40-12815	3-53-18919	5-40-10417
2-40-2611.....5	3-40-13815	3-53-195113	5-40-10517
2-40-26315	3-40-1411.....5	3-53-198113	5-40-1101.....7
2-40-26614	3-40-14215	3-53-199112	5-40-1121.....7
2-40-26714	3-40-14315	3-53-2011.....13	5-40-1151.....7
2-40-26814	3-40-14715	3-53-20619	5-40-1181.....7
2-40-26915	3-40-14915	3-53-218113	5-40-1191.....7
2-40-27615	3-40-15015	3-53-228113	5-40-12417
2-40-27814	3-40-1511.....5	3-53-229113	5-40-13417
2-40-27914	3-40-15215	3-53-23019	5-53-1119
2-40-28015	3-40-15315	3-53-23219	5-53-1419
2-40-2811.....5	3-40-15516	3-53-23619	5-53-1919
2-40-28414	3-40-15715	3-53-238113	5-53-2619



5-53-271	10	55-53-21	14
5-53-331	14	55-53-31	14
6-40-51	7	55-53-51	13
6-40-61	7	55-53-101	9
6-40-111	7	70-40-21X	6
6-40-181	7	70-40-41X	6
6-40-521	7	70-40-81X	6
6-40-541	7	70-53-11	14
6-40-621	7	70-53-21	14
6-40-631	7	70-53-31	10
6-40-701	7	70-53-51	14
6-40-711	7	70-53-61	9
6-40-741	7	70-53-81	14
6-40-821	7	90-40-11	6
6-40-831	7	90-40-21	6
6-40-891	7	90-40-41	6
6-53-151	10	90-53-11	9
6-53-201	10	90-53-21	14
6-53-211	10	90-53-31	9
6-53-241	10	90-53-41	14
6-53-261	10	100-40-31	6
6-53-271	11	100-40-21X	6
6-53-311	10	100-40-41X	6
6-53-331	10	100-53-11	14
6-53-351	11	100-53-21	14
6-53-411	10	100-53-31	9
6-53-421	10	140-53-11	10
6.3-53-21	11	140-53-21	11
6.5-40-141	7	140-53-31	10
6.5-40-191	7	140-53-41	10
6.5-40-201	7	250-53-11	11
6.5-40-251	7	5001918	4
6.5-53-21	10	5001930	4
6.5-53-51	10	5001931	8
6.5-53-91	10	5002332	8
6.5-53-111	11	5002410	13
6.5-53-171	11	5002972	4
6.5-53-181	11	5003448	12
6.5-53-201	11	5008002	13
8-40-91	7	5008003	14
8-40-101	7	5008004	13
8-53-41	10	6C-40-21X	6
8-53-61	11		
10-40-11	4		
27-40-31	4		
55-40-21X	6		
55-40-41X	6		
55-40-61X	6		
55-40-81X	6		
55-53-11	13		





SPICER[®]

Drivetrain Products

Dana Holding Corporation
Spicer Service Parts
PO Box 321
Toledo, Ohio 43697-0321
1-800-SAY-DANA (729-3262)
www.spicerparts.com

Dana Holding Corporation
Spicer Service Parts - Canada
5095 South Service Road
Beamsville, Ontario LOR 1B0

Dana Holding Corporation
Spicer Service Parts - International
(419) 861-6325