

SPICER[®]



J300P-3
June 2021

Supersedes J300P-3
Released 2018

Driveline Components Catalog

Slip Yoke Assemblies



Driveshaft-style slip yokes, slip flanges, splined sleeves, and more, plus slip yoke assemblies for transmission applications.



Product Information: [SpicerParts.com](https://www.SpicerParts.com) | E-Catalog and parts locator: [DanaAftermarket.com](https://www.DanaAftermarket.com)

How To Use This Catalog

INCLUDED IN THIS CATALOG

Driveshaft Style slip yokes - page 3, Slip Flange - page 13, Splined Sleeves - page 14, Hex, Square and Round Hole - page 16, Transmission-type - page 17.

HOW TO IDENTIFY A PART USING THIS CATALOG

To identify any slip yoke, four pieces of information are required:

1. Determine Series
2. Determine spline O.D.
3. Determine number of teeth
4. Determine length - centerline to end/ face to end / end of spline to weld
5. Determine hub diameter (if a transmission-type slip yoke)

Series and all pertinent series dimensions appear as shown in the sample below:

1100 SERIES	E-2.656 D-.938	USE KIT 5-101X & 5-111X
-------------	----------------	-------------------------

Spline O.D. and number of teeth are found at the beginning of each data section--

1.062-16 Spline

Individual part data is shown following the spline data heading--

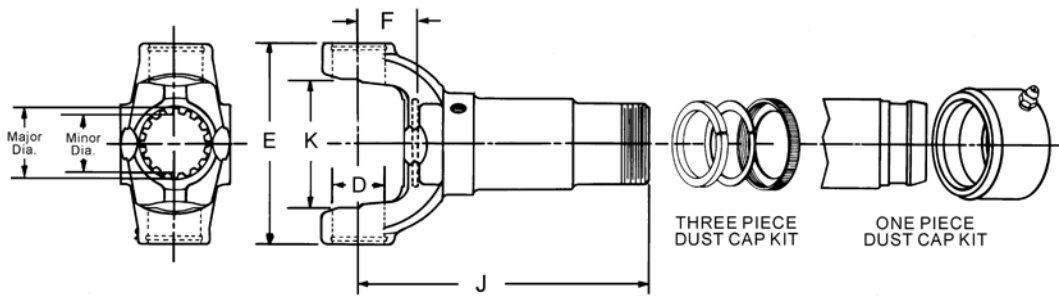
2.875 .938 500174-1 D1A 1-68-14 - SR 1-3-88KX

Footnotes for parts and assemblies that are discontinued, will be discontinued or replaced upon depletion of stock, or not sold separately, are indicated by a symbol next to the part number. Match the symbol to the appropriate status at the bottom of the page. All other footnotes are located immediately below the yoke dimensional data.

IMPORTANT NOTICE: The data listed herein is correct to the best of our knowledge and belief; having been compiled from reliable and official sources of information. However, WE CANNOT ASSUME ANY RESPONSIBILITY for possible error.



Important: See Safety Information in General Information Section (J300P-GI)



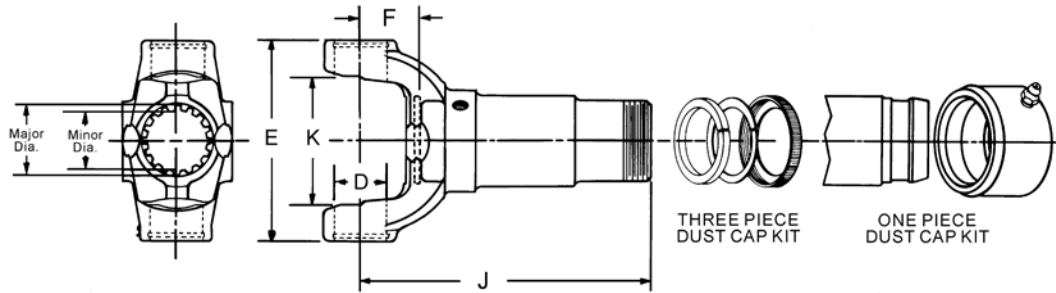
LD & MD DRIVESHAFT STYLE

J C/L to End of Spline	F C/L to Face of Plug	Part of Slip Yoke Assembly			Boot Kit Assy Part # Order Separately	Style	Slip Yoke Assembly Part #	Notes
		Lube Fitting	Dust Cap & Washer Kit	Slip Yoke Plug Number				
SPL55 SERIES E-4.440 D-1.374 USE KIT 5-803X, 5-804X, SPL55-1X, SPL55-2X								
1.587-23 Based On 24 Involute Spline								
7.949	1.732	—	—	500166-26	212094X	SR	55-3-61X	
9.122	1.732	—	—	500166-26	212094X	SR	55-3-81X	
SPL70 SERIES E-5.250 D-1.375 USE KIT 5-808X, 5-809X, SPL70-1X, SPL70X								
1.776-26 Based On 27 Involute Spline								
8.480	1.890	—	—	70-68-18X	212146X	SR	70-3-21X	
9.279	1.890	—	—	70-68-18X	212146X	SR	5009115	5009115 was replaced by 70-3-09115X; Rubber valve in plug
9.279	1.890	—	—	70-68-18X	212146X	SR	70-3-09115X	Rubber valve in plug
9.279	1.890	—	—	70-68-38X	212146X	SR	70-3-41X	
SPL90 SERIES E-5.375 D-1.625 USE KIT SPL90X								
1.939-30 Involute Spline								
8.250	1.750	500174-1	90-86-18	5-68-164	—	SR	90-3-41X	Mates with 90-40-21 and 90-53-21
10.100	1.797	500174-1	90-86-18	5-68-108X	—	SR	90-3-21X	
SPL100 SERIES E-5.380 IN. (HR STYLE 4.958 IN.) D-1.625 USE KIT SPL100-1X								
1.965-29 Based On 30 Involute Spline								
9.681	1.783	—	—	5-68-164	212146X	SR	100-3-41X	
1000 SERIES K-1.500 D-.938 USE KIT 5-170X								
1.000-6 Spline								
5.500	1.500	500174-1	—	—	—	SR	10-3-131X	
1.125-10 Spline								
5.500	—	500174-1	—	—	—	SR	10-3-81X	
1.156-26 Involute Spline								
5.500	1.531	500174-1	D2L	2-68-23	—	SR	10-3-291KX	
1.250-16 Spline								
4.438	1.400	500174-1	D2A	—	—	SR	10-3-121KX	
5.500	1.562	500174-1	D2A	2-68-23	—	SR	10-3-18KX	
1.250-6 Spline								
5.500	1.400	500174-1	—	—	—	SR	10-3-51X	
1100 SERIES E-2.656 D-.938 USE KIT 5-101X, 5-111X								
1.062-16 Spline								
2.875	.938	500174-1	D1A	1-68-14	—	SR	1-3-88KX	
4.312	.938	500174-1	D1A	1-68-14	—	SR	1-3-18KX	

• Part is discontinued ■ Part is available until supply is exhausted ▲ Not sold separately



Important: See Safety Information in General Information Section (J300P-GI)



J C/L to End of Spline	F C/L to Face of Plug	Part of Slip Yoke Assembly			Boot Kit Assy Part # Order Separately	Style	Slip Yoke Assembly Part #	Notes
		Lube Fitting	Dust Cap & Washer Kit	Slip Yoke Plug Number				
1210 SERIES E-2.688 D-1.062 USE KIT 5-443X								
1.219-26 Based On 28 Involute Spline								
5.062	1.250	—	—	500166-20	—	SR	2-3-8811X•	Use boot #40465, clamps #40540-1,-2; ISR style
5.109	1.547	—	—	500166-20	211513X	SR	2-3-9991X	
1.250-14 Based On 16 Spline								
6.344	1.547	—	211256X	500166-20	211513X	SR	2-3-10521X	
6.375	1.250	—	—	500166-20	211344X	SR	2-3-8861X	
1310 SERIES E-3.469 D-1.062 USE KIT 5-153X, 5-785X, 5-810X								
1.250-14 Based On 16 Spline								
6.562	1.438	—	—	500166-20	211344X	SR	2-3-10661X■	
1.250-16 Spline								
3.562	1.000	500174-1	D2B	2-68-23	—	SR	2-3-3951KX	
4.125	1.000	500174-1	D2B	2-68-23	—	SR	2-3-258KX	
4.688	1.000	500174-1	D2A	2-68-23	—	SR	2-3-198KX	
5.000	1.000	500174-1	D2A	2-68-23	—	SR	2-3-1421KX	
6.125	1.000	500174-1	D2F	2-68-23	—	SR	2-3-1461KX	
6.562	1.438	500174-1	D2K	2-68-23	—	SR	2-3-4441KX	
6.562	1.438	500174-1	211256X	2-68-23	—	SR	2-3-8841KX	
1.338-18 Based On 20 Involute Spline								
6.724	1.417	—	211121X	500166-22	—	SR	2-3-15101X	
7.360	1.500	—	—	500166-22	212094X	SR	2-3-15941X	
1.375-15 Based On 16 Spline								
6.000	1.062	—	—	500166-22	211916X	SR	2-3-10411X	
6.688	1.062	500174-1	211121X	2-68-143	—	SR	2-3-7661KX	
6.690	1.062	—	—	2-68-28X	—	SR	2-3-10021X	Relief valve in plug
6.724	1.417	—	—	500166-22	211916X	SR	2-3-12881X	
6.812	1.250	—	—	500166-22	211932X	SR	2-3-11351X•	
7.875	1.500	—	—	500166-22	211916X	SR	2-3-12421X	
1.375-16 Spline								
3.750	1.000	500174-1	D2C	3-68-23	—	SR	2-3-178KX	
4.188	1.000	500174-1	D2C	3-68-23	—	SR	2-3-348KX	
5.375	1.000	—	—	2-68-28X	—	SR	2-3-9031X▲	500174-1 lube fit. & D2M dustcap, ordr sep.; Rel viv in plug
5.375	1.000	500174-1	211121X	3-68-23	—	SR	2-3-12301KX	
5.375	1.000	500174-1	D2C	3-68-23	—	SR	2-3-128KX	
6.000	1.062	500174-1	D2C	2-68-143	—	SR	2-3-4951KX	Use dust cap kit D3E for reverse slip applications

• Part is discontinued ■ Part is available until supply is exhausted ▲ Not sold separately



Important: See Safety Information in General Information Section (J300P-GI)

Slip Yoke Assemblies

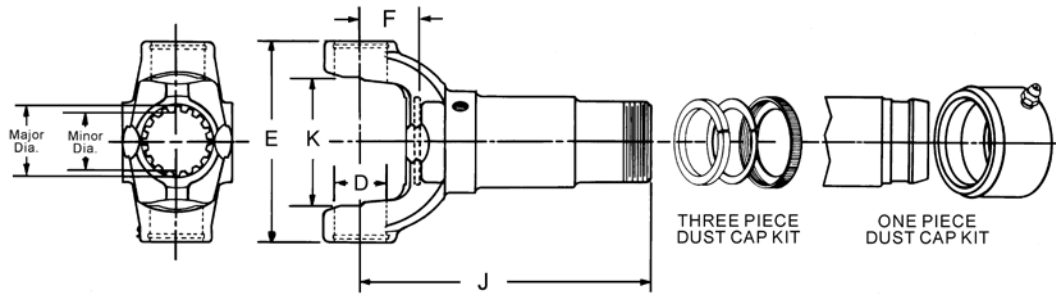


J C/L to End of Spline	F C/L to Face of Plug	Part of Slip Yoke Assembly			Boot Kit Assy Part # Order Separately	Style	Slip Yoke Assembly Part #	Notes
		Lube Fitting	Dust Cap & Washer Kit	Slip Yoke Plug Number				
1310 SERIES (Continued) E-3.469 D-1.062 SE KIT 5-153X, 5-785X, 5-810X								
1.375-16 Spline (Continued)								
6.000	1.062	500174-1	211121X	2-68-143	—	SR	2-3-7981KX	
6.344	1.062	500174-1	D2C	2-68-143	—	SR	2-3-4071KX	
6.471	—	—	—	—	—	CV	2-3-7461X	500174-1 lube fitting & D2M dust cap, order separately
6.750	.875	500174-1	D2M	3-68-23	—	SR	2-3-1931KX	
6.812	1.500	500174-1	211121X	2-68-143	—	SR	2-3-8001KX	
6.875	1.500	500174-1	—	3-68-23	—	SR	2-3-5221X	Use dust cap kit D3E for reverse slip applications
7.875	1.500	500174-1	—	3-68-23	—	SR	2-3-5821X	Use dust cap kit D3E for reverse slip applications
7.875	1.500	500174-1	211121X	2-68-143	—	SR	2-3-8021KX	
1.377-31 Based On Involute 32 Spline								
6.750	.875	500174-1	211121X	2-68-143	—	SR	2-3-10261KX	
6.750	.875	—	—	500166-22	211600X	SR	2-3-10801X•	
1.378-31 Based On 32 Involute Spline								
6.620	1.531	500174-1	D2N	2-68-134	—	SR	2-3-7171KX	
6.812	1.500	500174-1	211411X	2-68-143	—	SR	2-3-10641KX•	
6.812	1.500	—	—	2-68-63	211600X	SR	2-3-9371X•	
1.390-30 Based On 31 Involute Spline								
5.062	1.438	500174-1	211121X	3-68-23	—	SR	2-3-8311X	Spec 4X4 axle yoke w/hole in plug
5.062	1.438	231330	2-86-298	500166-22	—	SR	2-3-8481X	Spec 4X4 axle yoke w/lube fitting in yoke
5.062	1.438	—	—	500166-22	—	SR	2-3-8741X	Use boot #40465, clamps #40540-1,-2; I.S. snap ring style
1.500-16 Spline								
2.906	.656	500174-1	D3F	2-68-64	—	SR	2-3-7691KX	
6.875	1.531	500174-1	D3A	3-68-33	—	SR	2-3-6061KX	
1330 SERIES SR: E-3.875 OTHERS E-3.625, D-1.062 USE KIT 5-213X, 5-790X, 5-812X								
1.284-29 Based On 30 Involute Spline								
6.600	1.100	—	—	500166-22	—	SR	2-3-13221X	Used on driveshaft w/outboard slip
1.338-18 Based On 20 Involute Spline								
6.640	1.000	—	—	500166-22	212094X	SR	2-3-16221X	
6.724	1.102	—	—	500166-22	211932X	SR	2-3-15651X	
1.338-19 Based On 20 Involute Spline								
6.700	1.000	—	—	500166-22	212094X	SR	2-3-13831X	
1.375-14 Based On 16 Spline								
6.720	1.102	—	—	500166-22	211932X	SR	2-3-14331X	
7.039	1.417	—	—	500166-22	211932X	SR	2-3-06028X	
7.039	1.417	—	—	500166-22	211932X	SR	5006028	5006028 was replaced by 2-3-06028X
1.375-15 Based On 16 Spline								
5.410	1.060	—	—	500166-22	211916X	SR	2-3-13571X•	
6.000	1.000	—	—	500166-23	211916X	SR	2-3-8921X	
6.620	1.000	—	—	500166-22	211932X	SR	2-3-11991X•	211121X dust cap & washer kit, order separately
6.625	1.000	—	211121X	2-68-28X	—	SR	2-3-11491KX	
6.625	1.000	—	211121X	500166-22	211932X	SR	2-3-11991KX•	
6.625	1.000	500174-1	211121X	3-68-23	—	SR	2-3-7681KX	
7.500	1.000	500174-1	211121X	3-68-23	211463X	SR	2-3-8941KX•	

• Part is discontinued ■ Part is available until supply is exhausted ▲ Not sold separately



Important: See Safety Information in General Information Section (J300P-GI)



J C/L to End of Spline	F C/L to Face of Plug	Part of Slip Yoke Assembly			Boot Kit Assy Part # Order Separately	Style	Slip Yoke Assembly Part #	Notes
		Lube Fitting	Dust Cap & Washer Kit	Slip Yoke Plug Number				
1330 SERIES (Continued) SR: E-3.875 OTHERS E-3.625, D-1.062 USE KIT 5-213X, 5-790X, 5-812X								
1.375-16 Spline								
6.000	1.000	500174-1	D3E	3-68-23	—	SR	2-3-4681KX	
6.000	1.000	500174-1	211121X	2-68-143	—	SR	2-3-7961KX	
7.500	1.000	500174-1	211121X	2-68-28X	—	SR	2-3-12031KX	
7.500	1.000	—	—	3-68-23	—	SR	2-3-7481X•	Relief valve in plug D2M dust cap & washer kit, order separately
7.500	1.000	500174-1	211121X	3-68-23	—	SR	2-3-8041KX	
1.378-31 Based On 32 Involute Spline								
6.000	1.000	500174-1	211121X	2-68-143	—	SR	2-3-10571KX•	
1.500-15 Based On 16 Spline								
7.312	1.188	—	—	3-68-33	—	SR	2-3-10871X•	Used on driveshaft w/outboard slip
7.500	1.000	500174-1	211158X	3-68-33	—	SR	2-3-8111KX•	
1.500-16 Spline								
8.182	—	—	—	—	—	CV	211391X	Slip Yoke is a ball stud & sleeve assembly; 500174-1 lube fitting & D3A dust cap, order separate
1350 SERIES E-3.875 D-1.188 USE KIT 5-178X OR 5-799X								
1.375-15 Based On 16 Spline								
6.810	1.190	500174-1	211121X	3-68-33	—	SR	3-3-2701KX	
1.375-16 Spline								
5.250	1.188	500174-1	D3E	3-68-33	—	SR	3-3-758KX	
5.688	1.188	500174-1	D2C	3-68-33	—	SR	3-3-1421KX	
5.812	1.188	500174-1	D3G	3-68-33	—	SR	3-3-1501KX	
6.625	1.188	500174-1	D3G	3-68-33	—	SR	3-3-2591KX	
1.377-31 Based On 32 Involute Spline								
6.625	1.188	500174-1	D3F	3-68-33	—	SR	3-3-2471KX	
1.390-30 Based On 31 Involute Spline								
4.810	1.190	—	—	500166-22	—	SR	3-3-3001X	Use boot #40929 & clamps 40540-4 & 40540-3; order separately
5.240	1.190	—	211121X	3-68-23	—	SR	3-3-2861X	1.463-21 Based On 22 Involute Spline
7.310	1.160	—	—	500166-24	212094X	SR	3-3-6381X	Slip yoke barrel is tapered
7.312	1.190	—	—	500166-24	212010X	SR	3-3-6201X	
7.312	1.190	—	—	500166-24	212010X	SR	3-3-6981X	
1.463-21 Based on 22 Involute Spline								
7.310	1.160	—	—	500166-24	212094X	SR	3-3-6381X	Slip yoke barrel is tapered
7.312	1.190	—	—	500166-24	212010X	SR	3-3-6201X	
7.312	1.190	—	—	500166-24	212010X	SR	3-3-6981X	
1.500-14 Based On 16 Spline								
7.312	1.188	—	—	500166-24	212010X	SR	3-3-4781X	
7.312	1.188	—	—	500166-24	211916X	SR	3-3-5461X	

• Part is discontinued ■ Part is available until supply is exhausted ▲ Not sold separately



Important: See Safety Information in General Information Section (J300P-GI)

Slip Yoke Assemblies

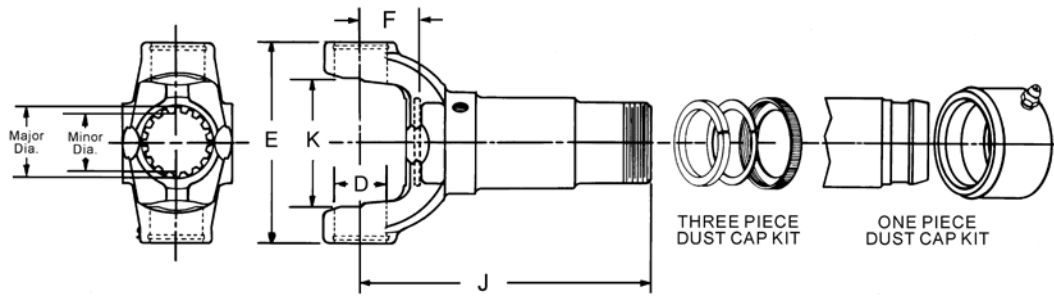


J C/L to End of Spline	F C/L to Face of Plug	Part of Slip Yoke Assembly			Boot Kit Assy Part # Order Separately	Style	Slip Yoke Assembly Part #	Notes
		Lube Fitting	Dust Cap & Washer Kit	Slip Yoke Plug Number				
1350 SERIES (Continued)		E-3.875 D-1.188 USE KIT 5-178X OR 5-799X						
1.500-15 Based On 16 Spline								
6.938	1.188	—	—	500166-24	212010X	SR	3-3-4651X	
7.310	1.188	500174-1	211158X	3-68-33	—	SR	3-3-5921KX	
7.312	1.188	500174-1	211158X	3-68-33	212010X	SR	3-3-2801KX	
1.500-16 Spline								
3.344	1.062	500174-1	D3A	3-68-104	—	SR	3-3-2931KX•	
3.688	1.188	500174-1	D3A	3-68-33	—	SR	3-3-398KX	
3.938	1.188	500174-1	D3A	3-68-33	—	SR	3-3-388KX	
4.938	1.188	500174-1	D3K	3-68-33	—	SR	3-3-5181KX	
5.812	1.312	500174-1	D3A	3-68-33	—	SR	3-3-598KX	
5.812	1.380	—	—	3-68-33	—	SR	3-3-2991X	500174-1 lube fitting & D3A dust cap, order separate
6.719	1.188	500174-1	D3A	3-68-33	—	SR	3-3-1561KX	
7.312	1.188	500174-1	D3A	3-68-33	—	SR	3-3-488KX	
7.930	1.156	—	—	3-68-33	212010X	SR	3-3-3601X	
8.000	1.188	500174-1	D3A	3-68-33	—	SR	3-3-2681KX	One tooth removed for lube passage
1410 SERIES		E-4.438 D-1.188 USE KIT 5-160X OR 5-801X						
1.375-16 Spline								
5.240	1.160	—	D3G	—	—	SR	3-3-4421X	500174-1 lube fitting, order separate
5.250	1.156	500174-1	D3E	3-68-33	—	SR	3-3-788KX	
5.812	1.156	500174-1	D3G	3-68-33	—	SR	3-3-1481KX	
1.463-21 Based On 22 Involute Spline								
7.280	1.160	—	—	500166-24	212010X	SR	3-3-6611X	Used on driveshaft w/outboard slip
7.280	1.160	—	—	500166-24	212010X	SR	3-3-6771X	
7.280	1.160	—	—	500166-24	211503X	SR	3-3-6791X	w/5.300" OD dampener
7.310	1.160	—	—	500166-24	212010X	SR	3-3-08019X	
7.310	1.160	—	—	500166-24	212094X	SR	3-3-6341X	
7.310	1.160	—	—	500166-24	212010X	SR	5008019	5008019 was replaced by 3-3-08019X
7.311	1.161	—	—	500166-24	212094X	SR	3-3-6701X	
1.500-14 Based On 16 Spline								
7.281	1.156	—	—	500166-24	212010X	SR	3-3-4871X	
7.281	1.156	—	—	500166-24	212010X	SR	3-3-5491X	
8.562	1.340	—	—	500166-24	212010X	SR	3-3-6831X	
1.500-15 Based On 16 Spline								
7.281	1.156	500174-1	211158X	3-68-33	—	SR	3-3-5411KX	
7.812	1.344	500167-2	D3A	3-68-18X	—	SR	3-3-748KX	Part has wide tooth and relief valve in welch plug.
8.562	1.344	500174-1	D3F	3-68-63	—	SR	3-3-768KX	Part has wide tooth, mates w/3-40-531
1.500-16 Spline								
3.906	1.156	—	—	3-68-33	—	SR	3-3-3381X	Use dust cap 211158X, order separate
3.906	1.156	500174-1	D3A	3-68-33	—	SR	3-3-468KX	
4.344	1.156	—	D3F	3-68-33	—	SR	3-3-3311KX	
4.410	1.160	—	—	3-68-33	—	SR	3-3-3461X	500174-1 lube fitting & D2M dust cap, order separately
5.250	1.156	500174-1	D3K	3-68-33	—	SR	3-3-2041KX	
5.250	1.160	—	—	3-68-334	—	SR	3-3-3401X	500174-1 lube fitting & D2M dust cap, order separately
6.500	1.156	500174-1	D3A	3-68-33	—	SR	3-3-118KX	

• Part is discontinued ■ Part is available until supply is exhausted ▲ Not sold separately



Important: See Safety Information in General Information Section (J300P-GI)



J C/L to End of Spline	F C/L to Face of Plug	Part of Slip Yoke Assembly			Boot Kit Assy Part # Order Separately	Style	Slip Yoke Assembly Part #	Notes
		Lube Fitting	Dust Cap & Washer Kit	Slip Yoke Plug Number				
1410 SERIES (Continued) E-4.438 D-1.188 USE KIT 5-160X OR 5-801X								
1.500-16 Spline (Continued)								
6.688	1.344	500174-1	D3B	3-68-33	—	SR	3-3-798KX	
7.812	1.344	500174-1	—	3-68-33	—	SR	3-3-4551X•	
7.812	1.344	500174-1	D3A	3-68-33	—	SR	3-3-508KX	
7.812	1.344	500174-1	211158X	3-68-33	—	SR	3-3-5481KX	
7.812	1.344	—	—	3-68-18X	—	SR	3-3-838X	Use dust cap D3F, order separate; Use lube fitting 500174-1; order separate
8.562	1.344	500174-1	D3J	3-68-113	—	SR	3-3-1831KX	
1.528-23 Involute Spline								
6.810	1.312	—	—	3-68-163	—	SR	3-3-6641X•	Use dust cap 211158X, order separate; 500174-1 lube fitting, order separate
1.562-16 Spline								
6.812	1.312	500174-1	D3H	3-68-163	—	SR	3-3-1701KX	For splined dust cap, use D3J
1.564-22 Based On 24 Involute Spline								
6.720	1.220	—	—	500166-26	212007X	SR	3-3-6041X•	OEM Only
1.587-23 Based On 24 Involute Spline								
6.720	1.220	—	—	500166-26	212007X	SR	3-3-7001X	
1.605-15 Involute Spline								
5.750	1.344	500174-1	D4G	3-68-163	—	SR	3-3-3871KX	
1.654-20 Involute Spline								
4.812	1.312	—	—	3-68-183	—	SR	3-3-3791X	Hub dia. not ground
1.750-16 Spline								
3.250	1.188	500174-1	D4F	3-68-54	—	SR	3-3-1511KX	
1480 SERIES E-4.438 D-1.375 USE KIT 5-188X, 5-803X OR 5-804X								
1.562-16 Spline								
6.000	1.312	—	—	3-68-163	—	SR	3-3-5141X•	
6.812	1.312	500174-1	D3J	3-68-163	—	SR	3-3-1601KX	
9.500	2.000	500174-1	D3H	3-68-163	—	SR	3-3-1641KX	
1.564-23 Based On 24 Involute Spline								
6.810	1.312	—	—	500166-26	212007X	SR	3-3-6061X	
1.587-23 Based On 24 Involute Spline								
6.810	1.312	—	—	500166-26	212007X	SR	3-3-7021X	
1.784-27 Involute Spline								
3.719	1.109	—	—	3-68-203	—	SR	3-3-3121X	Hub dia. not ground
2.250-10 Spline								
3.719	1.188	500174-1	D3D	3-68-93	—	SR	3-3-1621KX	

• Part is discontinued ■ Part is available until supply is exhausted ▲ Not sold separately



Important: See Safety Information in General Information Section (J300P-GI)

Slip Yoke Assemblies

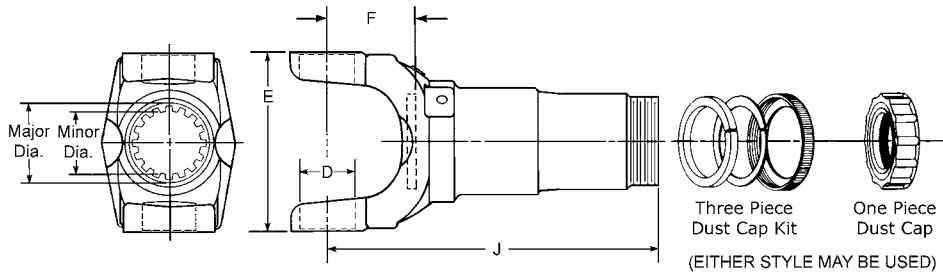


J	F	Part of Slip Yoke Assembly			Boot Kit Assy Part #	Style	Slip Yoke Assembly Part #	Notes
C/L to End of Spline	C/L to Face of Plug	Lube Fitting	Dust Cap & Washer Kit	Slip Yoke Plug Number	Order Separately			
1550 SERIES	E-5.250 D-1.375	USE KIT 5-155X, 5-808X OR 5-809X						
1.750-16 Spline								
5.375	1.375	500168-2	D4M	4-68-143	—	SR	4-3-1751KX	
6.875	1.375	500168-2	D4K	4-68-143	—	SR	4-3-1241KX	
7.562	2.062	500168-2	D4M	4-68-143	—	SR	4-3-2121KX	
8.125	1.375	500168-2	D4J	4-68-143	—	SR	4-3-1411KX	
9.063	2.062	500168-2	D4M	4-68-143	—	SR	4-3-2141KX	
10.062	2.062	500168-2	D4J	4-68-143	—	SR	4-3-1431KX	
2.000-16 Spline								
4.875	1.469	500168-2	5-86-68	4-68-43	—	SR	4-3-1921KX	
8.812	2.730	500167-2	5-86-68	5-68-78X	—	SR	4-3-2041KX	Relief valve in plug
2.500-16 Spline								
3.500	1.125	500168-2	D4L	4-68-74	—	SR	4-3-1261KX	
4.303	1.402	500168-2	D4L	4-68-74	—	SR	4-3-08843KX	
4.303	1.402	—	—	4-68-74	—	SR	5008843	5008843 was replaced by 4-3-08843KX; D4L dust cap kit- order separately

• Part is discontinued ■ Part is available until supply is exhausted ▲ Not sold separately



Important: See Safety Information in General Information Section (J300P-GI)



HD DRIVESHAFT STYLE

J	F	Part of Slip Yoke Assembly			Style	Slip Yoke Assembly Part #	Notes
		C/L to End of Spline	C/L to Face of Plug	Lube Fitting			
1610 SERIES E-5.312 D-1.875 USE KIT 5-279X OR 5-674X							
2.000-16 Spline							
5.406	2.688	—	—	5-68-154	BP	5-3-2911X	500168-2 lube fitting & 5-86-68 dust cap kit, order separate
6.750	2.688	—	—	5-68-174	BP	5-3-398X	
7.812	1.440	500168-2	5-86-68	5-68-174	BP	5-3-108KX	
8.875	1.440	500168-2	5-86-68	5-68-174	BP	5-3-368KX	
9.312	3.188	500168-2	5-86-68	5-68-174	BP	5-3-288KX	
9.812	2.688	500168-2	5-86-68	5-68-174	BP	5-3-128KX•	
10.312	1.938	500168-2	5-86-68	5-68-174	BP	5-3-1411KX	
10.312	2.440	500168-2	5-86-68	5-68-164	BP	5-3-1711KX	
10.812	3.188	500168-2	5-86-68	5-68-164	BP	5-3-2261KX	
10.940	3.688	—	—	5-68-164	BP	5-3-3141KX	
11.938	3.688	500168-2	5-86-68	5-68-164	BP	5-3-3121KX	High angle slip yoke
2.500-16 Spline							
9.500	2.000	500168-2	6.3-86-18	6-68-64	BP	5-3-3101KXM	M8 x 1.00-6H Metric tapped holes in yoke ears
2.676-18 Involute Spline							
3.500	1.250	500168-2	D5C	5-68-33	BP	5-3-168KX	
3.500	1.250	500168-2	—	5-68-33	BP	5-3-3231X	Not threaded for dust cap
4.250	1.250	500168-2	D5C	5-68-33	BP	5-3-198KX	
4.875	1.812	500168-2	D5C	5-68-33	BP	5-3-2971X	
1710 SERIES E-6.094 (6.190-HR STYLE) D-1.938 USE KIT 5-280X OR 5-675X							
2.500-15 Based On 16 Spline							
7.469	1.720	—	—	6-68-48X	BP	6-3-3211X	Relief valve in plug
11.688	2.438	500168-2	6.3-86-18	6-68-38X	BP	6-3-3171KX	Relief valve in plug
12.719	3.219	500168-2	6.3-86-18	6-68-38X	BP	6-3-3541KX	Relief valve in plug
2.500-16 Spline							
6.719	1.719	500168-2	6.3-86-18	6-68-74	BP	6-3-2761KX	
7.469	1.719	500168-2	6.3-86-18	6-68-74	BP	6-3-2741KX	
7.970	1.719	500168-2	6.3-86-18	6-68-74	BP	6-3-2801KX	
8.469	1.719	—	—	6-68-74	BP	6-3-2721X	500168-2 lube ftg. & 6.3-86-18 dust cap kit, order separate
8.844	1.719	500168-2	6.3-86-18	6-68-74	BP	6-3-2631KX	
9.344	2.516	500174-1	6.3-86-18	6-68-74	BP	6-3-3521KX	

• Part is discontinued ■ Part is available until supply is exhausted ▲ Not sold separately



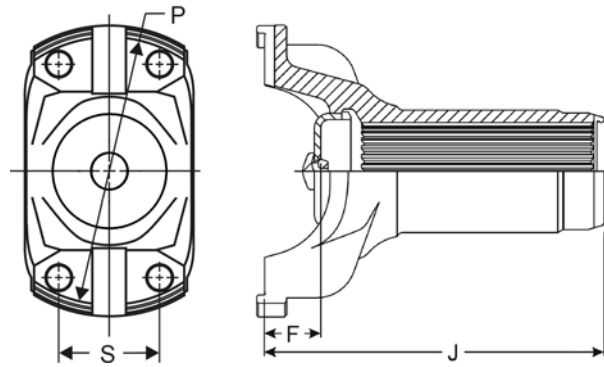
Important: See Safety Information in General Information Section (J300P-GI)

J	F	Part of Slip Yoke Assembly			Style	Slip Yoke Assembly Part #	Notes
		Lube Fitting	Dust Cap & Washer Kit	Slip Yoke Plug Number			
1710 SERIES (Continued)		E-6.094 (6.190-HR STYLE) D-1.938 USE KIT 5-280X OR 5-675X					
2.500-16 Spline (Continued)							
9.594	1.719	500168-2	6.3-86-18	6-68-74	BP	6-3-2671KX	
10.310	2.440	500168-2	6.3-86-18	6-68-38X	BP	6-3-3151KX	Relief valve in plug
10.312	2.440	—	6.3-86-18	6-68-38X	BP	6-3-3611KX●	Relief valve in plug; M10x1.25-6H tapped holes in yoke ears
10.719	3.219	500168-2	6.3-86-18	6-68-64	BP	6-3-3481KX	High angle slip yoke
11.688	2.438	500168-2	6.3-86-18	6-68-64	BP	6-3-2651KX	
11.719	3.219	500168-2	6.3-86-18	6-68-64	BP	6-3-3461KX	High angle slip yoke
11.969	3.219	500168-2	6.3-86-18	6-68-64	BP	6-3-2591KX	6-3-2591KX was replaced by 6-3-3501KX
11.969	3.219	500168-2	6.3-86-18	6-68-64	BP	6-3-3501KX	High angle slip yoke
12.719	3.219	500168-2	6.3-86-18	6-68-64	BP	6-3-3441KX	High angle slip yoke
2.500-9 Based On 10 Spline							
11.000	3.250	500168-2	D6B	6-68-63	BP	6-3-1601KX●	
3.250-18 Involute Spline							
4.125	1.375	500168-2	D6E	6-68-53	BP	6-3-1661KX	
4.875	1.375	500168-2	D6E	6-68-53	BP	6-3-1481KX	
1760 SERIES		E-7.000 (7.094 FOR HR STYLE) D-1.938 USE KIT 5-407X, 5-677X					
2.500-16 Spline							
9.250	2.922	500168-2	6.3-86-18	6-68-74	BP	6.3-3-41KX	Metal, slip yoke plug no. is 6.3-68-14
11.156	2.469	500168-2	6.3-86-18	6-68-64	BP	6.3-3-21KX	
1810 SERIES		E-7.547 (7.643 FOR HR STYLE) D-1.938 USE KIT 5-281X, 5-676X					
3.000-16 Spline							
8.062	2.969	500168-2	6.5-86-38	6.5-68-74	BP	6.5-3-1571KX●	
8.938	1.562	500168-2	6.5-86-38	6.5-68-74	BP	6.5-3-1431KX	
10.250	2.375	500168-2	6.5-86-38	6.5-68-64	BP	6.5-3-1351KX	
11.875	2.375	500168-2	6.5-86-38	6.5-68-64	BP	6.5-3-1371KX	
11.880	3.140	500168-2	—	6.5-68-64	BP	6.5-3-1761X	Use dust cap 6.5-86-38, order separate
3.250-18 Involute Spline							
5.375	1.500	500168-2	D6E	6-68-53	BP	6.5-3-1451KX	
1880 SERIES		E-8.094 D-2.188 USE KIT 5-308X					
3.000-16 Spline							
10.031	2.031	500168-2	6.5-86-38	8-68-13	BP	8-3-391KX	
11.656	2.469	500168-2	6.5-86-38	8-68-13	BP	8-3-411KX	
4.156-24 Involute Spline							
5.031	1.750	500168-2	D9A	8-68-24	BP	8-3-431KX	

● Part is discontinued ■ Part is available until supply is exhausted ▲ Not sold separately



Important: See Safety Information in General Information Section (J300P-GI)



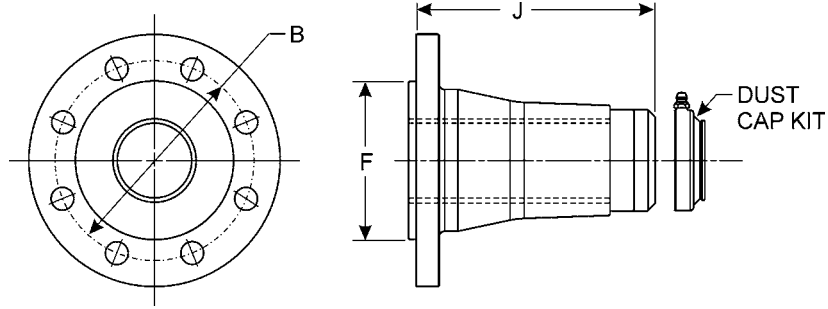
WING BEARING STYLE

J	F	Part of Slip Yoke Assembly			Boot Kit Assy Part # Order Separately	Style	Slip Yoke Assembly Part #	Notes
		Lube Fitting	Dust Cap & Washer Kit	Slip Yoke Plug Number				
5C SERIES	WB STYLE P-4.531	S-1.685 KEYWAY-.563	For HWD x HWD	USE KIT 5-5111X				
Refer to K350 Catalog for other Kit Combinations								
1.564-23 Based On 24 Involute Spline								
6.890	1.437	—	4-86-48	4-68-193	—	WB	5C-3-21X*	Rubber valve in plug, Tapped holes in yoke ears
6C SERIES	WB STYLE P-5.531	S-1.689 KEYWAY-.563	For HWD x HWD	USE KIT 5-6111X				
Refer to K350 Catalog for other Kit Combinations								
1.939-30 Involute Spline								
6.574	1.122	—	4-86-58	5-68-224	—	WB	6C-3-21X	Rubber valve in plug, Tapped holes in yoke ears

• Part is discontinued ■ Part is available until supply is exhausted ▲ Not sold separately HWD = High Wing Drilled



Important: See Safety Information in General Information Section (J300P-GI)



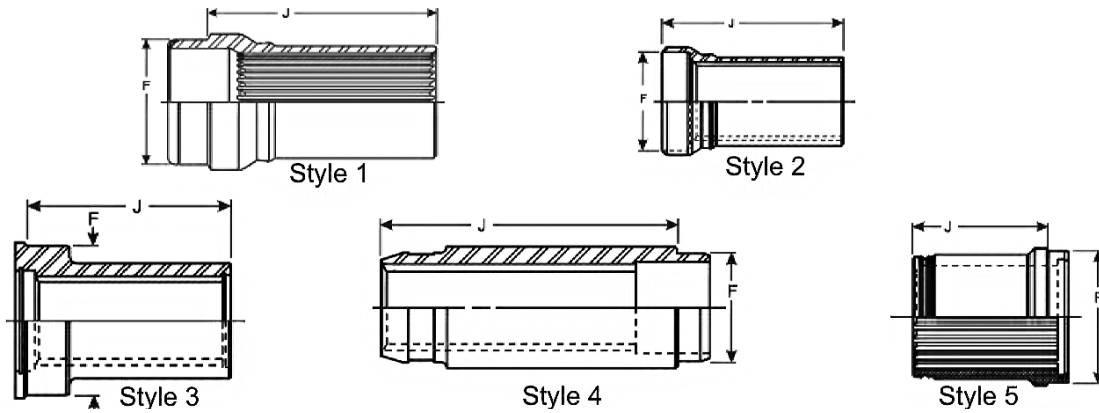
SLIP FLANGE YOKE STYLE

J Flange Face to End of Spline	F Pilot Diameter F-Female/M-Male	Bolt Hole			Dust Cap & Washer Kit Part #	Slip Yoke Assembly Part #	Notes
		B - Bolt Circle Diameter	Diameter D-Drilled/T-Tapped	# of Holes			
1610 SERIES 1.939-30 Involute Spline	E-5.312 D-1.875	USE KIT 5-279X OR 5-674X					
5.250	3.749 M	4.750	.509 D	8	90-86-18	5-3-3211KX	Use lube fitting 500174-1; order separately

• Part is discontinued ■ Part is available until supply is exhausted ▲ Not sold separately



Important: See Safety Information in General Information Section (J300P-GI)



SPLINED SLEEVES

J End of Spline to Weld	Style	Fits Tube/ Tube Yoke Part Number	Mates w/ Part Number	F Butt Diameter	Splined Sleeve Detail	Slinger Part Number	Slip Sleeve Assembly Part Number	Notes
SPL140 SERIES								
3.071-30 Involute Spline								
6.713	1	100-30-3	140-82-21X	3.937	140-55-11	232755	140-55-21X	
SPL170 SERIES								
3.053-30 Involute Spline								
8.539	1	36-30-102	5010631	4.243	—	—	170-55-10626	Sleeve Only-No Assembly
8.539	1	36-30-102	5010631	4.243	—	—	5010626	5010626 was replaced by 170-55-10626; Sleeve Only-No Assembly
11.043	2	5013415	5010631	4.104	—	—	170-55-13487-1	Sleeve Only-No Assembly
11.043	2	5013415	5010631	4.104	—	—	5013487-1	5013487-1 was replaced by 170-55-13487-1; Sleeve Only-No Assembly
3.465-32 Based On 34 Involute Spline								
5.137	2	170-28-37	170-82-191X	4.344	—	—	170-55-151	Sleeve Only-No Assembly
5.826	2	—	170-28-37	4.350	—	—	170-55-11368	Sleeve Only-No Assembly
5.826	2	—	170-28-37	4.350	—	—	5011368	Sleeve Only-No Assembly
7.205	2	170-28-37	170-82-131X	4.346	—	—	170-55-81	Sleeve Only-No Assembly
7.590	2	170-28-37	170-82-101X	4.346	—	—	170-55-61	Sleeve Only-No Assembly
7.972	1	110-30-5	170-82-71X	4.350	170-55-11-2	232700	170-55-21-2X	
7.984	2	170-28-37	170-82-71X	4.346	170-55-51-1	—	170-55-51-1	
8.771	2	170-28-37	170-82-71X	4.346	170-55-51-2	—	170-55-51-2	
9.153	1	110-30-5	170-82-61X	4.350	170-55-11-1	232700	170-55-21-1X	
9.559	2	170-28-37	170-82-71X	4.346	170-55-51-3	—	170-55-51-3	
10.346	2	170-28-37	170-82-71X	4.346	170-55-51-4	—	170-55-51-4	
SPL250 SERIES								
3.858 (98.0mm)-36 Based On 38 Involute Spline								
4.134	1	—	250-28-37	4.744	—	—	250-55-61	Sleeve Only-No Assembly
6.909	1	120-30	—	4.744	250-55-21	232696	250-55-31X	Fits all 120-30 tube diameters

• Part is discontinued ■ Part is available until supply is exhausted ▲ Not sold separately



Important: See Safety Information in General Information Section (J300P-GI)

Splined Sleeves

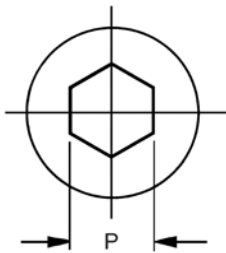
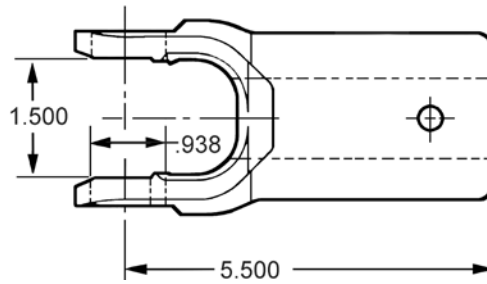


J End of Spline to Weld	Style	Fits Tube/ Tube Yoke Part Number	Mates w/ Part Number	F Butt Diameter	Splined Sleeve Detail	Slinger Part Number	Slip Sleeve Assembly Part Number	Notes
1310 SERIES								
1.375-16 Spline								
5.030	4	2-28-3707X	211256X	—	—	—	2-55-51•	Sleeve Only-No Assembly
3.002-22 Based On 23 Involute Spline								
3.580	5	32-38-12	2-82-1901X	3.854	2-55-141	6.5-68-64	2-55-258X	Material: Aluminum
1330 SERIES								
3.000-24 Spline								
7.524	1	—	5004948	3.355	5003494	—	5005921	Alum slip jt. assy, used w/3.500 o.d. alum tube
3.002-22 Based On 23 Spline								
4.910	5	—	2-82-1971X	3.815	5002371	6.5-68-64	2-55-02372X	Mat'l: alum, used w/4.500 o.d. alum tube
4.910	5	—	2-82-1971X	3.815	5002371	6.5-68-64	5002372	5002372 was replaced by 2-55-02372X; Mat'l: alum, used w/4.500 o.d. alum tube
3.002-22 Based On 23 Involute Spline								
3.910	5	—	2-82-1971X	3.854	2-55-181	6.5-68-64	2-55-268X•	Mat'l: alum, used w/4.000 o.d. alum tube
4.910	1	—	2-82-1961	3.854	—	—	2-55-278X	Mat'l: alum, used w/4.000 o.d. alum tube
1350 SERIES								
3.000-24 Spline								
6.275	5	—	5005288	4.888	5006299	—	5007951	Alum slip jt. assy. used w/4.500 o.d. alum tube
6.275	5	—	5005288	4.888	5006303	—	5007952	Alum slip jt. assy, used w/5.000 alum tube
1410 SERIES								
1.750-16 Spline								
4.410	3	211140X-*	3-82-781	2.594	3-55-33	4-68-143	3-55-38X	
1550 SERIES								
2.000-16 Spline								
4.560	3	210833X-*	4-82-211	3.320	4-55-43	4-68-43	4-55-48X	
1710 SERIES								
2.500-16 Spline								
5.720	3	211110X-*	6-82-1131-2	5.020	6-55-43	6.5-68-13	6-55-38X	
1810 SERIES								
3.000-16 Spline								
7.750	3	211570X-*	6.5-82-451-1	5.757	8-55-103	6.5-68-23	8-55-113X	
7.750	3	211180X-*	6.5-82-451-1	5.020	8-55-33	6.5-68-23	8-55-43X	

• Part is discontinued ■ Part is available until supply is exhausted ▲ Not sold separately * Tube length

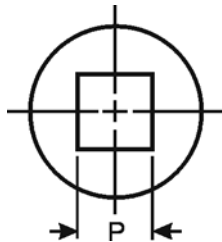


Important: See Safety Information in General Information Section (J300P-GI)



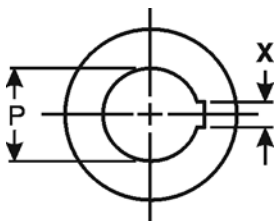
HEX HOLE

P	Lube Fitting Part #	Slip Yoke Assembly #
Hex Across Flats		
1000 SERIES K-1.500 D-.938 USE KIT 5-170X		
.875	500174-1	10-3-162X
1.125	500174-1	10-3-32X



SQUARE HOLE

P	Lube Fitting Part #	Slip Yoke Assembly #
Square Hole Across Flats		
1000 SERIES K-1.500 D-.938 USE KIT 5-170X		
.750	500174-1	10-3-12X
.875	500174-1	10-3-22X
1.000	500174-1	10-3-122X



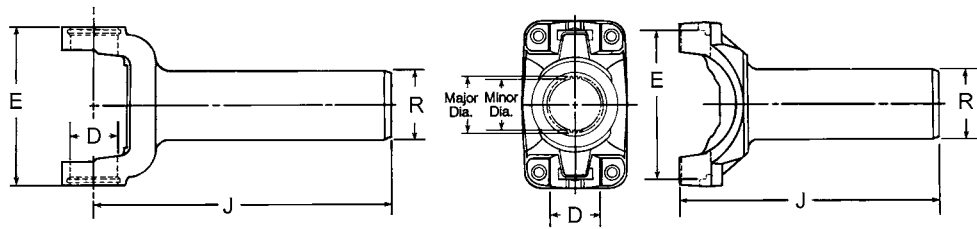
ROUND HOLE

P	X	Lube Fitting Part #	Slip Yoke Assembly #
Round Hole Diameter	SAE Keyway Width		
1000 SERIES K-1.500 D-.938 USE KIT 5-170X			
.750	.188	500174-1	10-3-13X
.812	.250	500174-1	10-3-23X
.875	.250	500174-1	10-3-33X
1.000	.250	500174-1	10-3-83X
1.125	.312	500174-1	10-3-183X
1.250	.312	500174-1	10-3-163X

• Part is discontinued ■ Part is available until supply is exhausted ▲ Not sold separately



Important: See Safety Information in General Information Section (J300P-GI)



SNAP RING (SR) STYLE

BEARING STRAP (BS) /
CONSTANT VELOCITY (CV) STYLE

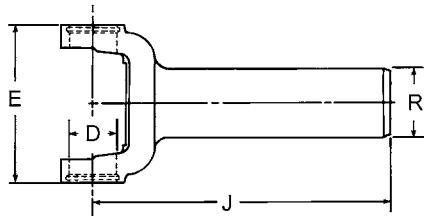
FOR TRANSMISSION APPLICATIONS

C/L to End of Spline	J	R	Counterbore		Style	Slip Yoke Plug Part #	Slip Yoke Assembly Part #	Notes
			Diameter	Depth				
SPL55 SERIES E-4.440 D-1.374 USE KIT 5-803X, 5-804X, SPL55-1X, SPL55-2X								
1.615-30 Based On 31 Involute Spline								
8.339		2.200	—	—	SR	500166-28	55-3-21X	
1.616-30 Based On 31 Involute Spline								
8.339		2.200	—	—	SR	500166-28	55-3-01672X	
8.339		2.200	—	—	SR	500166-28	5001672	5001672 was replaced by 55-3-01672X
1210 SERIES E-2.688 D-1.062 USE KIT 5-443X								
1.113-24 Based On 25 Involute Spline								
5.875		1.374	—	—	SR	500166-20	2-3-10071X•	
1310 SERIES E-3.469 D-1.062 USE KIT 5-153X, 5-785X, 5-810X								
1.005-22 Based On 24 Involute Spline								
6.045		1.376	1.043	.390	SR	500166-20	2-3-13461X	
1.104-20 Based On 21 Involute Spline								
6.000		1.496	—	—	SR	500166-20	2-3-9701X	
1.113-24 Based On 25 Involute Spline								
6.500		1.375	—	—	SR	500166-20	2-3-8431X	
8.250		1.374	1.194	2.890	SR	2-68-153	2-3-8891X•	
1.123-24 Based On 26 Involute Spline								
6.040		1.494	1.142	.390	SR	500166-20	2-3-11731X	
6.045		1.494	1.160	.390	SR	500166-20	2-3-13891X	
1.125-10 Spline								
3.469		1.625	—	—	SR	2-68-44	2-3-7501X	
3.469		1.641	—	—	SR	2-68-44	2-3-11551X•	
1.158-25 Based On 26 Involute Spline								
6.000		1.558	—	—	SR	500166-20	2-3-8731X	
6.000		1.558	—	—	SR	500166-20	2-3-9781X	
1.172-16 Spline								
4.875		1.500	—	—	SR	500166-20	2-3-1331X	
1.176-26 Based On 27 Involute Spline								
4.875		1.500	—	—	SR	500166-20	2-3-4911X	
4.891		1.500	1.260	.500	SR	500166-20	2-3-9211X	Corvette w/o vibration dampener; C-bore @ Hub End
4.891		1.502	—	—	SR	500166-20	2-3-10501X	
5.469		1.500	—	—	SR	500166-20	2-3-6081X	

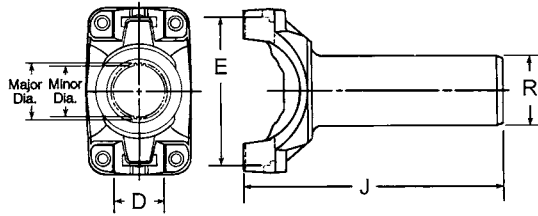
• Part is discontinued ■ Part is available until supply is exhausted ▲ Not sold separately



Important: See Safety Information in General Information Section (J300P-GI)



SNAP RING (SR) STYLE



BEARING STRAP (BS) /
CONSTANT VELOCITY (CV) STYLE

J C/L to End of Spline	R Ground Hub Diameter	Counterbore		Style	Slip Yoke Plug Part #	Slip Yoke Assembly Part #	Notes
		Diameter	Depth				
1310 SERIES (Continued) E-3.469 D-1.062 USE KIT 5-153X, 5-785X, 5-810X							
1.176-26 Based On 27 Involute Spline (Continued)							
5.469	1.500	—	—	SR	2-68-23	2-3-9191X	
5.750	1.500	—	—	SR	500166-20	2-3-13051X	Hub diameter not ground
5.750	1.502	—	—	SR	500166-20	2-3-14771X•	Nickel Plated
5.750	1.502	—	—	SR	500166-20	2-3-12411X	
5.750	1.602	—	—	SR	500166-20	2-3-15321X	W/4.500" OD dampener
6.000	1.499	—	—	SR	500166-20	2-3-10391X	
6.420	1.502	1.232	.590	SR	500166-20	2-3-11071X	
6.620	1.502	—	—	SR	500166-20	2-3-15341X	Nickel Plated
7.620	1.502	—	—	SR	500166-20	2-3-14871X•	Nickel plated yoke w/vibration dampener
7.620	1.502	—	—	SR	500166-20	2-3-14861X	Nickel Plated
1.201-23 Involute Spline							
5.750	1.578	—	—	SR	2-68-343	2-3-11721X	
5.750	1.578	—	—	SR	2-68-343	2-3-11721KX•	Toyota yoke w/slinger
1.220-27 Based On 28 Involute Spline							
5.390	1.496	—	—	SR	2-68-83	2-3-10761X	
6.500	1.491	—	—	SR	500166-20	2-3-12981X	
6.500	1.500	—	—	SR	500166-20	2-3-8251X	
7.000	1.497	—	—	SR	500166-20	2-3-12671X	
1.220-28 Involute Spline							
6.000	1.500	—	—	SR	500166-20	2-3-4871X	
1.250-15 Based On 16 Spline							
5.380	1.700	1.262	.380	SR	2-68-23	2-3-388X•	Part has one wide tooth
1.284-28 Based On 30 Involute Spline							
6.165	1.652	1.319	.450	SR	500166-22	2-3-13311X	
6.266	1.652	1.320	.390	SR	500166-22	2-3-14001X	
7.270	1.652	1.324	.450	SR	500166-22	2-3-12461X	
7.420	1.652	1.319	.630	SR	500166-20	2-3-10131X	
1.284-29 Based On 30 Involute Spline							
6.750	1.680	—	—	SR	500166-22	2-3-13551X	
6.750	1.680	—	—	—	500166-22	2-3-14791X•	Nickel Plated
9.330	1.680	—	—	SR	500166-22	2-3-14981X	Nickel Plated

• Part is discontinued ■ Part is available until supply is exhausted ▲ Not sold separately



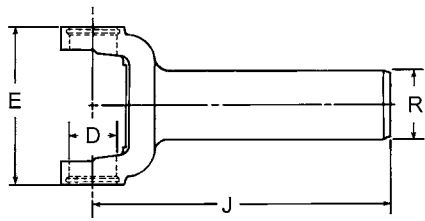
Important: See Safety Information in General Information Section (J300P-GI)

J C/L to End of Spline	R Ground Hub Diameter	Counterbore		Style	Slip Yoke Plug Part #	Slip Yoke Assembly Part #	Notes
		Diameter	Depth				
1310 SERIES (Continued) E-3.469 D-1.062 USE KIT 5-153X, 5-785X, 5-810X							
1.375-10 Spline							
2.562	2.120	—	—	SR	—	2-3-9021	Hub dia. not ground
1.377-30 Based On 32 Involute Spline							
6.102	1.731	1.387	.394	SR	500166-22	2-3-15961X	Counterbore at hub end
1.378-31 Based On 32 Involute Spline							
4.880	1.885	—	—	SR	500166-22	2-3-13131X	
1.390-30 Based On 31 Involute Spline							
7.000	1.684	—	—	SR	500166-22	2-3-15631X*	
1.397-31 Based On 32 Involute Spline							
5.188	1.688	1.458	.880	SR	500166-22	2-3-5281X	
5.500	1.885	—	—	SR	500166-22	2-3-10431X	
1.403-21 Involute Spline							
4.130	2.000	—	—	SR	2-68-154	2-3-9811X	
1.564-24 Involute Spline							
4.125	2.000	—	—	SR	2-68-154	2-3-9761X*	
1330 SERIES SR: E-3.875 OTHERS E-3.625, D-1.062 USE KIT 5-213X, 5-790X, 5-812X							
1.113-24 Based On 25 Involute Spline							
6.860	1.374	—	—	SR	500166-20	2-3-15471X	Nickel plated yoke w/vibration dampener
6.860	1.374	—	—	SR	500166-20	2-3-15461X	Nickel Plated
6.860	1.374	—	—	SR	500166-20	2-3-13721X	
1.158-25 Based On 26 Involute Spline							
6.180	1.558	—	—	SR	500166-20	2-3-15051X*	
7.000	1.558	—	—	SR	500166-20	2-3-14311X	Nickel Plated
1.176-26 Based On 27 Involute Spline							
5.470	1.502	—	—	SR	500166-20	2-3-12081X	
5.470	1.502	1.218	.390	SR	500166-20	2-3-12361X	W/c-bore and vibration dampener
5.470	1.502	1.218	.390	SR	500166-20	2-3-12371X*	
5.760	1.502	—	—	SR	500166-20	2-3-13671X*	
6.417	1.502	1.216	.590	SR	500166-20	2-3-15751X*	
6.760	1.502	1.217	.410	SR	500166-20	2-3-11781X	
6.760	1.502	1.217	.410	SR	500166-20	5010254	5010254 was replaced by 2-3-11781X
6.760	1.502	1.217	.410	SR	2-68-23	2-3-12051X	
7.290	1.558	—	—	SR	500166-20	2-3-14171X*	Nickel Plated
7.290	1.558	—	—	SR	500166-20	2-3-14191X	
1.177-26 Based On 27 Involute Spline							
6.760	1.500	1.225	.300	SR	2-68-23	5001433	5001433 was replaced by 2-3-01433X; Nickel Plated w/c'bore at end
6.760	1.502	1.217	.300	SR	2-68-23	2-3-01433X	Nickel Plated w/c'bore at end

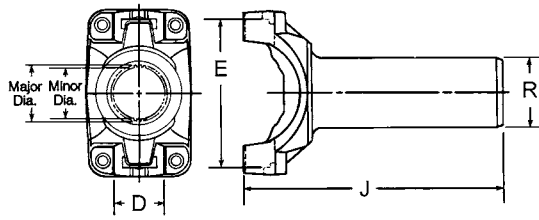
• Part is discontinued ■ Part is available until supply is exhausted ▲ Not sold separately



Important: See Safety Information in General Information Section (J300P-GI)



SNAP RING (SR) STYLE



BEARING STRAP (BS) /
CONSTANT VELOCITY (CV) STYLE

J C/L to End of Spline	R Ground Hub Diameter	Counterbore		Style	Slip Yoke Plug Part #	Slip Yoke Assembly Part #	Notes
		Diameter	Depth				
1330 SERIES (Continued) SR: E-3.875 OTHERS E-3.625, D-1.062 USE KIT 5-213X, 5-790X, 5-812X							
1.201-23 Involute Spline							
6.319	1.574	—	—	SR	2-68-343	2-3-02274X	
6.319	1.574	—	—	SR	2-68-343	5002274	
7.106	1.574	—	—	SR	2-68-343	5002278	5002278 was replaced by 2-3-02278X
7.106	1.574	—	—	SR	2-68-343	2-3-02278X	
1.219-27 Based On 28 Involute Spline							
5.920	1.500	—	—	SR	500166-20	2-3-13011X▲	
5.920	1.594	—	—	SR	500166-20	2-3-13031X	
5.922	1.585	—	—	SR	500166-20	2-3-11891X	
1.220-27 Based On 28 Involute Spline							
5.906	1.500	—	—	SR	500166-20	2-3-5981X	
6.630	1.597	—	—	SR	500166-20	2-3-14061X	
7.860	1.497	—	—	SR	500166-20	2-3-13691X	Same as 2-3-13701X, exc. w/o dampener
7.860	1.497	—	—	SR	500166-20	2-3-13701X●	W/vibration dampener
1.284-29 Based On 30 Involute Spline							
8.030	1.680	1.440	1.440	SR	500166-20	2-3-14031X	Nickel Plated
8.030	1.680	1.440	1.440	SR	500166-22	2-3-14261X●	
9.000	1.680	—	—	SR	500166-22	2-3-12621X	Nickel plated yoke w/vibration dampener
9.000	1.680	—	—	SR	500166-20	2-3-14221X●	W/vibration dampener
9.000	1.680	—	—	SR	500166-22	2-3-14211X●	
1.370-16 Based On 19 Involute Spline							
7.106	1.770	—	—	SR	5002153	5002150	5002150 was replaced by 2-3-02150X; Spline has three partial teeth missing
7.106	1.770	—	—	SR	5002153	2-3-02150X	Spline has three partial teeth missing
1.377-30 Based On 32 Involute Spline							
6.102	1.731	1.375	.393	SR	500166-22	2-3-16011X●	Includes boot can
1.378-30 Based On 32 Involute Spline							
6.102	1.731	1.375	.393	SR	500166-22	2-3-15871X	
8.464	1.731	1.385	.393	SR	500166-22	2-3-02091X	
8.464	1.731	1.385	.393	SR	500166-22	5002091	
6.760	1.885	—	—	SR	500166-22	2-3-10831X	

● Part is discontinued ■ Part is available until supply is exhausted ▲ Not sold separately



Important: See Safety Information in General Information Section (J300P-GI)

Slip Yoke Assemblies

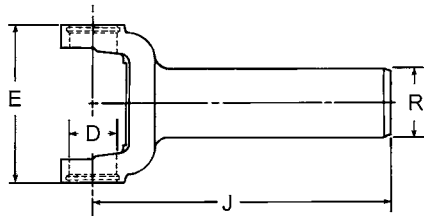


J C/L to End of Spline	R Ground Hub Diameter	Counterbore		Style	Slip Yoke Plug Part #	Slip Yoke Assembly Part #	Notes
		Diameter	Depth				
1330 SERIES (Continued) SR: E-3.875 OTHERS E-3.625, D-1.062 USE KIT 5-213X, 5-790X, 5-812X							
1.378-31 Based On 32 Involute Spline							
6.760	1.885	—	—	SR	2-68-143	2-3-12191X•	
6.760	1.885	—	—	SR	500166-24	2-3-13811X•	
7.250	1.885	—	—	SR	500166-22	2-3-14241X	Nickel Plated
7.720	1.885	—	—	SR	500166-24	2-3-14831X	Nickel Plated
7.720	1.885	—	—	SR	500166-24	2-3-13881X•	OEM Only
7.940	1.885	1.410	.220	SR	500166-24	2-3-10791X	
8.640	1.885	—	—	SR	500166-22	2-3-14281X	Nickel Plated
1.390-30 Based On 31 Involute Spline							
6.000	1.688	—	—	SR	500166-22	2-3-6041X	
7.000	1.885	—	—	SR	500166-22	2-3-10201X	
7.460	1.886	—	—	CV	500166-22	2-3-12961X	C.V. Yoke-Nickel Plated
1.401-32 Based On 34 Involute Spline							
8.465	1.770	—	—	SR	500166-20	2-3-03207X	
8.465	1.770	—	—	SR	500166-20	5003207	5003207 was replaced by 2-3-03207X
1.406-32 Based On 34 Involute Spline							
8.456	1.770	—	—	SR	500166-22	2-3-04846X	
8.456	1.770	—	—	SR	500166-22	5004846	5004846 was replaced by 2-3-04846X
8.464	1.770	—	—	SR	500166-22	3-3-08189X	
8.465	1.771	1.438	.393	SR	500166-22	2-3-15891X	
8.465	1.771	1.438	.393	SR	500166-22	2-3-04410X	
8.465	1.771	1.438	.393	SR	500166-22	5004410	5004410 was replaced by 2-3-04410X
1350 SERIES E-3.875 D-1.188 USE KIT 5-178X OR 5-799X							
1.176-26 Based On 27 Involute Spline							
6.940	1.502	1.218	.410	SR	2-68-23	3-3-4281X	
6.940	1.502	1.218	.410	SR	500166-20	3-3-3721X	
1.201-20 Based On 23 Involute Spline							
7.106	1.574	—	—	SR	—	5004083•	OEM Only
1.230-20 Based On 23 Involute Spline							
7.106	1.574	—	—	SR	2-68-343	5016999•	OEM Only
1.284-29 Based On 30 Involute Spline							
9.512	1.681	—	—	SR	500166-22	5015498	OEM Only
9.519	1.680	—	—	SR	500166-22	5016138	OEM Only
1.326-29 Based On 30 Involute Spline							
6.630	1.680	—	—	SR	500166-22	3-3-3931X	
7.779	1.885	—	—	SR	500166-22	5002231	5002231 was replaced by 3-3-02231X
7.779	1.885	—	—	SR	500166-22	3-3-02231X	

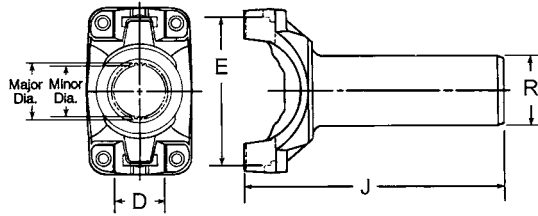
• Part is discontinued ■ Part is available until supply is exhausted ▲ Not sold separately



Important: See Safety Information in General Information Section (J300P-GI)



SNAP RING (SR) STYLE



BEARING STRAP (BS) /
CONSTANT VELOCITY (CV) STYLE

J C/L to End of Spline	R Ground Hub Diameter	Counterbore		Style	Slip Yoke Plug Part #	Slip Yoke Assembly Part #	Notes
		Diameter	Depth				
1350 SERIES (Continued) E-3.875 D-1.188 USE KIT 5-178X OR 5-799X							
1.375-31 Based On 32 Involute Spline							
6.938	1.886	—	—	SR	3-68-33	3-3-6481X	1/8" hole in welch plug
6.940	1.886	—	—	SR	500166-24	3-3-6361X•	
1.378-30 Based On 32 Involute Spline							
6.100	1.731	1.388	.394	SR	500166-22	3-3-7091X	without slinger
1.378-31 Based On 32 Involute Spline							
5.500	1.885	—	—	SR	500166-24	3-3-2431X	
6.938	1.886	—	—	SR	500166-24	3-3-5571X	
6.938	1.886	—	—	SR	3-68-33	3-3-4261X	
7.720	1.885	—	—	SR	500166-24	3-3-6871X	Nickel Plated
7.720	1.886	—	—	SR	500166-24	3-3-6441X	
7.940	1.886	1.430	.220	SR	500166-24	3-3-5551X	
8.432	1.885	—	—	SR	500166-24	5010279•	
1.390-30 Based On 31 Involute Spline							
6.440	1.685	—	—	SR	500166-22	3-3-2491X	
6.570	1.684	—	—	SR	500166-22	3-3-5961X	
7.310	1.885	—	—	SR	500166-23	3-3-5431X	
7.460	1.885	—	—	CV	500166-22	3-3-4531X•	CV yoke-OEM only
7.460	1.885	—	—	CV	500166-22	3-3-5861X	C.V. Yoke-Nickel Plated
1.401-32 Based On 34 Involute Spline							
8.465	1.770	—	—	SR	500166-20	5002464•	OEM Only
1.403-21 Involute Spline							
5.310	1.830	—	—	SR	500166-24	3-3-848X	Hub dia. not ground
1.496-22 Involute Spline							
7.106	1.930	—	—	SR	500166-24	5015119	5015119 was replaced by 3-3-15119X
7.106	1.930	—	—	SR	232923	5004082•	OEM Only
7.106	1.930	—	—	SR	500166-24	3-3-15119X	
1.533-22 Based On 32 Involute Spline							
7.106	1.930	—	—	SR	500166-24	5016994•	OEM Only
1410 SERIES E-4.438 D-1.188 USE KIT 5-160X OR 5-801X							
1.284-29 Based On 30 Involute Spline							
8.340	1.680	—	—	SR	500166-22	3-3-6121X	Nickel Plated
8.340	1.680	1.440	1.440	SR	500166-22	3-3-4181X	
8.340	1.680	1.440	1.440	SR	500166-22	3-3-4851X	Nickel Plated
8.340	2.161	1.440	1.440	SR	500166-22	5002035•	
8.340	2.161	1.440	1.440	SR	500166-22	3-3-02035X▲	
8.344	1.688	—	—	SR	500166-22	3-3-6131X	Nickel plated yoke w/vibration dampener

• Part is discontinued ■ Part is available until supply is exhausted ▲ Not sold separately



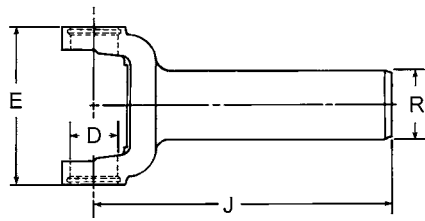
Important: See Safety Information in General Information Section (J300P-GI)

J C/L to End of Spline	R Ground Hub Diameter	Counterbore		Style	Slip Yoke Plug Part #	Slip Yoke Assembly Part #	Notes
		Diameter	Depth				
1410 SERIES (Continued) E-4.438 D-1.188 USE KIT 5-160X OR 5-801X							
1.326-29 Based On 30 Involute Spline							
8.340	1.680	1.440	1.440	SR	500166-22	3-3-3251X	
8.340	1.680	1.440	1.440	SR	500166-22	3-3-3271X	Nickel Plated
1.378-30 Based On 32 Involute Spline							
6.100	1.731	1.387	.394	SR	500166-22	3-3-04624X	
6.100	1.731	1.387	.394	SR	500166-22	5004624	5004624 was replaced by 3-3-04624X
1.378-31 Based On 32 Involute Spline							
6.940	1.885	—	—	SR	3-68-23	3-3-6471X•	
6.940	1.885	—	—	SR	500166-24	3-3-6321X	
6.940	1.885	—	—	SR	500166-24	3-3-6811X•	
7.750	1.885	—	—	SR	500166-22	3-3-3811X	
7.750	1.885	—	—	SR	500166-22	3-3-3891X	Nickel Plated
8.070	1.885	—	—	SR	500166-24	5001646	5001646 was replaced by 3-3-01646X; Nickel Plated
8.070	1.885	—	—	SR	500166-24	3-3-6421X	
8.070	1.885	—	—	SR	500166-24	3-3-01646X	Nickel Plated
8.750	1.885	—	—	SR	500166-22	3-3-4401X	
8.750	1.886	—	—	SR	500166-22	3-3-4211X	W/vibration dampener
1.390-30 Based On 31 Involute Spline							
8.110	1.885	—	—	SR	500166-22	3-3-6001X•	Nickel Plated - OEM only
8.110	1.885	—	—	SR	500166-22	3-3-6661X	
1.406-34 Involute Spline							
8.465	1.770	—	—	SR	500166-22	3-3-18190X ▲	Nickel Plated
1.500-35 Based On 37 Involute Spline							
6.102	1.888	1.535	.254	SR	500166-24	5013341	OEM Only
1.551-33 Based On 34 Involute Spline							
8.110	2.086	—	—	SR	500166-26	3-3-7041X	Nickel Plated
1.615-30 Based On 31 Involute Spline							
7.750	2.200	—	—	SR	500166-28	3-3-5631X	
8.340	2.200	—	—	SR	500166-28	3-3-4391X	
8.340	2.200	—	—	SR	500166-28	3-3-4131X	same as 3-3-4391x except w/vibration dampener
8.340	2.200	1.655	.270	SR	500166-28	3-3-6541X	Counterbore at hub end
8.344	2.201	—	—	SR	500166-28	3-3-6141X•	w/vibration dampener
8.344	2.201	—	—	SR	500166-28	3-3-3441X	
1.616-30 Based On 31 Involute Spline							
7.750	2.200	—	—	SR	500166-28	3-3-5611X	Nickel Plated
8.340	2.200	1.655	.270	SR	500166-28	5001683	5001683 was replaced by 3-3-01683X; Nickel Plated
8.340	2.200	1.655	.270	SR	500166-28	3-3-01683X	Nickel Plated
1.748-33 Based On 34 Involute Spline							
9.291	2.300	—	—	SR	500166-29	3-3-17529X	Nickel Plated
9.291	2.300	—	—	SR	500166-29	5017529	5017529 was replaced by 3-3-17529X; Nickel Plated

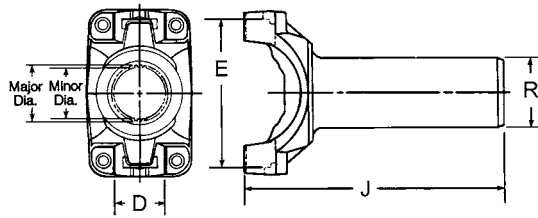
• Part is discontinued ■ Part is available until supply is exhausted ▲ Not sold separately



Important: See Safety Information in General Information Section (J300P-GI)



SNAP RING (SR) STYLE



BEARING STRAP (BS) /
CONSTANT VELOCITY (CV) STYLE

C/L to End of Spline	J	R	Counterbore		Style	Slip Yoke Plug Part #	Slip Yoke Assembly Part #	Notes
			Diameter	Depth				
1480 SERIES E-4.438 D-1.375 USE KIT 5-188X, 5-803X OR 5-804X								
1.390-30 Based On 31 Involute Spline								
6.870		1.885	—	—	SR	500166-23	3-3-6021X	
1.654-20 Involute Spline								
4.560		2.380	—	—	SR	500166-26	3-3-3151X	Hub dia. not ground
1550 SERIES E-5.250 D-1.375 USE KIT 5-155X, 5-808X OR 5-809X								
1.875-14 Involute Spline								
4.203		3.000	—	—	SR	500166-31	4-3-1961X [•]	
4.703		2.750	—	—	SR	500166-31	4-3-1951X	
2.372-46 Involute Spline								
4.880		3.125	—	—	SR	500166-46	4-3-2441X	Includes flinger

• Part is discontinued ■ Part is available until supply is exhausted ▲ Not sold separately



Important: See Safety Information in General Information Section (J300P-GI)

1-3-18KX.....3	2-3-12361X19	2-3-14831X21	2-3-7691KX.....5
1-3-88KX.....3	2-3-12371X•19	2-3-14861X18	2-3-7961KX.....6
2-3-01433X19	2-3-12411X18	2-3-14871X•18	2-3-7981KX.....5
2-3-02091X20	2-3-12421X.....4	2-3-14981X18	2-3-8001KX.....5
2-3-02150X20	2-3-12461X18	2-3-15051X•19	2-3-8021KX.....5
2-3-02274X20	2-3-12621X20	2-3-15101X.....4	2-3-8041KX.....6
2-3-02278X20	2-3-12671X18	2-3-15321X18	2-3-8111KX•.....6
2-3-03207X21	2-3-12881X.....4	2-3-15341X18	2-3-8251X18
2-3-04410X21	2-3-128KX.....4	2-3-15461X19	2-3-8311X5
2-3-04846X21	2-3-12961X21	2-3-15471X19	2-3-8431X17
2-3-06028X.....5	2-3-12981X18	2-3-15631X•19	2-3-8481X5
2-3-10021X4	2-3-13011X▲20	2-3-15651X.....5	2-3-8731X17
2-3-10071X•17	2-3-13031X.....20	2-3-15751X•19	2-3-8741X5
2-3-10131X18	2-3-13051X18	2-3-15871X20	2-3-8811X•4
2-3-10201X21	2-3-13131X19	2-3-15891X21	2-3-8841KX.....4
2-3-10261KX.....5	2-3-13221X5	2-3-15941X.....4	2-3-8861X.....4
2-3-10391X18	2-3-13311X18	2-3-15961X19	2-3-8891X•17
2-3-10411X.....4	2-3-1331X17	2-3-16011X•20	2-3-8921X.....5
2-3-10431X19	2-3-13461X17	2-3-16221X.....5	2-3-8941KX•.....5
2-3-10501X17	2-3-13551X18	2-3-178KX.....4	2-3-902119
2-3-10521X.....4	2-3-13571X•5	2-3-1931KX.....5	2-3-9031X▲4
2-3-10571KX•6	2-3-13671X•19	2-3-198KX.....4	2-3-9191X18
2-3-10641KX•5	2-3-13691X20	2-3-258KX4	2-3-9211X17
2-3-10661X4	2-3-13701X•20	2-3-348KX4	2-3-9371X•5
2-3-10761X18	2-3-13721X19	2-3-388X•18	2-3-9701X17
2-3-10791X21	2-3-13811X•21	2-3-3951KX.....4	2-3-9761X19
2-3-10801X•5	2-3-13831X.....5	2-3-4071KX.....5	2-3-9781X17
2-3-10831X20	2-3-13881X•21	2-3-4441KX.....4	2-3-9811X19
2-3-10871X•6	2-3-13891X17	2-3-4681KX.....6	2-3-9991X.....4
2-3-11071X18	2-3-14001X18	2-3-4871X18	2-55-02372X15
2-3-11351X•4	2-3-14031X20	2-3-4911X17	2-55-258X15
2-3-11491KX.....5	2-3-14061X20	2-3-4951KX4	2-55-268X•15
2-3-11551X•17	2-3-14171X•19	2-3-5221X5	2-55-278X15
2-3-11721KX•18	2-3-14191X19	2-3-5281X19	2-55-51•15
2-3-11721X18	2-3-14211X•20	2-3-5821X5	3-3-01646X23
2-3-11731X17	2-3-1421KX.....4	2-3-5981X20	3-3-01683X23
2-3-11781X19	2-3-14221X•20	2-3-6041X21	3-3-02035X▲22
2-3-11891X20	2-3-14241X21	2-3-6061KX.....5	3-3-02231X21
2-3-11991KX•5	2-3-14261X•20	2-3-6081X17	3-3-04624X23
2-3-11991X•5	2-3-14281X21	2-3-7171KX.....5	3-3-08019X.....7
2-3-12031KX6	2-3-14311X19	2-3-7461X5	3-3-08189X.....21
2-3-12051X19	2-3-14331X.....5	2-3-7481X•6	3-3-118KX.....7
2-3-12081X19	2-3-1461KX.....4	2-3-7501X17	3-3-1421KX.....6
2-3-12191X•21	2-3-14771X•18	2-3-7661KX.....4	3-3-1481KX.....7
2-3-12301KX.....4	2-3-14791X•18	2-3-7681KX.....5	3-3-1501KX.....6



Important: See Safety Information in General Information Section (J300P-GI)



3-3-15119X22	3-3-4391X23	3-3-6641X•8	5-3-3101KXM10
3-3-1511KX.....8	3-3-4401X23	3-3-6661X23	5-3-3121KX10
3-3-1561KX.....7	3-3-4421X7	3-3-6701X.....7	5-3-3141KX10
3-3-1601KX.....8	3-3-4531X•22	3-3-6771X.....7	5-3-3211KX.....13
3-3-1621KX.....8	3-3-4551X•.....8	3-3-6791X7	5-3-3231X10
3-3-1641KX.....8	3-3-4651X.....6	3-3-6811X•23	5-3-368KX10
3-3-1701KX8	3-3-468KX.....7	3-3-6831X.....7	5-3-398X10
3-3-17529X23	3-3-4781X.....6	3-3-6871X22	6-3-1481KX11
3-3-18190X ▲23	3-3-4851X22	3-3-6981X.....6	6-3-1601KX•11
3-3-1831KX.....8	3-3-4871X.....7	3-3-7001X.....8	6-3-1661KX11
3-3-2041KX.....7	3-3-488KX.....7	3-3-7021X.....8	6-3-2591KX11
3-3-2431X22	3-3-508KX.....8	3-3-7041X23	6-3-2631KX10
3-3-2471KX.....6	3-3-5141X•.....8	3-3-7091X22	6-3-2651KX11
3-3-2491X22	3-3-5181KX.....7	3-3-748KX7	6-3-2671KX11
3-3-2591KX.....6	3-3-5411KX.....7	3-3-758KX.....6	6-3-2721X10
3-3-2681KX7	3-3-5431X22	3-3-768KX7	6-3-2741KX10
3-3-2701KX.....6	3-3-5461X.....6	3-3-788KX.....7	6-3-2761KX10
3-3-2801KX.....6	3-3-5481KX.....8	3-3-798KX.....8	6-3-2801KX10
3-3-2861X.....6	3-3-5491X.....7	3-3-838X.....8	6-3-3151KX11
3-3-2931KX•.....7	3-3-5551X22	3-3-848X22	6-3-3171KX10
3-3-2991X.....7	3-3-5571X22	3-55-38X14	6-3-3211X10
3-3-3001X6	3-3-5611X23	4-3-08843KX.....9	6-3-3441KX11
3-3-3121X8	3-3-5631X23	4-3-1241KX.....9	6-3-3461KX11
3-3-3151X24	3-3-5861X22	4-3-1261KX.....9	6-3-3481KX11
3-3-3251X23	3-3-5921KX.....6	4-3-1411KX.....9	6-3-3501KX11
3-3-3271X23	3-3-5961X22	4-3-1431KX.....9	6-3-3521KX10
3-3-3311KX.....7	3-3-598KX.....7	4-3-1751KX.....9	6-3-3541KX10
3-3-3381X.....7	3-3-6001X•23	4-3-1921KX.....9	6-3-3611KXM•11
3-3-3401X.....7	3-3-6021X24	4-3-1951X24	6-55-38X15
3-3-3441X23	3-3-6041X•8	4-3-1961X•24	6.3-3-21KX11
3-3-3461X.....7	3-3-6061X.....8	4-3-2041KX9	6.3-3-41KX11
3-3-3601X.....7	3-3-6121X22	4-3-2121KX.....9	6.5-3-1351KX11
3-3-3721X21	3-3-6131X22	4-3-2141KX.....9	6.5-3-1371KX11
3-3-3791X8	3-3-6141X•24	4-3-2441X24	6.5-3-1431KX11
3-3-3811X23	3-3-6201X.....6	4-55-48X14	6.5-3-1451KX11
3-3-3871KX.....8	3-3-6321X23	5-3-108KX10	6.5-3-1571KX•11
3-3-388KX.....7	3-3-6341X.....7	5-3-128KX•10	6.5-3-1761X11
3-3-3891X23	3-3-6361X•22	5-3-1411KX10	8-3-391KX11
3-3-3931X21	3-3-6381X.....6	5-3-168KX10	8-3-411KX11
3-3-398KX.....7	3-3-6421X23	5-3-1711KX10	8-3-431KX11
3-3-4131X23	3-3-6441X22	5-3-198KX10	8-55-113X15
3-3-4181X23	3-3-6471X•23	5-3-2261KX10	8-55-43X15
3-3-4211X22	3-3-6481X22	5-3-288KX10	10-3-121KX.....3
3-3-4261X22	3-3-6541X23	5-3-2911X10	10-3-122X16
3-3-4281X21	3-3-6611X7	5-3-2971X10	10-3-12X16



Important: See Safety Information in General Information Section (J300P-GI)



10-3-131X.....	3	5002150.....	20
10-3-13X.....	16	5002231.....	21
10-3-162X.....	16	5002274.....	20
10-3-163X.....	16	5002278.....	20
10-3-183X.....	16	5002372.....	15
10-3-18KX.....	3	5003207.....	21
10-3-22X.....	16	5004410.....	21
10-3-23X.....	16	5004624.....	23
10-3-291KX.....	3	5004846.....	21
10-3-32X.....	16	5005921.....	14
10-3-33X.....	16	5006028.....	5
10-3-51X.....	3	5007951.....	15
10-3-81X.....	3	5007952.....	14
10-3-83X.....	16	5008019.....	7
55-3-01672X.....	17	5008843.....	9
55-3-21X.....	17	5009115.....	3
55-3-61X.....	3	5010254.....	19
55-3-81X.....	3	5010626.....	14
70-3-09115X.....	3	5011368.....	14
70-3-21X.....	3	5013341.....	23
70-3-41X.....	3	5013487-1.....	14
90-3-21X.....	3	5015119.....	22
90-3-41X.....	3	5015498.....	21
100-3-41X.....	3	5016138.....	21
140-55-21X.....	14	5017529.....	23
170-55-21-1X.....	14	211391X.....	6
170-55-21-2X.....	14	5002035•.....	22
170-55-61.....	14	5002464•.....	22
170-55-81.....	14	5004082•.....	22
170-55-151.....	14	5004083•.....	21
170-55-10626.....	14	5010279•.....	22
170-55-11368.....	14	5016994•.....	22
170-55-13487-1.....	14	5016999•.....	21
170-55-51-1.....	14	5C-3-21X•.....	12
170-55-51-2.....	14	6C-3-21X.....	12
170-55-51-3.....	14		
170-55-51-4.....	14		
250-55-61.....	14		
250-55-31X.....	14		
2-3-9021.....	19		
5001433.....	19		
5001646.....	23		
5001672.....	17		
5001683.....	23		
5002091.....	20		



Important: See Safety Information in General Information Section (J300P-GI)

Product Information: [SpicerParts.com](https://www.SpicerParts.com) | E-Catalog and parts locator: [DanaAftermarket.com](https://www.DanaAftermarket.com)

Dana Aftermarket Group

PO Box 1000 Maumee, Ohio 43537

Warehouse Distributors: 1.800.621.8084

OE Dealers: 1.877.777.5360

Follow SpicerParts [f](#) [t](#) [@](#) [v](#) [in](#)

© 2021 Dana Limited. All rights reserved. J300P-3-62021

SPICER[®]

