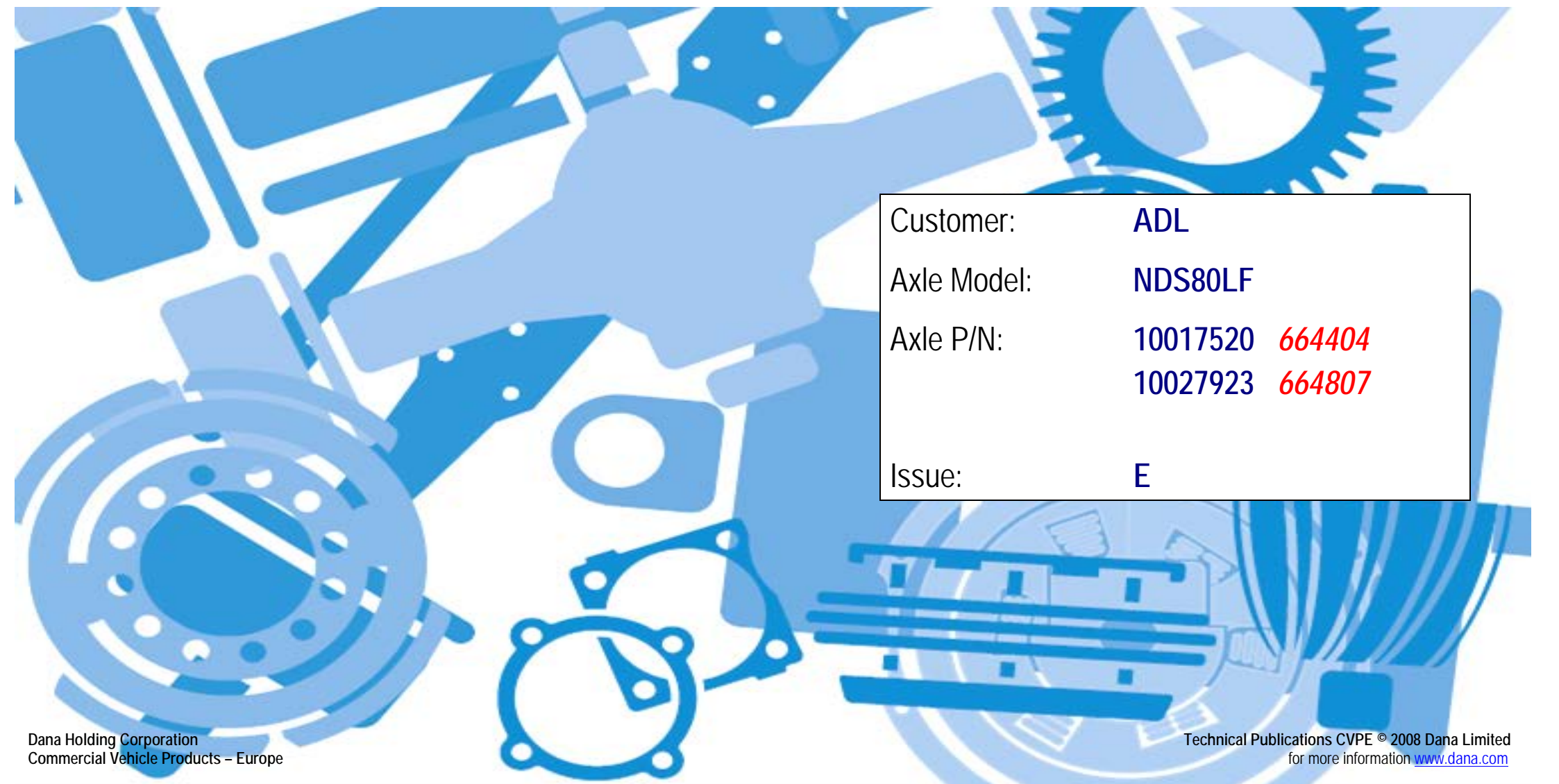


SPEC00000920

ILLUSTRATED PART LIST



Customer:	ADL
Axle Model:	NDS80LF
Axle P/N:	10017520 <i>664404</i> 10027923 <i>664807</i>
Issue:	E

The description, testing procedures, and specifications contained in this parts / service publication were current at time of writing. This manual will not be updated. If in doubt about any aspect of maintenance or servicing of the axle please contact the vehicle builder or our service department directly.

SPICER[®] products are subject to continuous development and we reserve the right to modify procedures and to make changes in specifications at any time without prior notice and without incurring in any obligation.

The recommendations of the vehicle manufacturer should be considered as the primary source of service information regarding this **SPICER**[®] product. This manual is intended to be used as a supplement to such information.

Any references to brand names in this publication are made simply as an example of the types of tools and materials recommended for use and, as such, should not be considered as an endorsement.

This manual is the property of **Commercial Vehicle Products – Europe**, a division of **Dana Holding Corporation**, and may not be copied or disseminated without prior agreement of **Commercial Vehicle Products– Europe**, a division of **Dana Holding Corporation**.

Commercial Vehicle Products – Europe, a division of **Dana Holding Corporation**, recommends following all manufacturers recommendations for the proper handling and disposal of lubricants and solvents. For further information please contact the lubricants and solvents supplier.

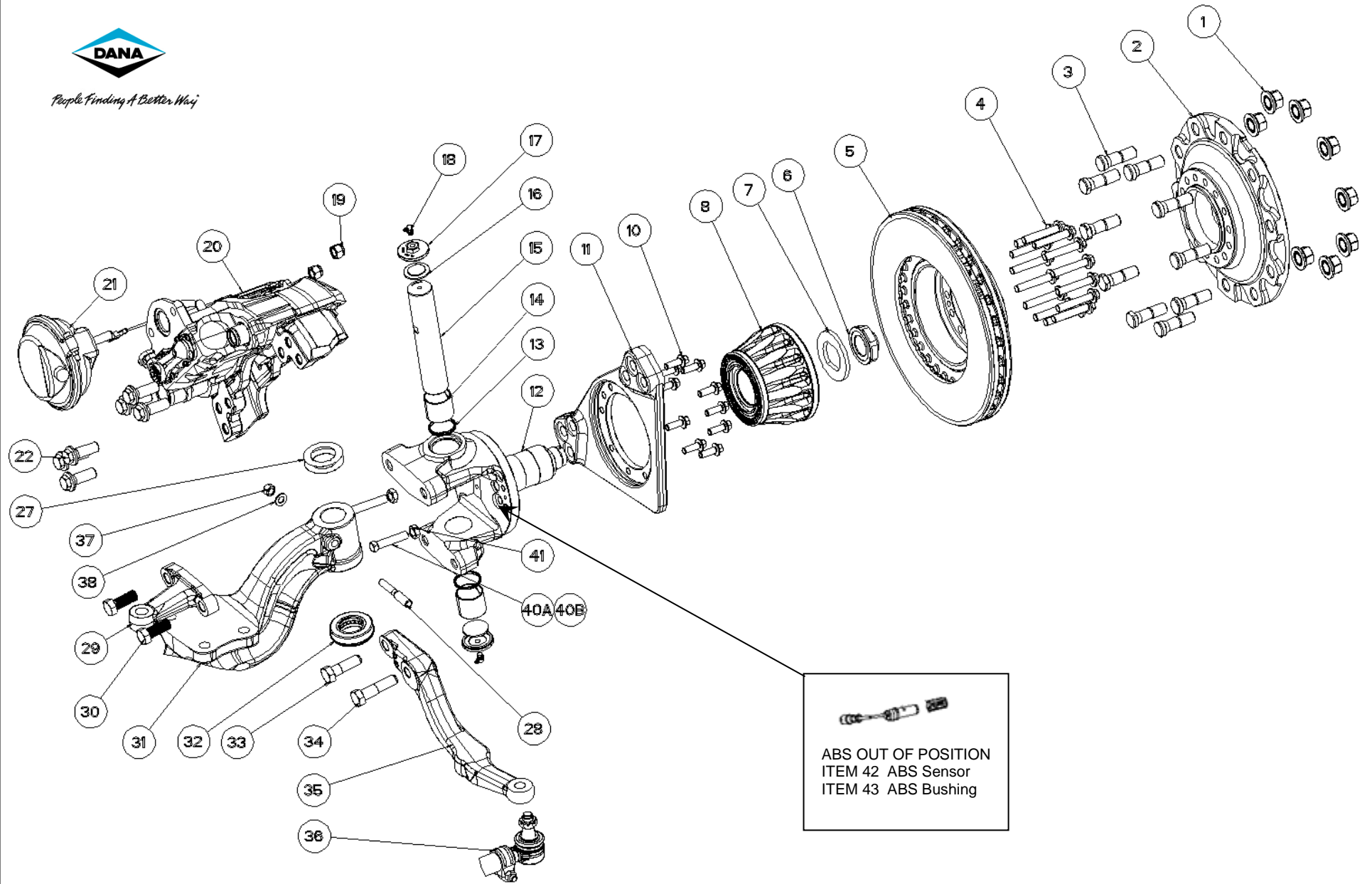
EVERY EFFORT HAS BEEN MADE TO ENSURE THE ACCURACY OF THE INFORMATION CONTAINED WITHIN THIS MANUAL.

HOWEVER, COMMERCIAL VEHICLE PRODUCTS – EUROPE, A DIVISION OF DANA HOLDING CORPORATION, MAKES NO EXPRESSED OR IMPLIED WARRANTY OR REPRESENTATION BASED ON THE ENCLOSED INFORMATION.

Last Modification	Approved by	Date	Issue	Eng. Change
RELEASED	A.U.	10/06/15	A	EW013988
Item 1 replaced, was 833206 Wheelnut, now E917667 Paperboard Protector.	P.S.	29/10/15	B	EW016461
Item 8 WAS SL279/4	A.U.	02/11/16	C	EW023237
Items 29 & 35 changed	A.U.	21/03/19	D	EW060291
Item 36 was 26376/10S (socket assy references updated)	A.U.	02/03/21	E	EW083870



People Finding A Better Way



Dana Holding Corporation
Commercial Vehicle Products - Europe

Technical Publications CVPE © 2008 Dana Limited
for more information www.dana.com

NDS80LF 10017520 & 10027923 Part List & Tightening Torques

Item	Part Number		Description	Qty ⁰
	10017520	10027923		
1	E917667		Paperboard Protector	20
2	F5138/28		Wheel hub ³	2
3	833198		Wheel bolt ³	20
4	F5064/55		Flanged bolt	28
5	F4866/88		Brake Disc	2
6	F5169/77		Hub Bearing – Nut	2
7	F5170/30		Hub Bearing – Collet w washer	2
8	10044573		Hub Bearing – Unitized	2
10	833031		Bolt	20
11	F5171/87		Brake Mounting Bracket - LH	1
	F5171/86		Brake Mounting Bracket - RH	1
12	F5171/2		Knuckle ⁶	2
13	820518		Kingpin – Seal ²	4
14	806334		Kingpin – Bushing ^{2, 6}	4
15	F4866/14		Kingpin ²	2
16	971010		Kingpin – Foam insert ²	4
17	971370		Kingpin – Cap ²	4
18	1001414		Grease nipple (90°) ²	4
19	MX-1-1601		Nut – Self Lock	4
20	828144	10027926	Air Disc Brake (ADB) assy – LH	1
	828143	10027925	Air Disc Brake (ADB) assy – RH	1
21	SM487/63K		Air Chamber – LH	1
	SM487/64K		Air Chamber – RH	1
22	833175		Brake fixing – Bolt	12
27	817493		Kingpin – Adjusting shim (0.13mm) ²	AR ¹
	817494		Kingpin – Adjusting shim (0.25mm) ²	AR ¹
28	816239		Draw key ²	2
29	10025561 (R.H.)		Top steering lever	1
30	ML6020/50X		Top steering lever – Bolt	2
31	F4922/1		Beam - Axle	1
32	220HC104		Thrust bearing ²	2
33	ML6020/65X		Bottom steering lever – Bolt	2
34	ML6020/80X		Bottom steering lever – Bolt	2
35	10026624		Bottom steering lever – LH	1
	10026618		Bottom steering lever – RH	1
36	10138780		Socket and Tie Rod assy	1
	F4863/12E		Tie Rod Tube	1 ⁴
	F4907/13		Clamp Assy	2 ⁴
	10137814		Socket assy – LH	1 ⁴
	10137815		Socket assy – RH	1 ⁴
	F4863/15		Hardware – Castle nut	2 ⁴
	F4863/15A		Hardware – Split pin	2 ⁴

Item	Part Number		Description	Qty ⁰
	10017520	10027923		
37	SL221/6		Draw key – Nut ²	2
38	SL241/6		Draw key – Washer ²	2
40A	818140 (R.H.)		Front Lock – Stop Bolt	1
40B	10009441		Back Lock – Stop Bolt	2
41	SL221/8		Nut – Stop Bolt	3
42	833017		ABS Sensor	2
43	830168		ABS Bushing	2

NOTES:

⁰ Quantities listed are for complete axle unit

¹ As Required

² Available as a Service Kit: 12280/1 & 12280/2

³ Available as a Sub-Assembly: K26853/1

⁴ Comprising tie rod assembly: Item # 36 (see chart for specific part number)

⁵

⁶ Available as a Sub-Assembly: SF5171/2

ADDITIONAL INFORMATION (AI):

A1 Service Manual NDS **613513**

A2 Lubrication Manual **613511**

Item	Part Number	Description	Type	Torque (N-m)	Torque (ft.-lbs)
1	N/A				
4	F5064/55	Flanged bolt	M14 x 1,5	236 - 260	174 - 192
6	F5169/77	Hub Bearing – Nut	M42 x 2	700 - 770	516 - 568
	F4567/77	Hub Bearing – Nut	1 3/4" - 8 UN	780 - 849	575 - 626
10	833031	Bolt	M12 x 1,75	117 - 132	86 - 97
17	971370	Kingpin – Cap	2,375" - 16 UN	88 - 108	65 - 80
19	MX-1-1601	Nut – Self Lock	M16 x 1,5	180 - 210	133 - 155
22	833175	Brake fixing – Bolt	M20 x 1,5	475 - 533	350 - 393
30	ML6020/50X	Top steering lever – Bolt	M20 x 2,5	705 - 780	520 - 575
33	ML6020/65X	Bottom steering lever – Bolt	M20 x 2,5	705 - 780	520 - 575
34	ML6020/80X	Bottom steering lever – Bolt	M20 x 2,5	705 - 780	520 - 575
37	SL221/6	Draw key – Nut	1/2" - 20 UNF	69 - 84	51 - 62
41	SL221/8	Nut – Stop Bolt	5/8" - 18 UNF	1222 - 163	90 - 120



Dana Holding Corporation

Commercial Vehicle Products – Europe

Dana Automoción S.A.

Polígono Industrial de Landaben, Calle E

31012 Pamplona / Spain

TEL (+34-948) 289 100 FAX (+34-948) 188 164

APPLICATION POLICY

Capability ratings, features and specifications vary depending upon the model type of service. Applications approvals must be obtained from Commercial Vehicle Products - Europe. We reserve the right to change or modify our product specifications, configurations, or dimensions at any time without notice.

People Finding A Better Way[®]