



DA0122001

AXIP-0075 SUPPLEMENT

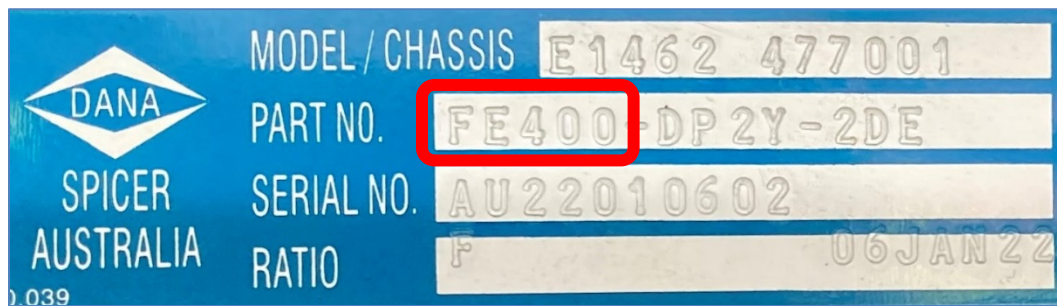
DATE: 11/01/2022

For Steer Axle Models: E-Series

PART NO (Name tag) to ASSEMBLY PART NO (AXIP-0075)

The 1st part of the PART NO on the axle name tag, (which is attached to the axle) can be cross referenced to an ASSEMBLY PART NO which is in the Illustrated Parts List.

See the table on the next page.



Illustrated Parts List

AXIP-0075

May 2013

E-1000I, E-1002I, E-1000W,
E-1200I, E1201W, E-1202I, E1202W, E-1203I
E-1320I, E-1320W, E-1322I, E-1322W
E-1460I, E-1460W, E-1462I, E1462W

ASSEMBLY PART NO.	I-BEAM	KNUCKLE ASSY LH ASSY RH	TIE ROD ASSY	STOP SCREW LH / RH	FRONT STEER SPINDLE NUT	TURN ANGLE LH / RH
1462BN100-140 RH STEER	971997	972778 972804	817755	816367 816367	1.50-18 UNEF-2A THD	41°-45° 41°-45°



PART NO. (Axle name tag)	ASSEMBLY PART NO. (AXIP-0075)
FC400	1322BN103-49
FC500	1322BN103-50
FC5R0	
FC600	1322BN103-65
FC6R0	
FC700	1322BN103-63
FC7R0	
FC800	1322BN103-62
FC900	1322BN103-64
FC9R0	
FE100	1462BN100-137
FE200	1462BN100-138
FE300	1462BN100-139
FE400	1462BN100-140
FE4R0	
FE5R0	1462BN100-141
FE600	1462BN100-142
FE700	1462BN100-143
FE800	1462BN100-144
FE900	1462BN100-145
FE1000	1462BN100-146
FE10R0	
FE1100	1462BN100-147
FE11R0	
FE1400	1462BN100-131
FE1500	1462BN100-70
FE15R0	

If you have any questions, please call Dana Australia on **1300 003 262** or e-mail aus.spicer@dana.com for more information.

This Document is on: www.dana.com.au