

### AXLE TECH BULLETIN

DATE: 04/04/2022

For Axle Models: 170/190/590 Tri Drive ONLY

## Power Divider Lock-Out on the 1<sup>st</sup> axle

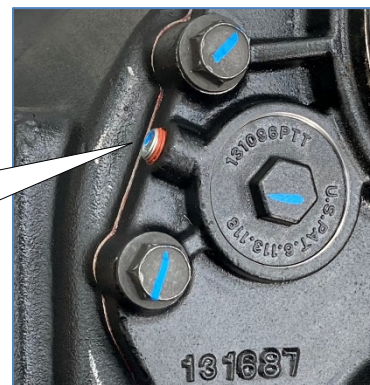
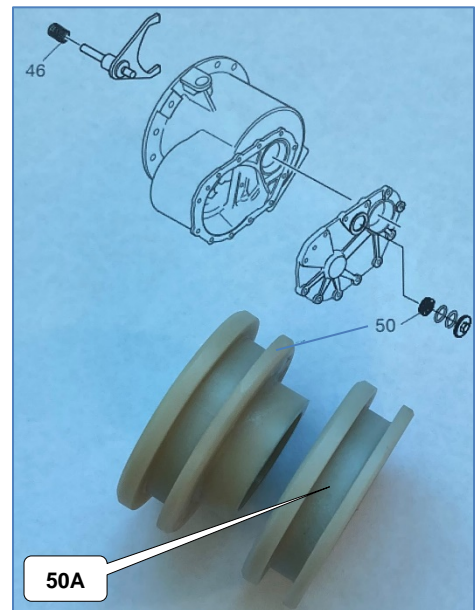
In the Dana Tri Drive Axle combination, the 1<sup>st</sup> axle (only) is fitted with a **locked power divider**.

To lock the power divider into the engaged position, an addition spacer is fitted in front of the piston.

**Item 50A:** 131232-MOD is the spacer fitted **additionally** to hold the piston in the engaged position.

Item 50: 131232 Piston

**Note:** Item 46 (Spring 129859) is not fitted in a locked power divider.



**Note:**  
The air supply hole to the piston is plugged.  
No air supply is required.

The item numbers above, are the same as they are in the Illustrated Parts List: **AXIP-0057** for these axle models.

For service information use the **Service Manual AXSM-0057**.

If you have any questions, please call Dana Australia on **1300 003 262** or e-mail [aus.spicer@dana.com](mailto:aus.spicer@dana.com) for more information.