

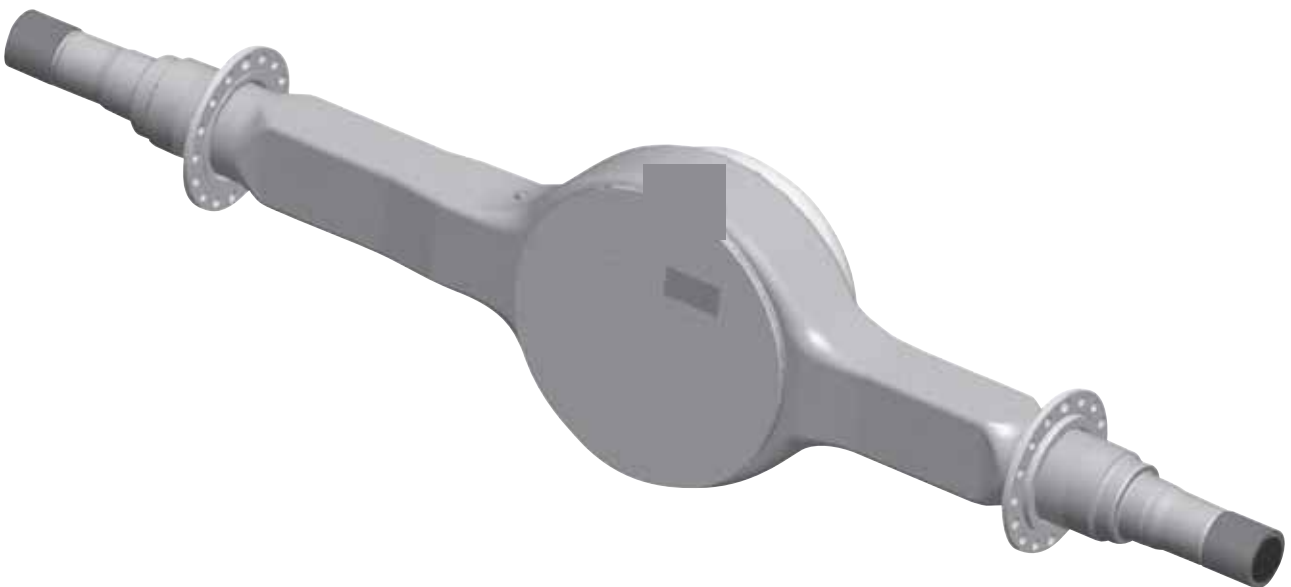
**DANA**

# Spicer® Tag Axle

R22BS  
22,000 lbs. [9,979 kg]

## The Spicer® Tag Axle

- Standard "R" Series spindles for common fitment
- Standard housing bowl and box size
- Weighs only 116 kg
- Sealed standard housing
- Uses common torque rod brackets and axle seats
- 9,979 kg GAWR



**SPICER®**

Drivetrain Products

**Dana Australia Pty Ltd**  
39-45 Wedgewood Road  
Hallam, VIC 3803 Australia

[www.dana.com.au](http://www.dana.com.au)

**SPICER**<sup>®</sup>  
*Drivetrain Products*