

DANA

Spicer® Integral Arm Steer Axles

E-1322I
E-1462I
E-1462W
(6,000 kg - 6,636 kg)

Steer axles with
forged steel Integral
Arm knuckles and
standard or deep drop
extra-capacity beams.

The unique dual-drawkey and spring washer kingpin retention system along with a robust beam forging design provides improved total vehicle alignment capability and axle durability.

The flexibility of the Integral Arm forged knuckle and the family of beam widths and drops available maximises vehicle performance in a wide variety of applications by reducing weight and increasing steering cut.



FEATURES

Integral Arm Knuckle – Exclusive one-piece forging design including the steer arm, tie rod arm, and spindle.*

Dual-Drawkey Kingpin Retention – Same-side location with spring washer tensioning and a widened and more rigid beam kingpin boss.*

Kingpin joint sealed thrust bearings and compressible kingpin inserts.*

Standard and Wide Beam Widths.

Standard and Deep Beam Spring Pad Drops.

Options – 1-1/2 12 UNF D-Flat spindle threads and 30-50° stop screw assembly.

BENEFITS

Forged knuckle reliability for up to 55° turn angle and lightweight.**

Improved durability and alignment capability, along with reduced maintenance in a compact package.

Improved durability and reduced maintenance.

Maximum manoeuvrability.

Standard or lowered chassis suspension fit-up.

Compatibility with varying OEM design and assembly requirements.

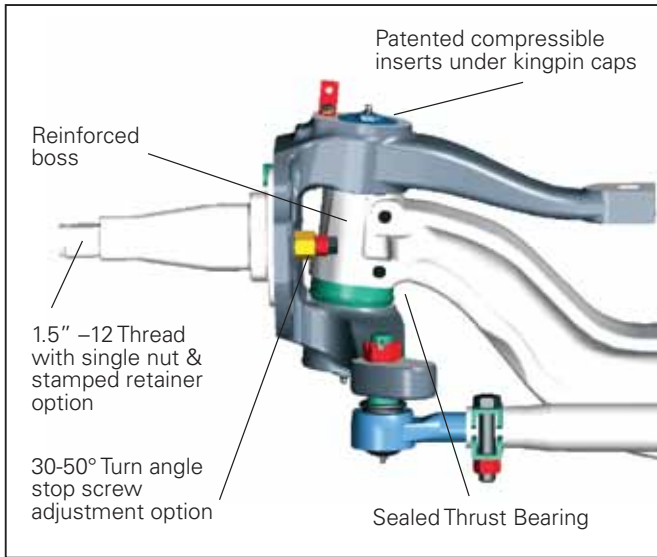
*Patented or Patent Pending Features
**1462I & 1462W Max Turn Angle Capability 50°

SPICER®

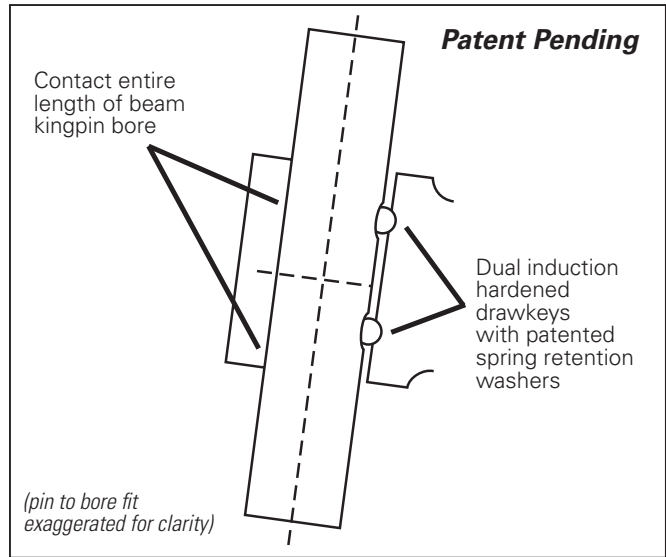
Drivetrain Products

Spicer® Integral Arm Steer Axles

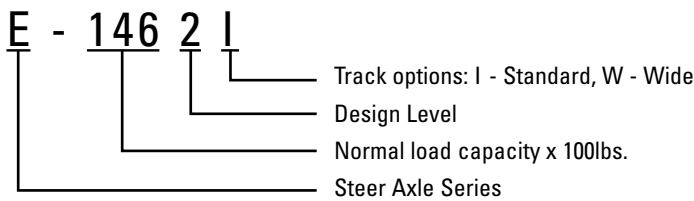
Features and Options:



Maximum Contact Kingpin Joint:



Model Nomenclature:



Specifications:

MODEL	GAWR	KINGPIN INTERSECTION	SPRING PAD DROP	CENTER DROP	AXLE WEIGHT
E-1322I	6,000kg	1,753mm	88.9mm	21.8mm	158kg
	6,000kg	1,753mm	127mm	21.8mm	164kg
E-1462I	6,622kg	1,753mm	88.9mm	21.8mm	159kg
	6,622kg	1,753mm	127mm	21.8mm	168kg
E-1462W	6,622kg	1,803mm	88.9mm	21.8mm	161kg
	6,622kg	1,803mm	127mm	21.8mm	171kg
	6,622kg	1,816mm	95mm	21.8mm	161kg

For spec'ing or service assistance, call (03) 9213-5555 or visit our website at www.dana.com.au

Dana Australia Pty Ltd
39-45 Wedgewood Road
Hallam, VIC 3803 Australia

www.dana.com.au

SPICER®
Drivetrain Products